

Hoyeon Chung



Time_ Matter, Image, recollection

1.

Having majored metal craft, Hoyeon Chung's work from mid-1990's through mid-2000's focused on metal craft. During this time period, her metal work aimed to portray the relationships & coexistence among humans through organic usage of both straight lines & curvatures. She derived satisfaction from modifying heavy & solid metal through application of heat & force, while deeply enjoying the process of designing & completing her work according to a thoroughly thought out workplan. After a decade of dedicated metal craft work, starting mid-2000's, her artistic focus shifted – her work began to focus more on softer & lighter material, with freer & more creative craft process.

2.

Hoyeon Chung's initial choice of material during the transition period were threads & burlap. Traditionally used to make ceremonial clothes, burlap is both soft yet strong, allowing for easier manipulation of shapes. Still focused on relationship among humans as an artistic theme, the artist continued to partake in a freer & more spontaneous creation process by using her past relationships as sources of inspiration. She showed her creativity during this time by using stiffened burlap (using glue) as skeleton & overlaying it with bark, plastic, metal, rubber & even silicon. Created everyday as if she was writing a journal entry, each work was titled using a person's initials & numbers.

First displayed during her solo exhibition in 2011, the burlap work eventually evolved into paper & aluminum screen post-2013. Her work during this time involved wrapping aluminum screen around paper that has been colored & lined using oil pastel, resulting in light, yet three-dimensional pieces of work with a variety of colors.

3.

The process of portraying the emotions felt while keeping in mind a specific target is completed through the cognition of the artist. During this process, according to French philosopher Henri-Louis Bergson (1859-1941), the target remains in the mind of the artist in the form of an image. To the artist, the image becomes a symbol that distills his or her material experiences.

Post-2014, Hoyeon Chung began to focus on image as a medium between material & symbol – while exploring the use of semi-transparent materials. While images can be expressed using a single material, the artist decided to utilize multiple materials & components such as semi-transparent oil paper & dyed leather to portray the image in her mind. The completed work mimics the complexity of water painting and was further enhanced by freely drawn ink lines & intentional burn marks throughout the paper materials.

4.

Hoyeon Chung's continued artistic focus expanded her inspiration from images to memories. Memory is the process of storing, replaying & recreating a specific target or experience in one's head. Thus, memory serves as a bridge that connects one's cognitions of past & present, using continuation of time as its backdrop.

To portray the process of recalling & recreating a past experience from the present, the artist chose goat leather as her main material, due to its strength & permeability. Starting in 2015, the artist aimed to symbolize her thoughts on memory by bring the natural texture of goat skin to life via coloration. She added further complexity to her work via additional textures & materials, while adding three-dimensionality by applying heat, which curls up the leather. Permeability of the leather allows air to flow through different layers of her work, adding additional sense of space & volume.

This sense of permeability is best exemplified by the artist's work starting in 2018, when she began utilizing polyester, which boasts one of the highest permeability among available materials, making it an ideal choice for layering & adding a sense of volume. The artist made use of this permeable fabric by cutting it into circles & adding brushstrokes going from outer circle towards the center. Each brushstroke is comprised of different color density & speed, representing the uniqueness of emotions that the artist felt on different days. This was then combined with other materials of different sizes & shapes, culminating in the artist's series, "Time_s". Detailed depiction & overall composition bring tension to the work & symbolize the artist's cognitive processing of her memory – constant replaying & recreation of the past.

5.

Hoyeon Chung's work started with human-to-human relationships and has matured into capturing the process of recording & replaying the memories of said relationships. With the backdrop of continuous nature of time, her series of work has evolved from usage of vibrant colors & solid materials to that of much softer materials with pastel toned colors, while deeply studying how each material affects the overall visual composition. Each work has been a result of harmony between form & content, stemming from the diligent work the artist has put in everyday over a long time period.

Founded on deep curiosity of different materials & themes such as image & memory, the artist's work will continue to evolve in the future.

Curator Oh, Gayoung

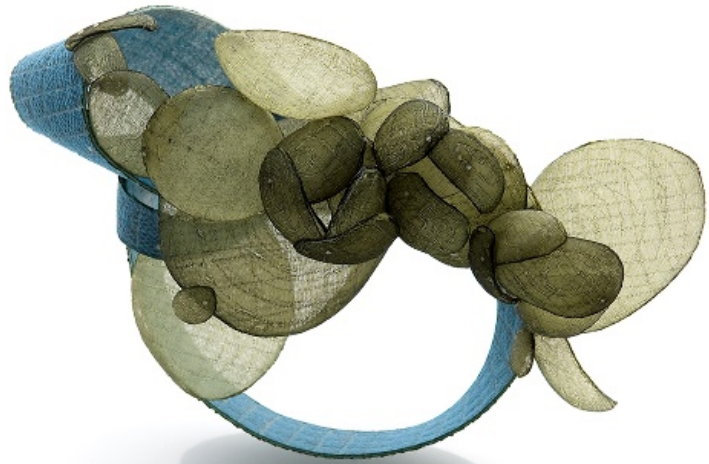
Times 2020



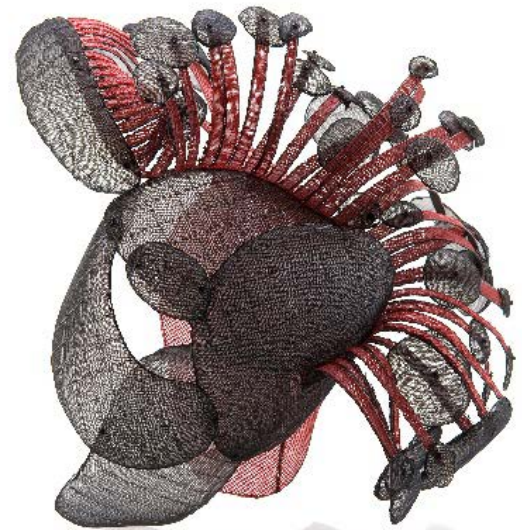
Time • Mixed Media, 8.8x8.8x1.2cm



Time • Mixed Media, 8.8x8.8x1.2cm



Time • Mixed Media, 8.8x8.8x1.2cm





Time • Mixed Media, 8.8x8.8x1.2cm

Times 2018



Time • Mixed Media, 8.8x8.8x1.2cm



Time • Mixed Media, 8.8x8.8x1.2cm



Time • Mixed Media, 8.8x8.8x1.2cm



Time • Mixed Media, 8.8x8.8x1.2cm



Time • Mixed Media, 8.8x8.8x1.2cm

T i m e

Time • Mixed Media, 12x9x2.3cm



Time • Mixed Media, 12x9x2.3cm



Time • Mixed Media, 11x10x2.5cm



Time • Mixed Media, 8.8x8.8x1.2cm



Time • Mixed Media, 8.5x8.5x1.2cm



Time • Cotton Cloth, 5.5x12x2cm



Time • Mixed Media, 9x9x1.3cm



Time • Mixed Media, 8.5x8.8x1.2cm



Time • Mixed Media, 9.2x8.7x1.2cm

Time • Mixed Media, 7.5x10x2.5cm





Time • Mixed Media, 9.5x8x2.5cm

Beige Figure • Cotton Cloth, 9.5x8x3cm





Time • Mixed Media, 8.5x7x3.5cm



Time • Mixed Media, 8.5x8x3.5cm



Time • Mixed Media, 7.5x7x3.5cm

Once upon a time



Self Portrait
• Rawhide, Dye, 7x8x1cm



Mother
• Rawhide, Dye, 7x11x2cm



Self Portrait
• Rawhide, Dye, 7x8x1cm



Self Portrait
• Rawhide, Dye, 7x8x1cm



Time • Mixed Media, 8.8x8.8x1.2cm

Yellow Defence • Rawhide, Dye, 6x8x3cm



Blue Reaction • Rawhide, Dye, 3x14x2cm



Self Defence • Rawhide, Dye, 7x10x2cm



The Day • Rawhide, Dye, 8x10x2cm





Brooch rawhide, goatskin, wood, wire, 70x70x20mm



Brooch rawhide, goatskin, wood, wire, 45x65x15mm



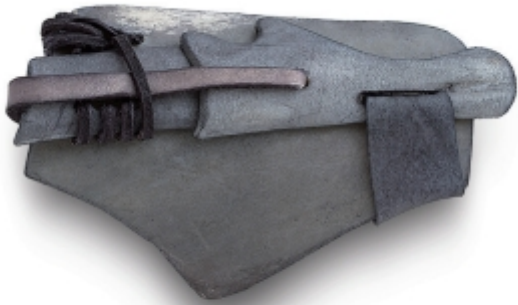
Brooch rawhide, goatskin, wood, wire, 45x65x15mm



Brooch rawhide, goatskin, wood, wire, 45x65x15mm



Brooch rawhide, goatskin, wood, wire, 45x65x15mm



Shield • Rawhide, Dye, 8x12x2.5cm



Message from Theme • Rawhide, Dye, 8x12x3cm



Dog • Rawhide, Dye, 9x11x3cm



Dog • Rawhide, Dye, 9x11x3cm



Dog • Rawhide, Dye, 9x11x3cm



Pink Sense • Cotton Cloth, 6x14x3cm



Beige Figure • Cotton Cloth, 5.5x12x2cm

Blue Figure • Cotton Cloth, 5.5x16x2cm



3 6 5



365 days • 8x9x2cm, mixed media, 2014



365 days • 4x7x2cm, mixed media, 2014



365 days • 4.5x8x3cm, mixed media, 2014



365 days • 6x8x3cm, mixed media, 2014



365 days • 5.5x8x2.2cm, mixed media, 2014



365 days • 4.5x8x3cm, mixed media, 2014



Story





Tie • 4x7x2cm, mixed media, 2013



Tie • 8x8x2.3cm, mixed media, 2013



Tie • 4.5x8x3cm, mixed media, 2013



Tie • 5.5x9x2.2cm, mixed media, 2013



Tie • 4x9x2cm, mixed media, 2013



Trace 2 • 5x7x3cm, mixed media, 2013



Trace 2 • 5x8x2.5cm, mixed media, 2013

b e t w i x t



Betwixt • Untitled • 12x9x3cm, mixed media



Betwixt • Untitled • 7x7.5x2.5cm, mixed media



Betwixt • Untitled • 11x5x1.8cm, mixed media



Betwixt • Untitled • 7x15x5cm, mixed media



Betwixt • Untitled • 12x9x3cm, mixed media



Betwixt • Untitled • 7x15x5cm, mixed media

picnic 11 • 5x4.5x3.5cm, mixed media



picnic 09 • 2.5x6.5x2cm, mixed media



picnic 07 • 5.5x3.5x2.5cm, mixed media



picnic 05 • 3.5x5.5x2cm, mixed media



picnic 03 • 5.5x3.5x2.5cm, mixed media



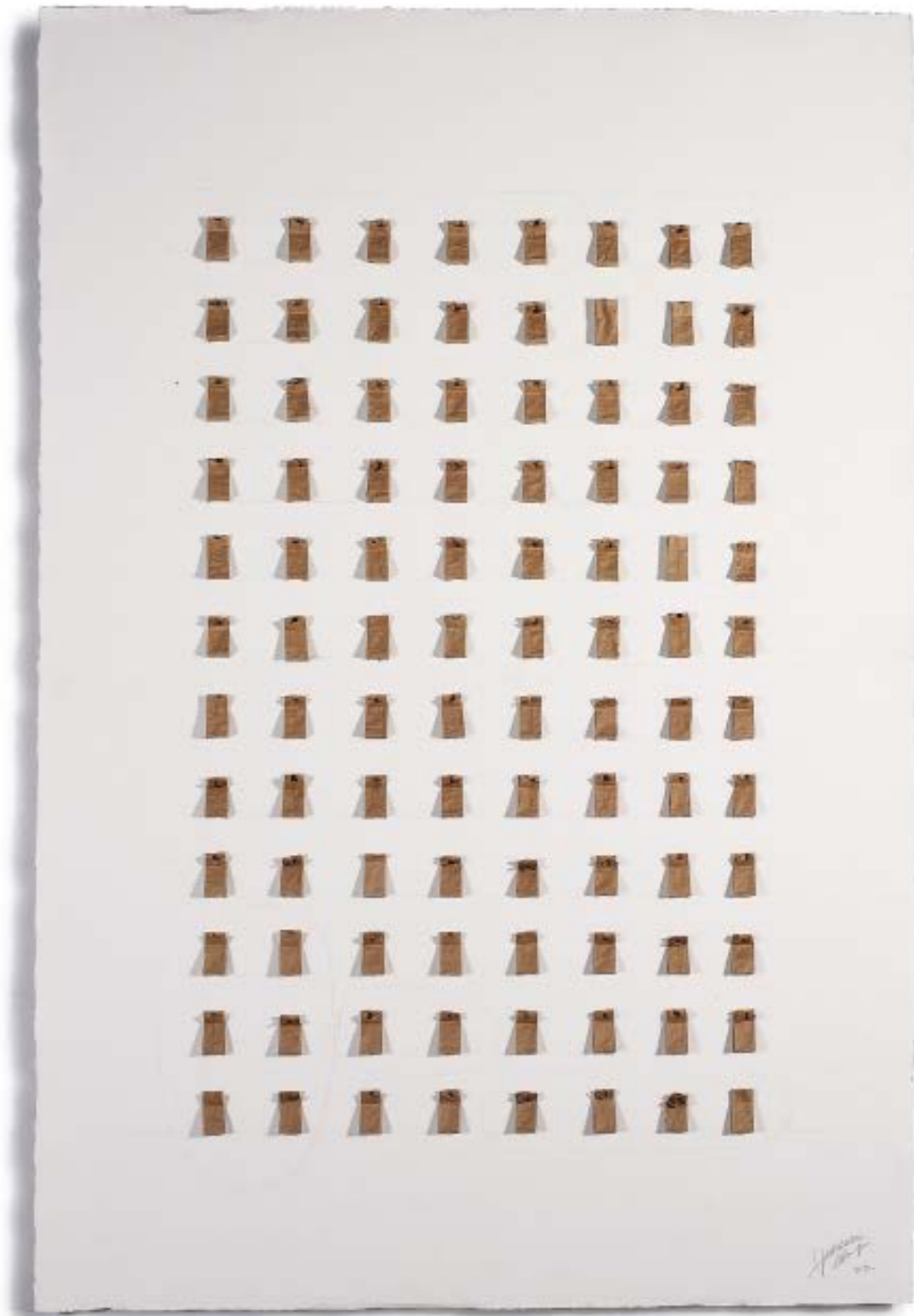
picnic 01 • 5.5x3.5x2.5cm, mixed media





Stick + • mixed media, 65x50cm, 2012

[Handwritten signature]
2012



- days • mixed media, 120x180cm, 2012

+ 7days • mixed media, 120x180cm, 2012





P+T1 • mixed media, 4x12x4cm / 1.5x15x1cm / 3x16.5x2cm / 7x15x2.5cm / 3x12.5x3cm / 4x13x2cm, 2011

[O]



grandma1 • mixed media, 10x14x4cm, 2011



grandma2 • mixed media, 9.5x16x3.8cm, 2011



Leaf 01 • mixed media, 5x10x3cm, 2011



Leaf 02 • mixed media, 6x11x2.4cm, 2011



Leaf 03 • mixed media, 5.5x12x2cm, 2011



brooch • mixed media, 10x15x6cm, 2011

brooch • mixed media, 7x16x6cm, 2011



Hoyeon Chung

Education

2020 • Hong Ik University Metal art & Design Ph.D.

1999 • Rochester Institute of Technology Metal & Jewelry, MFA

1996 • Hong Ik University Metal & Jewelry, MFA

1993 • Hong Ik University Metal & jewelry, BFA

Solo Exhibition

2019 Time, Hong Ik Museum of Art, Seoul, Korea

2019 Time, Mid Career Invitation Exhibition, KCDF Gallery, Seoul, Korea

2018 Time_s, Gallery Toast, Seoul, Korea

2016 • 'Time' - chairs on the craft, Seoul (Dec. 12, 2016 ~ Jan. 13, 2017)

2016 • Art Seoul 2016 - Hangaram Art Museum, Seoul Art Center (Oct. 08 ~ Oct. 13)

2015 • Art Seoul 2015 - Hangaram Art Museum, Seoul Art Center (Nov. 05 ~ Nov. 11)

2015 • Earlham College, Leeds Gallery (Oct. 26 ~ Nov. 20)

2015 • Once Upon a Time - space duru (Apr. 15 ~ Apr 21)

2014 • Art Seoul 2014 - Hangaram Art Museum, Seoul Art Center (Oct. 28 ~ Nov. 2)

2014 • '365' - gallery VOGOZE, Seoul, Korea (Feb. 27 ~ Mar. 5)

2014 • 'Story of Us' - The University Museum, Southern Illinois Univ., IL (Jan. 21 ~ Mar. 7)

2013 • betwixt - gallery Toast , Seoul, Korea (Mar. 7 ~ 4)

2012 • "(+ -)" - Kobang, Seoul, Korea (Jun. 16 ~ 22)

2011 • [O] - Gallery Noam, Seoul, Korea (Nov. 2 ~ 8)

Group Exhibition

2020 Tradition & Design Cooperation Project, Craft Trend Fair, COEX, Seoul, Korea

2020 Korean Contemporary Jewelry Chronicle 100 Brooches, Sueneo, Seoul, Korea

2020 Onaments, Yeol, Seoul, Korea

2020 Oh, My Object, Gallery Meme, Seoul, Korea

2020 International Handwerksmesse 2020, Munich, German

Award & Experience

2007 - present • HoyeonChung Studio, IL

2010 - 2011 • Instructor at Hong-Ik Univ., Dong-Duk women's Univ.,
Seoul National Univ. of Technology, Seoul

2002 - 2004 • Artist Residence-Rochester Institute of Technology, NY

2001 • Outdoor Clock- Jewish Community Center Rochester, NY

2001 • Metal furniture fabricator -Bella Design, East Rochester, NY

2000 • Jewish Community Center Rochester, NY

2000 • Outdoor Clack competition, 1st place

1999 - 2000 • Bench Jeweler-Barbara Heinrich Studio, LLC, NY

1996 • Korea Crafts Award, Special Prize

1995 • Instructor at Won-Kuang University, Ik-San, Korea

1995 • Commission work for 'Paris Collection" (Fashion Designer, Ann Pigaro)

Collection

• Wallace Library, Rochester Institute of Technology, NY

National Museum of Modern and Contemporary Art, Seoul, 2019

Victoria & Albert Museum, London, UK, 2019

Seoul National University Hospital, Seoul, 2018

Publication

Ludvig Rage"- Ludvigrageclub, Berlin, Germany, 2020

• "500 Silver Jewelry "- Lark Books, 2010

• "500 Plastic Jewelry "- Lark Books, 2009

• "Paper Jewelry "-Salukee, UK, 2010

• Members of Hong-Ik Metal-Artist Association, The 3rd Group of Metalsmith

