



Lee Hyun Jung



Lee Hyun Jung

- 1974 Born in Dae-Gu, KR
- 2017 PHD Hongik University(Seoul, KR)
- 1998 MFA Hongik University(Seoul, KR)
- 1996 BFA Hongik University(Seoul, KR)
- 2016 Judge of the Grand Art Exhibition of Korean
- 2017- Director, Korean Fine Arts Association
- 2019_ Adjunct Professor, Hongik University
- 2003-2005 Adjunct Professor, Namseoul University
- 1998-2002 Adjunct Professor, Seorabol University

Solo Exhibition

- 2019 Go-Yang Artist 365 Exhibition
- 2016 Blanc Blue Hotel Fair, Ambassador Hotel
Hongik University Graduate School Ph.D., Hongik Museum of Art
- 2015 Minimal&Maximal, Biddle Gallery
ART&DESIGN, Gallery IM
- 2011 Furniture&Flower, Woorim

International Exhibition

- 2017 Habitat Valencia 2017
- 2013 Paris Design Week
- 2010 London Design Festival Designers Block

Invitation exhibition

- 2019 Invited Exhibition of Art Space Hoseo, Art Space Hoseo
- 2018 Contemporary Korean Art Exhibition, Gallery Lambent, Museum of Chosun
Artist Statement #3 Part2, CICA Museum
- 2017 Craft Climax, Gyeonggi Museum of Art
Mass & Matter Art Furniture, Gana Art Center
Aging Aging Wood Furniture Invitation exhibition, Wood Planet
- 2016 Craft Trend Fair theme hall, Coex
Blanc Blue Hotel Fair, Ambassador Hotel
Korea Hyundai Craft Center, Ik-san Arts Center
- 2011 Invited Exhibition of the Palace Museum, The Palace Museum
- 2005 Exhibition of Intelligence, Dan-won Art Museum

Korean Craft Council, Korea Furniture Society, Korea Society of Design Trend,
Korea Society of Basic Design & Art, Korean Fine Arts Association

doctor_lhj
hj9249@naver.com
+82 10.8874.7741



Artist's statement

My new works are traditional shoji windows that divide space in han-ok and outward. Starting from the overlap of open space and space through the open casement window.
It is the result of the examination of the abstraction and the beauty of light.

The han-ok space starts from the open spaces towards the outside through the doors and the windows.
The overlap forms a composite frame and forms a variable landscape and space.

The window moves. Exterior and interior space, existing between interior space and interior space.
It creates a change of space. The geometric abstraction that you feel in a closed window is the movement of the window.
When the light comes in the window, the translucency of the paper.
The abstraction becomes more diverse. white, gray to ochre depending on light conditions produce various colors.
The repetitive bits that the gathers make constitute light. It forms each shadow and its repetition and intersection ceases according to the change of light.
The color of paper changes and is changed by the movement of the shadow.
When the sliding window is opened, the nested space is opened and the window is overlapped do.
The nested window creates a new abstraction and changes its shadows and colors.
The color of the paper containing the light of the paper becomes deeper and creates a new face.
Through the open window, the new space expansion, visual communication, and spatial communication.
The lines are horizontal but often oblique, vertical, but at an angle to each other.
The line is dynamic, static, and the beginning of form and function that leads to diverse eyes.
These thin lines are slightly tilted and are the edges of the planes.
The light is confined or added to the depth, which is not a simple object.
It is some kind of building under construction, and the building will exist only by the action of light.
It captures our gaze and makes it move in and out of it, and the window of Han-ok forms a new space between the open gaps and shapes the oblique lines that are no longer horizontal by perspective.
It makes you reach beyond the frame, just as you crossed the threshold of one space.

The colors laid on the plates are a dynamic,
It often protrudes outwardly as if it were a support for the perspective of a new space
The various colors spread with the line show the changing space are created spontaneously by dividing and overlapping lines and surfaces.
The structure makes us feel a sense of stability and dynamics at the same time.
The plates stand in the form of an open window dismantled from a modern point of view, directional plates extend towards the air and are dynamic, diversity, and transparency.

Art Furniture

Combining The Window of Han-ok
The Abstraction of Light and Color

List of Works

Variation of Color 2019 V1, V2

Maple, Acrylic, Nobang / / 800x400x1080

Variation of Color V3, V4, V5

Maple, Walnut, Oak, Acrylic, Nobang / 400x400x1680

Variation of Color V1, V2

Maple, Acrylic, Nobang / 1000x400x1830

Variation of Color V3, V4, V5

Maple, Acrylic, Nobang / 1600x470x1690

Variation Transparency V1, V2, V3, V4

Acrylic / 1700x600x1800 / 2300x1000x1950 / 1650x500x1500 / 1800x600x1650

Clair de Lune V1, V2, V3, V4

Maple, Walnut, Acrylic, Nobang / 600x50x360

LLL(Layer&Layer&Lee), LHJ Serise

Acrylic, Nobang





Variation of Color 2019 V1, V2, V3, V4, V5



Variation of color 2019 V1
800x400x1080
 maple, nobang, acylic
 2019

Variation of color 2019 V2
800x400x1080
 maple, nobang, acylic
 2019



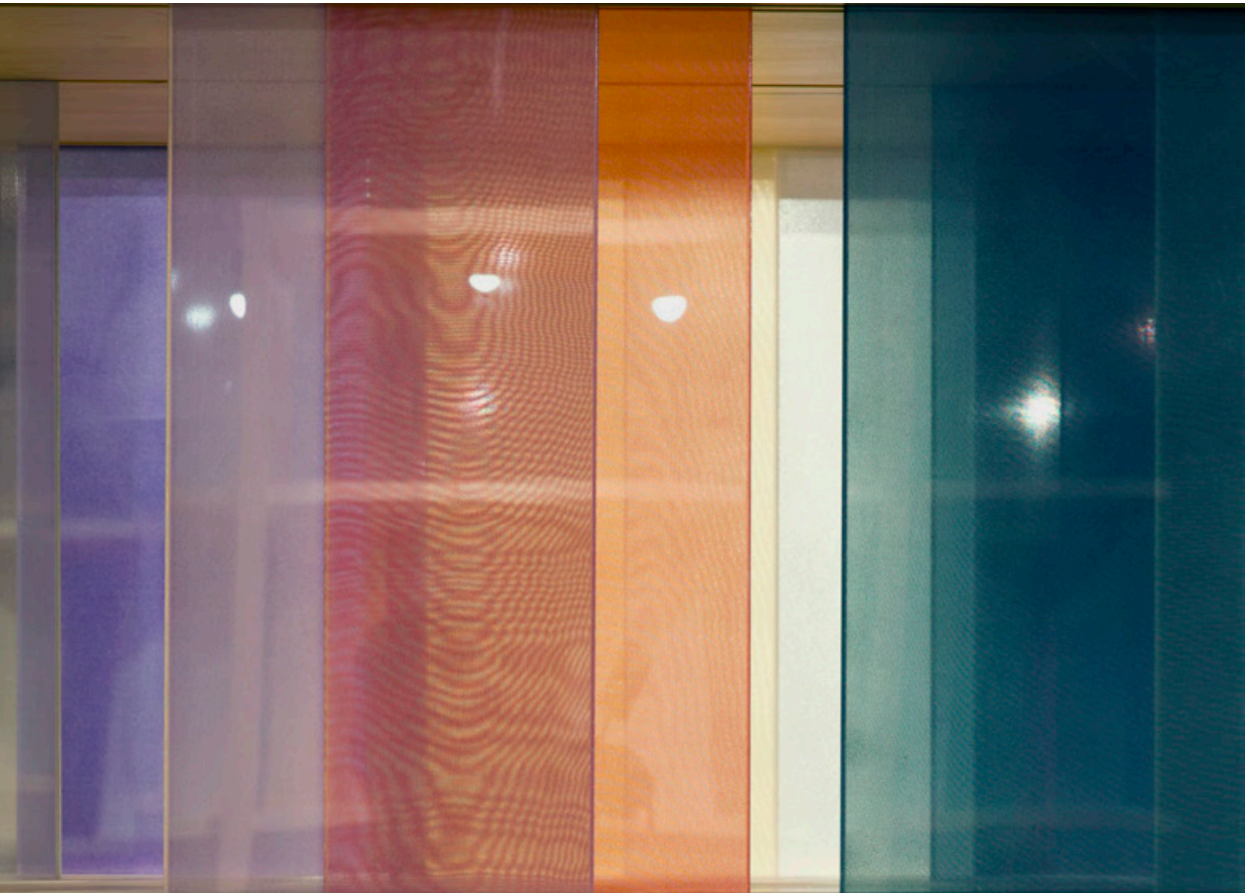
Variation of color 2019 V3
400x400x1680
maple, nobang, acylic
2019



Variation of color 2019 V4
400x400x1680
oak, nobang, acylic
2019



Variation of color 2019 V5
400x400x1680
walnut, nobang, acylic
2019



Variation of Color 2016 V1, V2, V3, V4, V5





Variation of Color V1
1000x400x1830
maple, acrylic, no-bang
2016

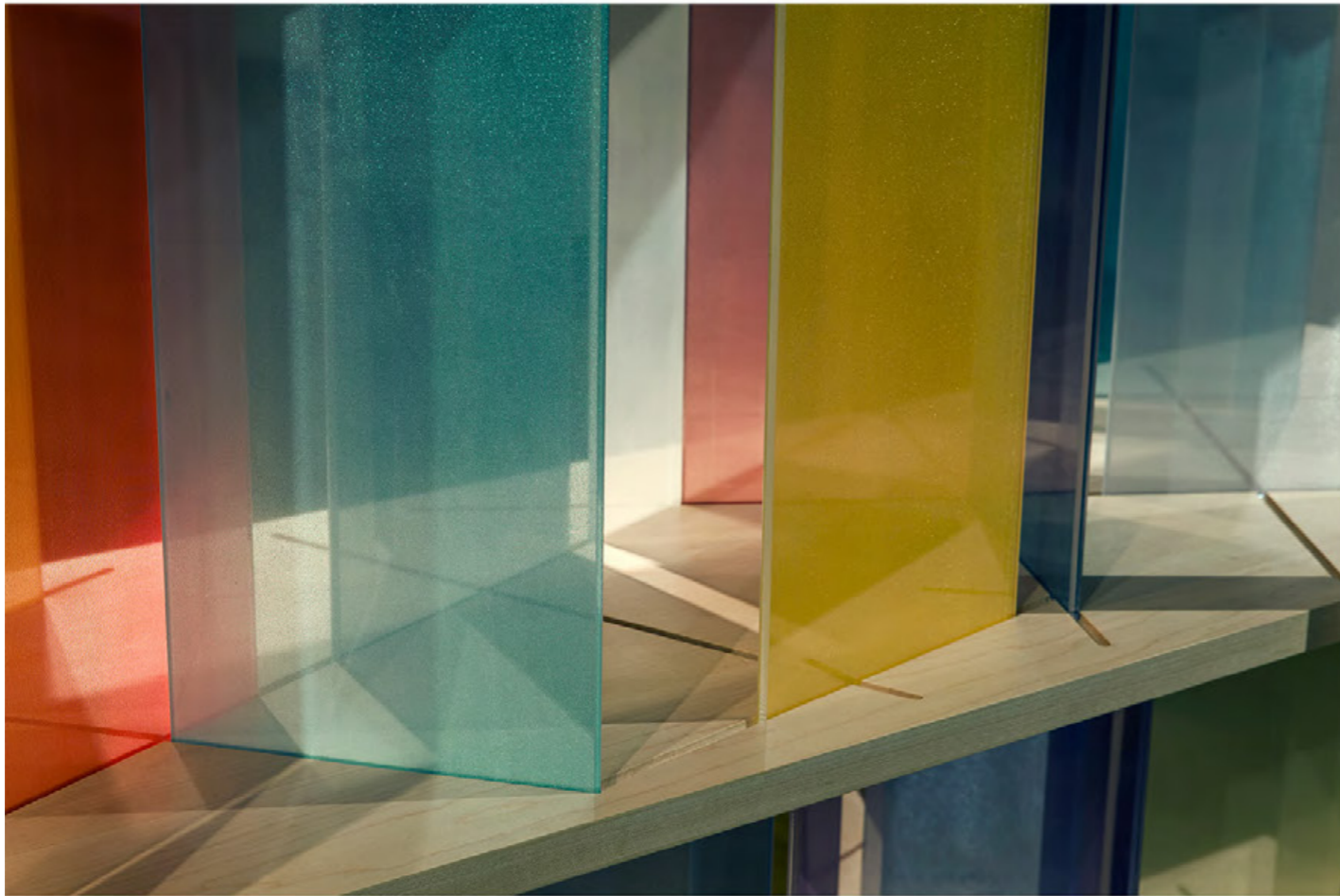


Variation of Color V2
 1000x400x1830
 maple, acrylic, no-bang
 2016





Variation of color 201
1000x400x1830
maple, nobang, acylic
2019



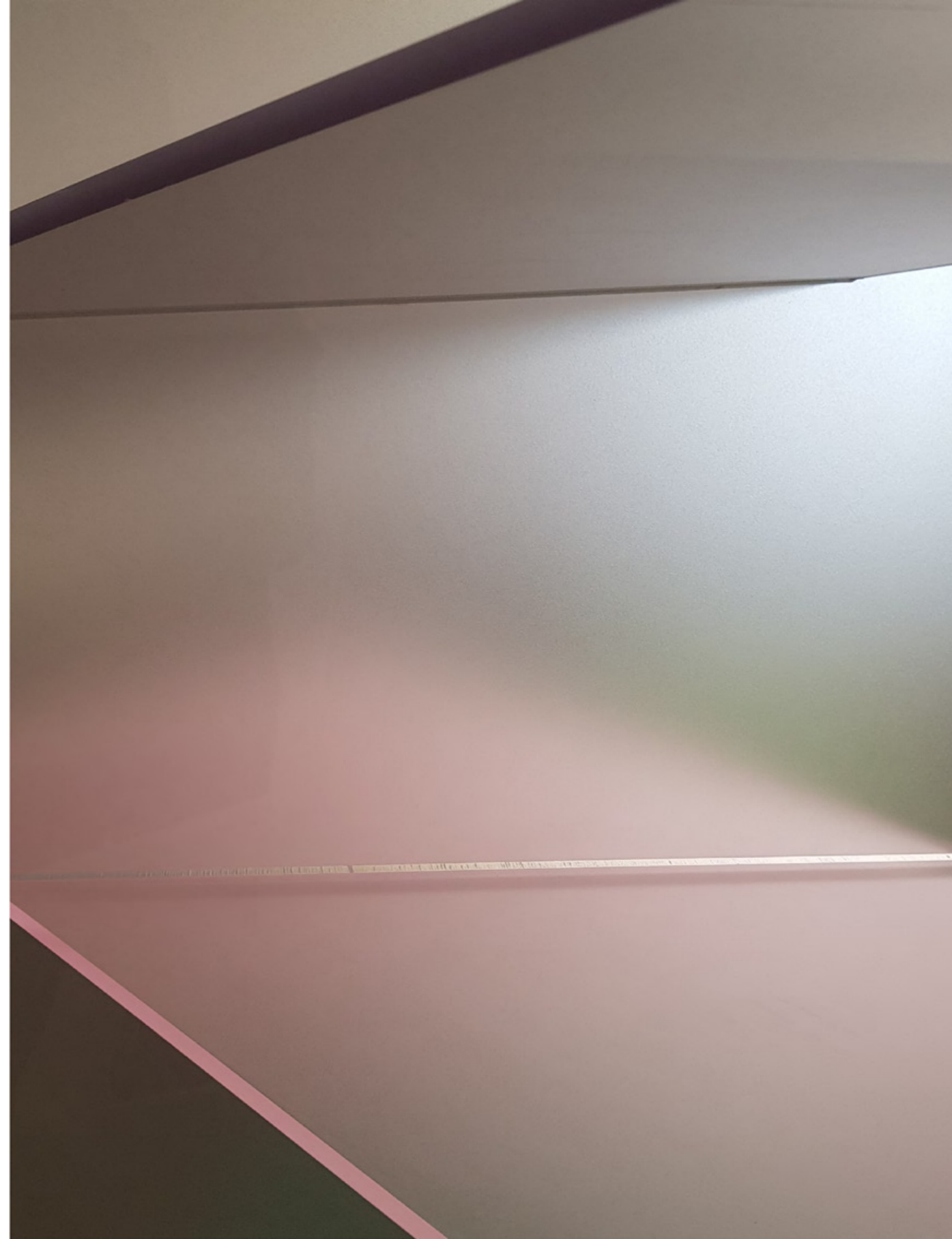
Variation of color 2019 V4
1000x400x1830
maple, nobang, acylic
2019

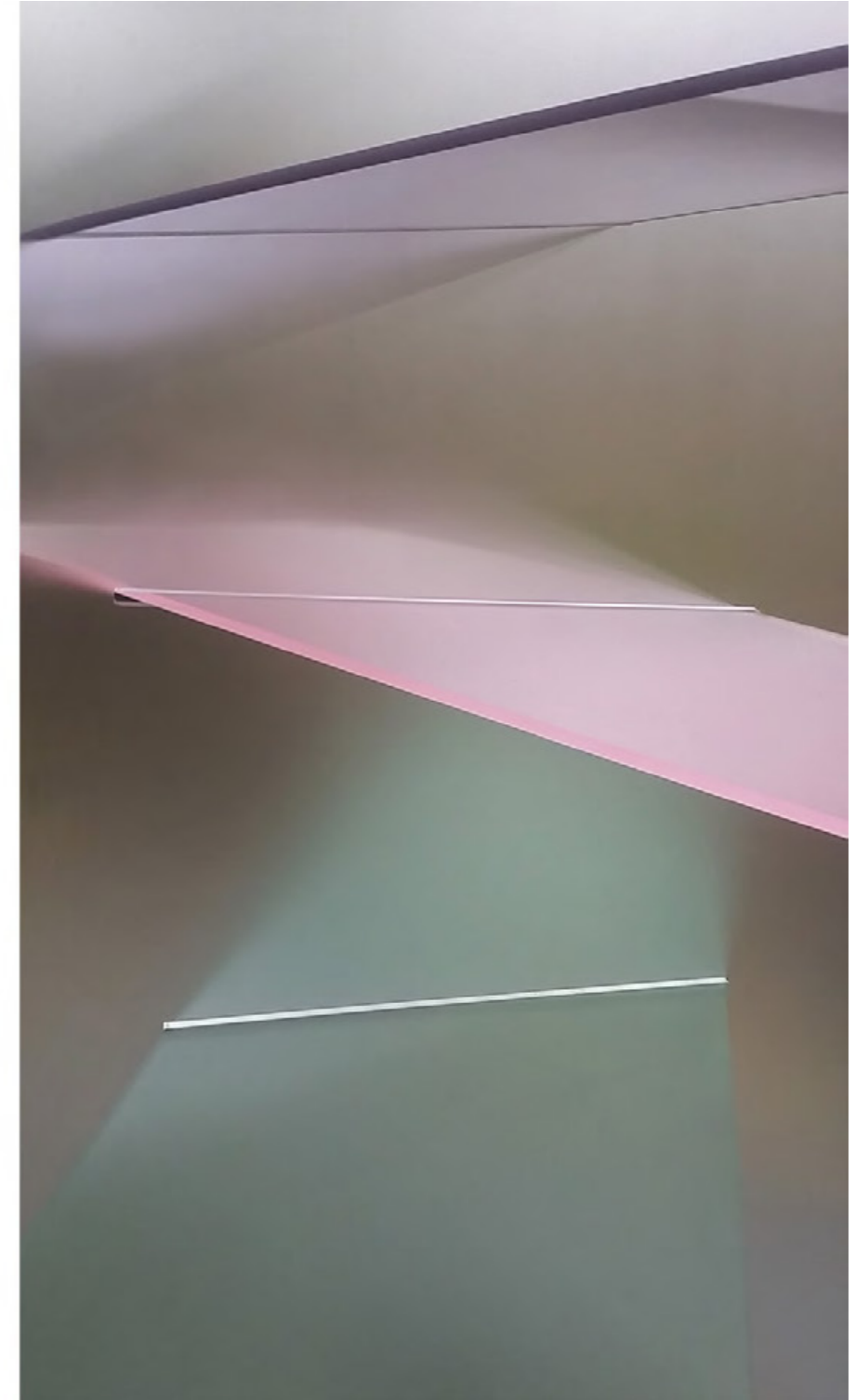




Variation of color 2019 V5
1000x400x1830
maple, nobang, acylic
2019

Variation Transparency V1, V2, V3, V4

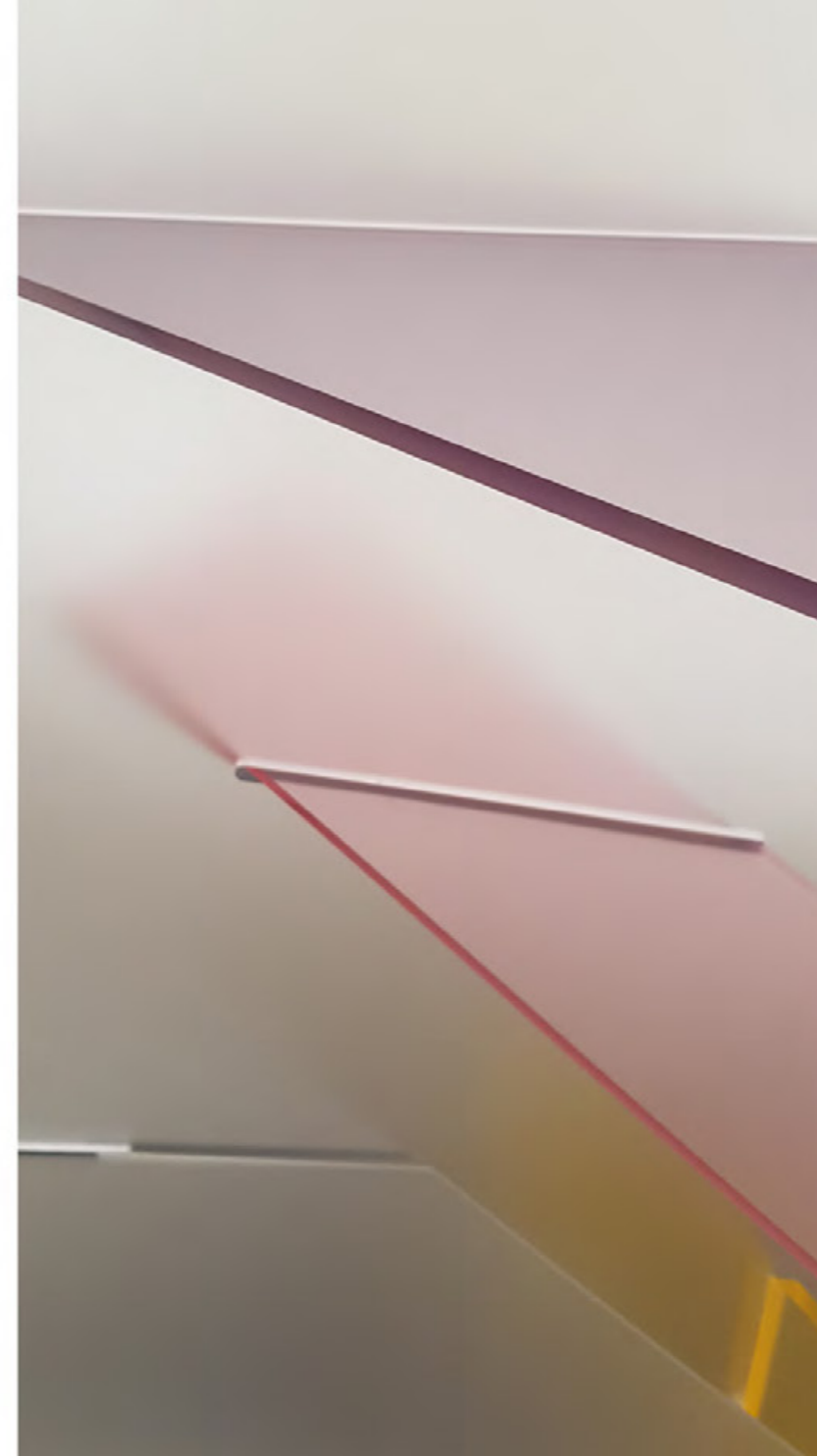




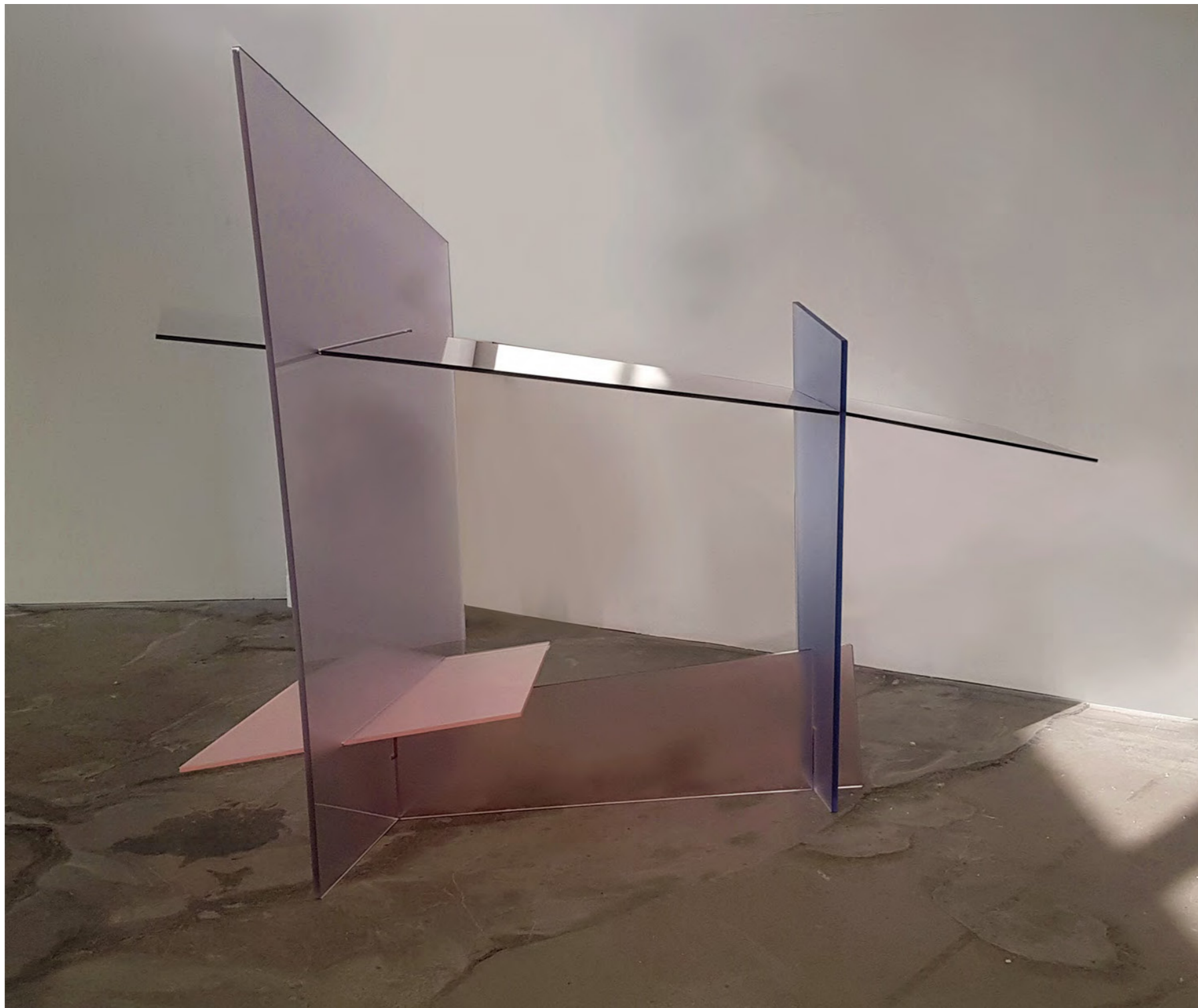
Variation of Transparen
1700x600x1800
acrylic(astel)
2016



Variation of Transparency V2
2300x1000x1950
acrylic(astel)
2016



Variation of Transparency V3
1650x500x1500
acrylic(astel)
2016



Variation of Transparency V4
1800x600x1650
acrylic(aste)l
2016

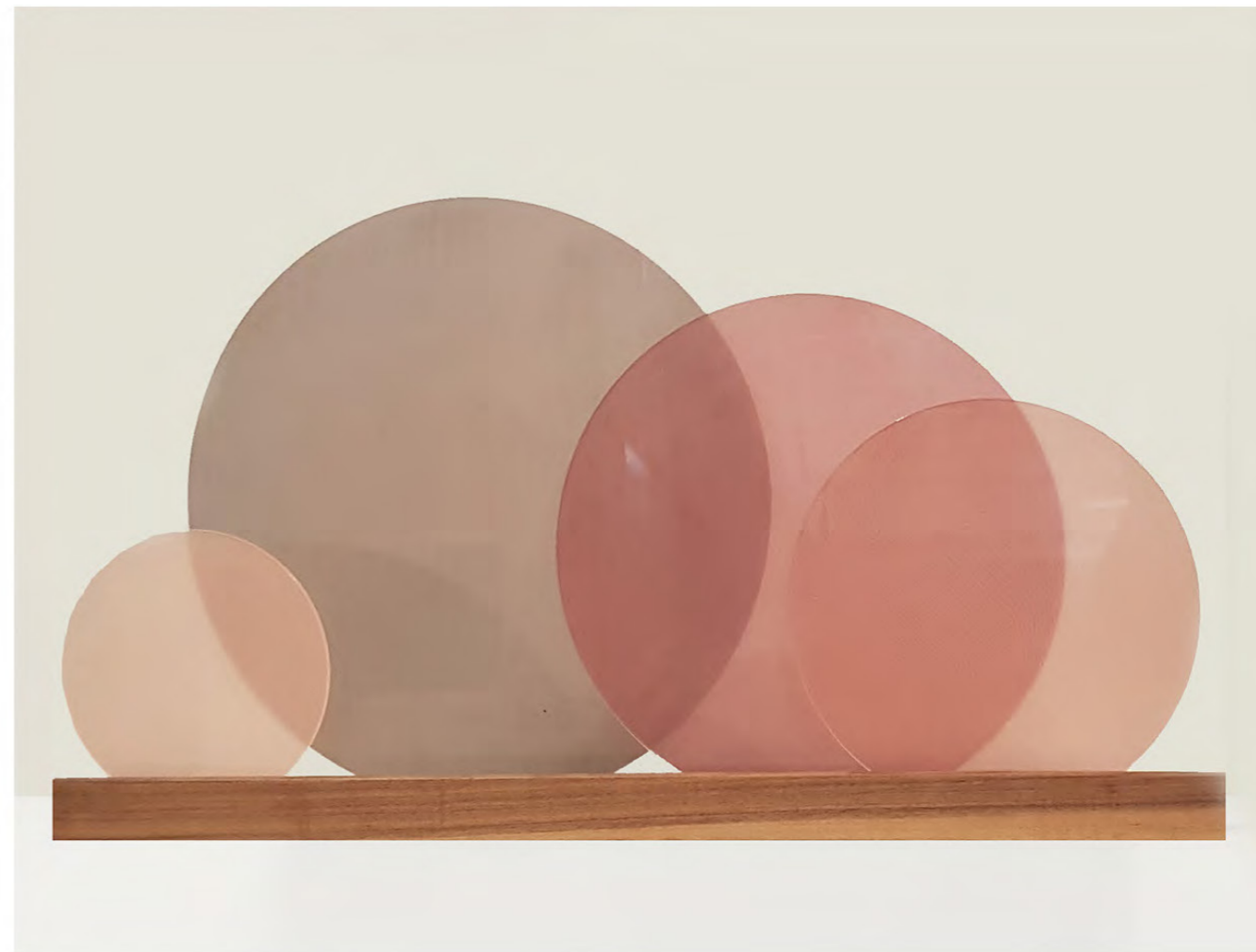


Clair de Lune V1, V2, V3, V4

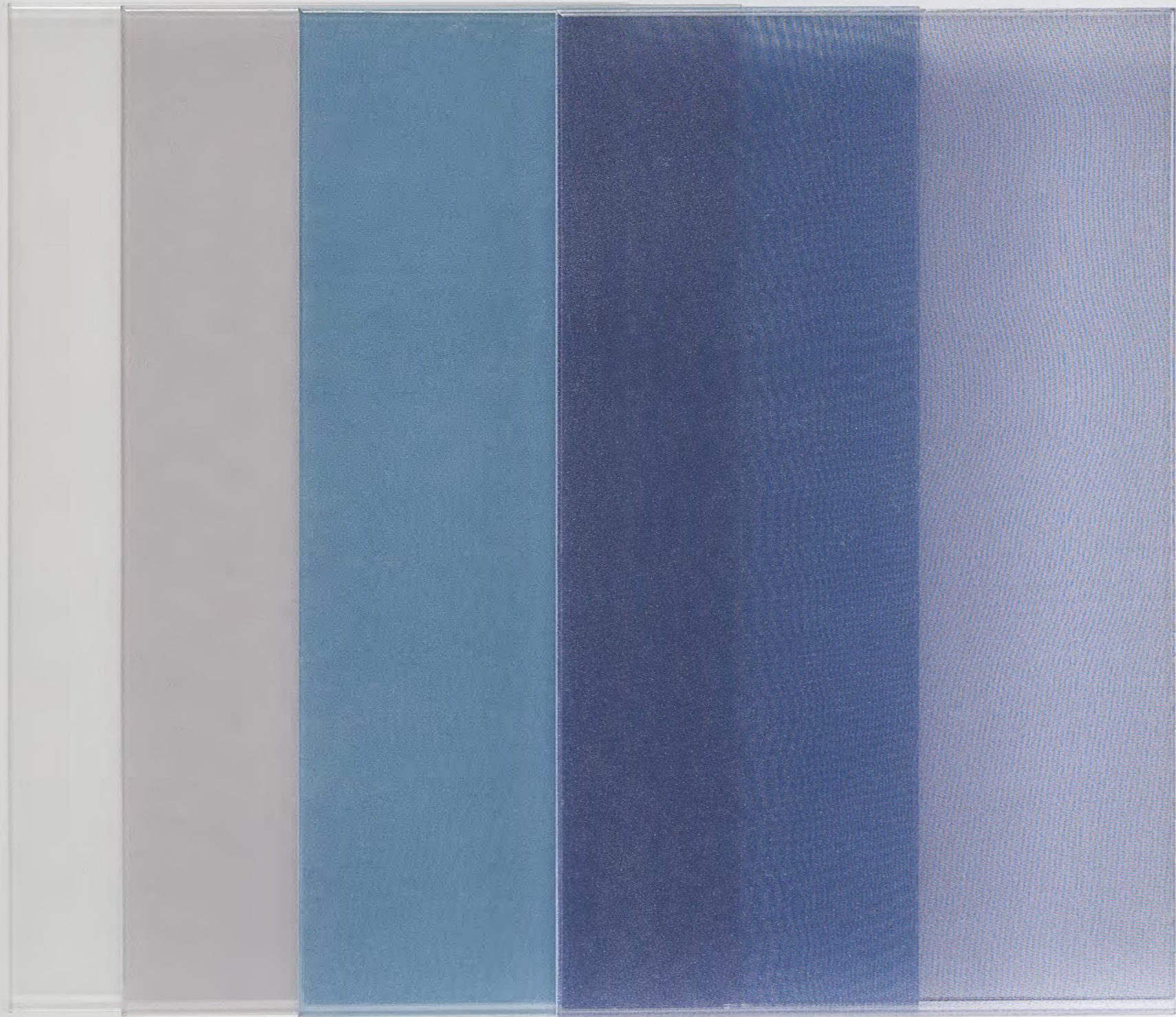
Clair de Lune V3. V4
600x50x360
walnut, nobang, acrylic
2019



Clair de Lune V1
 600x50x360
 walnut, nobang, acylic
 2019



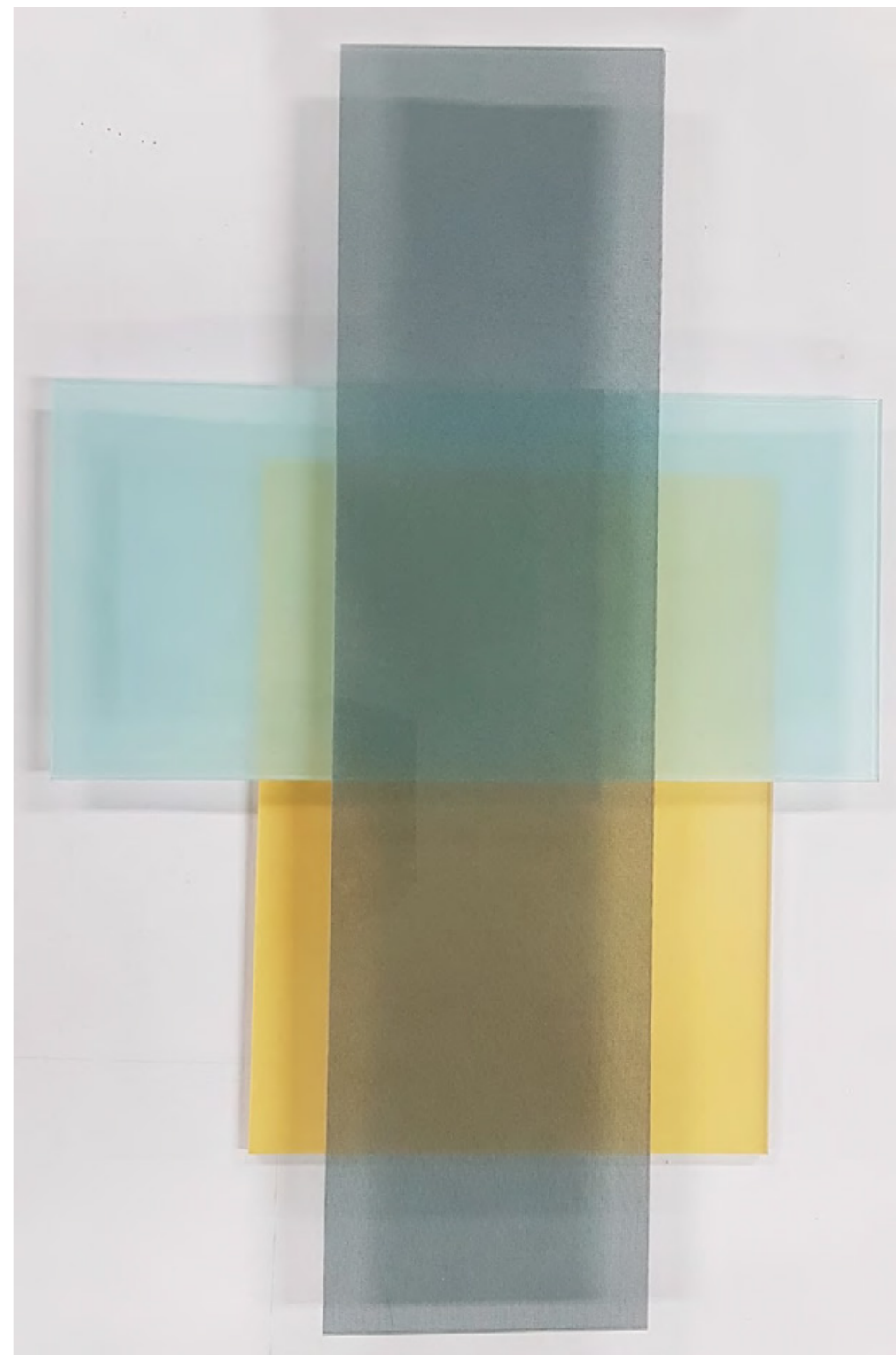
Clair de Lune V2
 600x50x360
 walnut, nobang, acylic
 2019

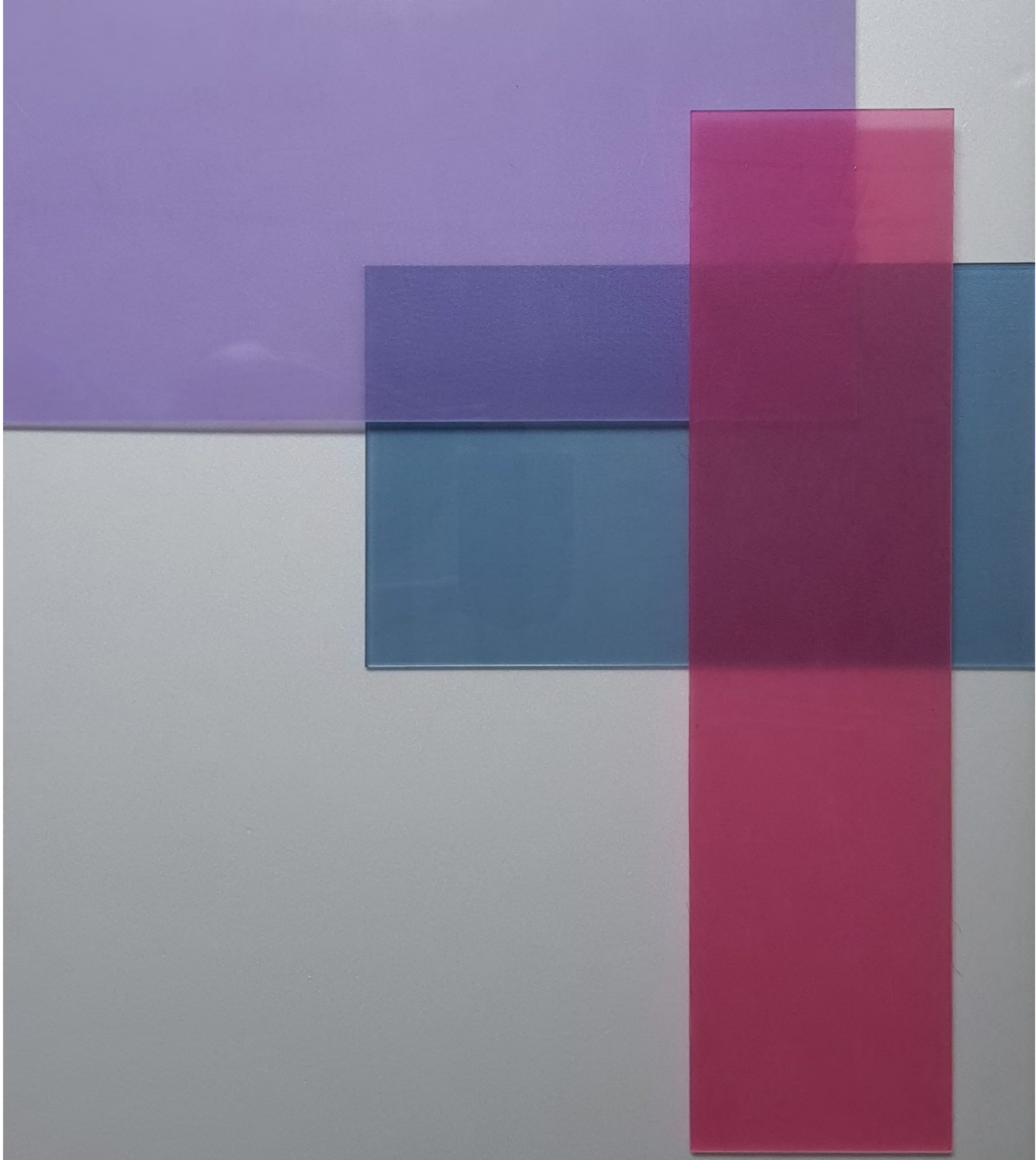


LLL(Layer&Layer&Lee), LHJ Serise

LLL(Layer&Layer&Lee) 2020
500x400x50
acrylic(astel)
2020

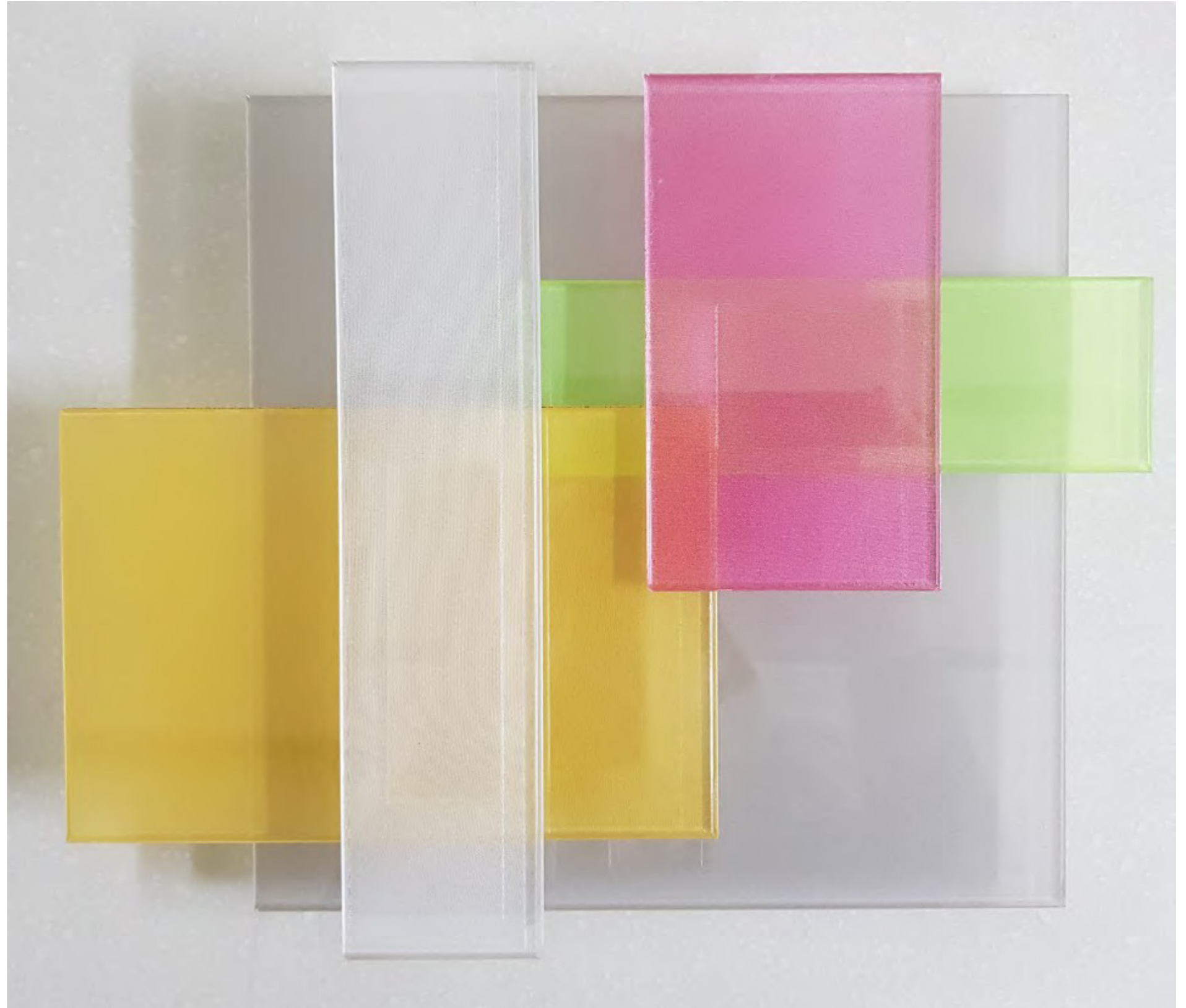
LLL(Layer&Layer&Lee) 01
550x600x80
acrylic(astel)
2018



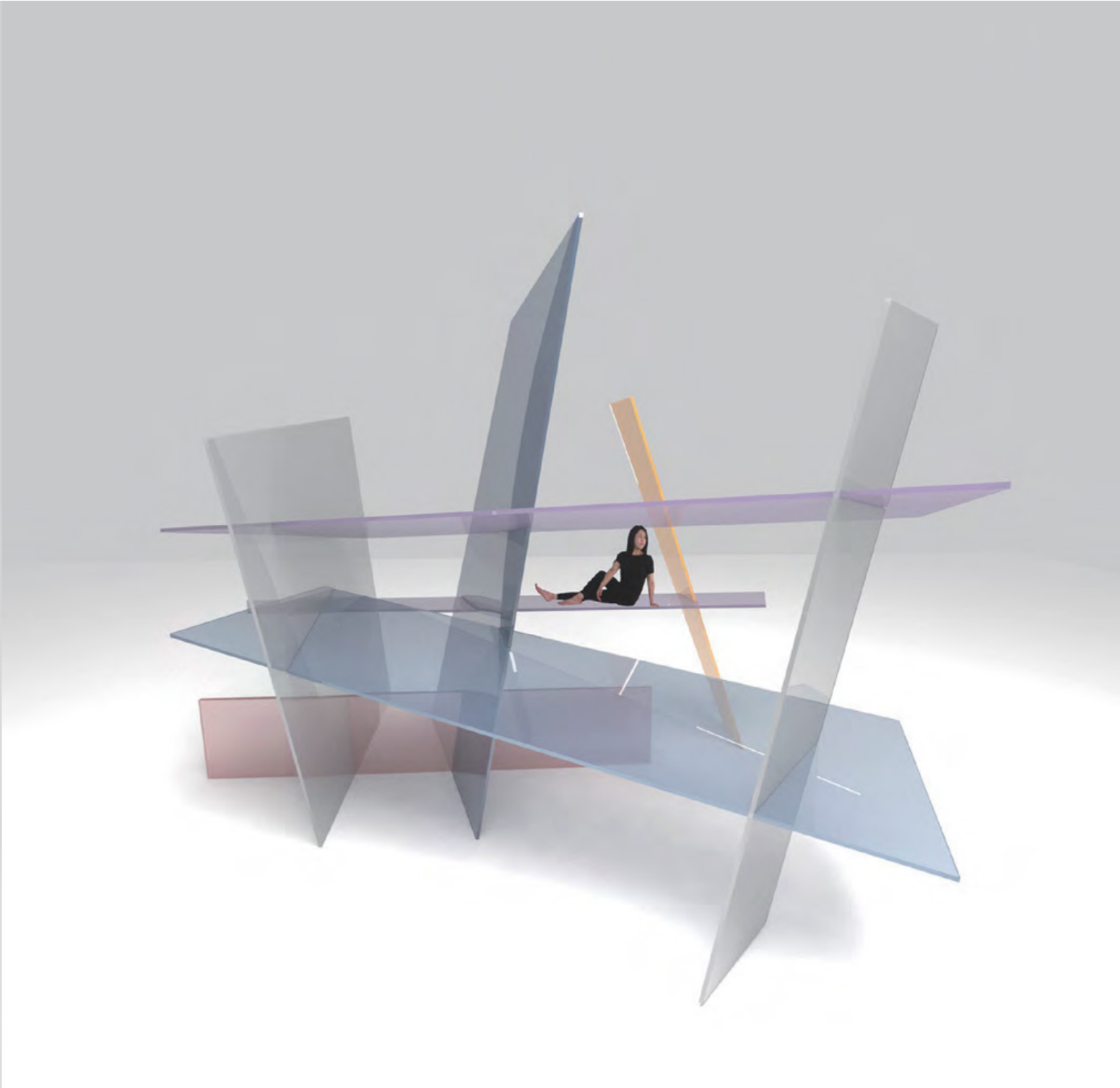


LLL(Layer&Layer&Lee) 02
550x600x80
acrylic(astel)
2018

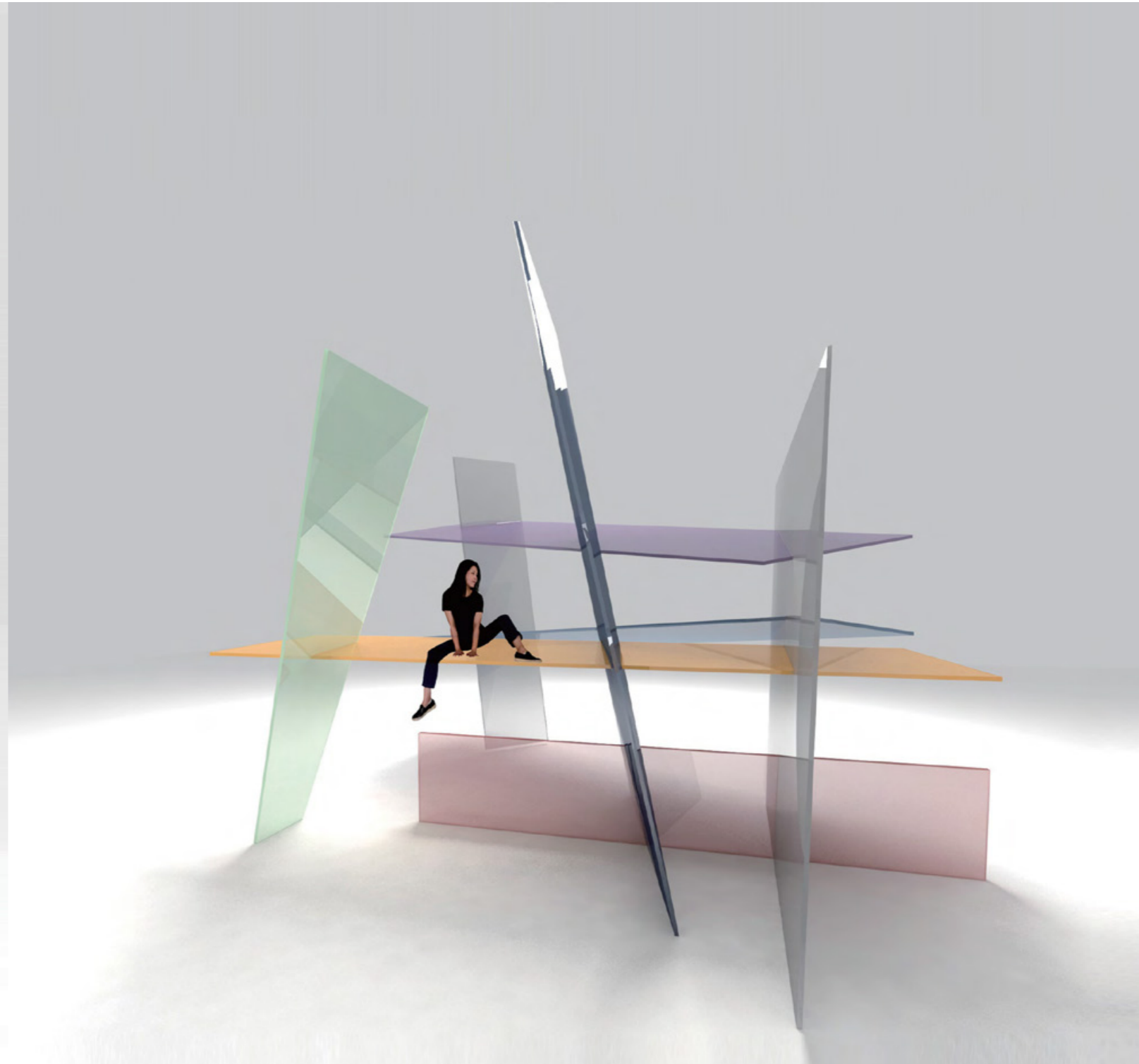
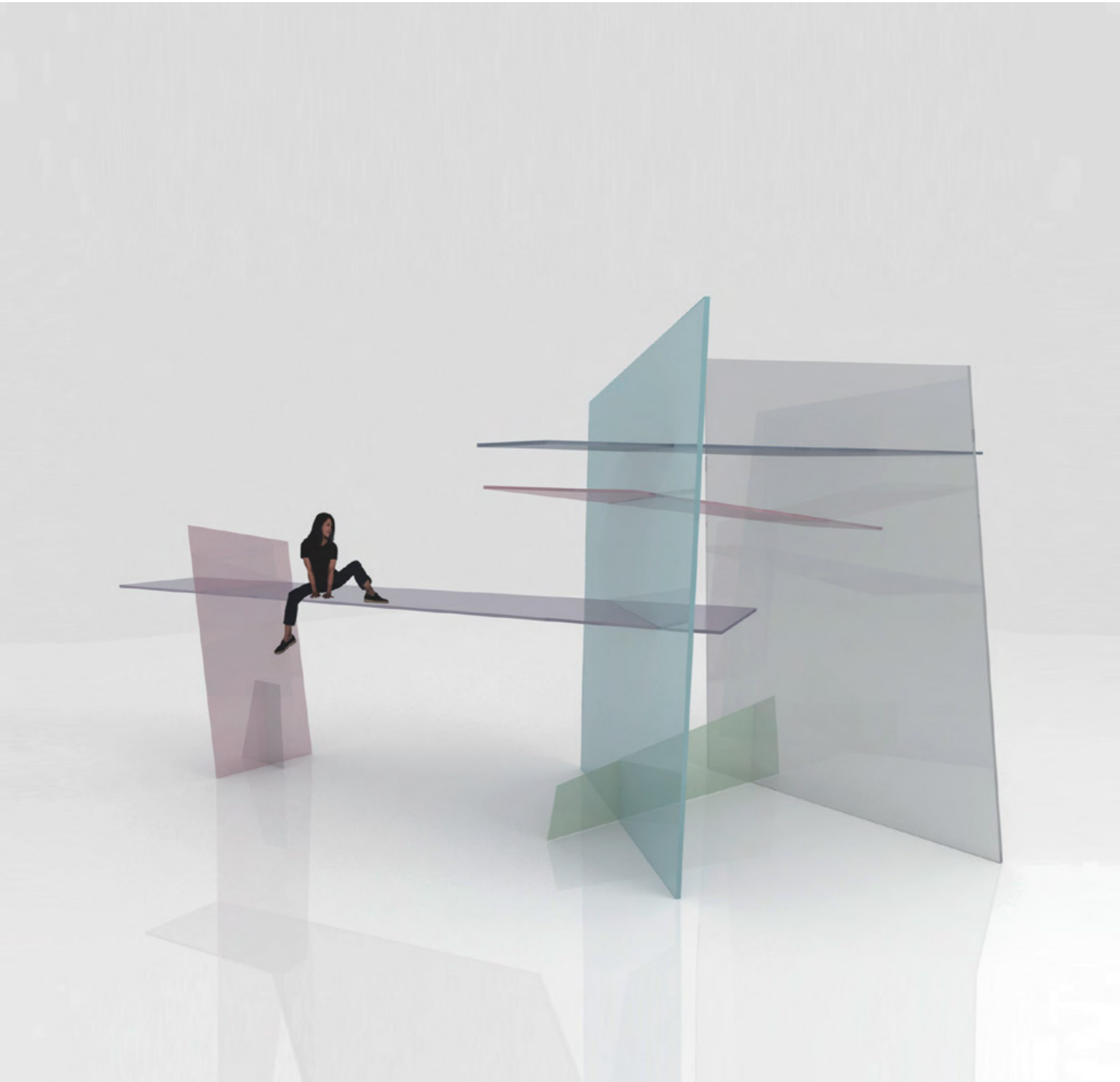
LLL(Layer&Layer&Lee) 03
300x300x80
acrylic(astel)
2019



LHJ Series 01 02 03
300x300x300
Acrylic, Printing

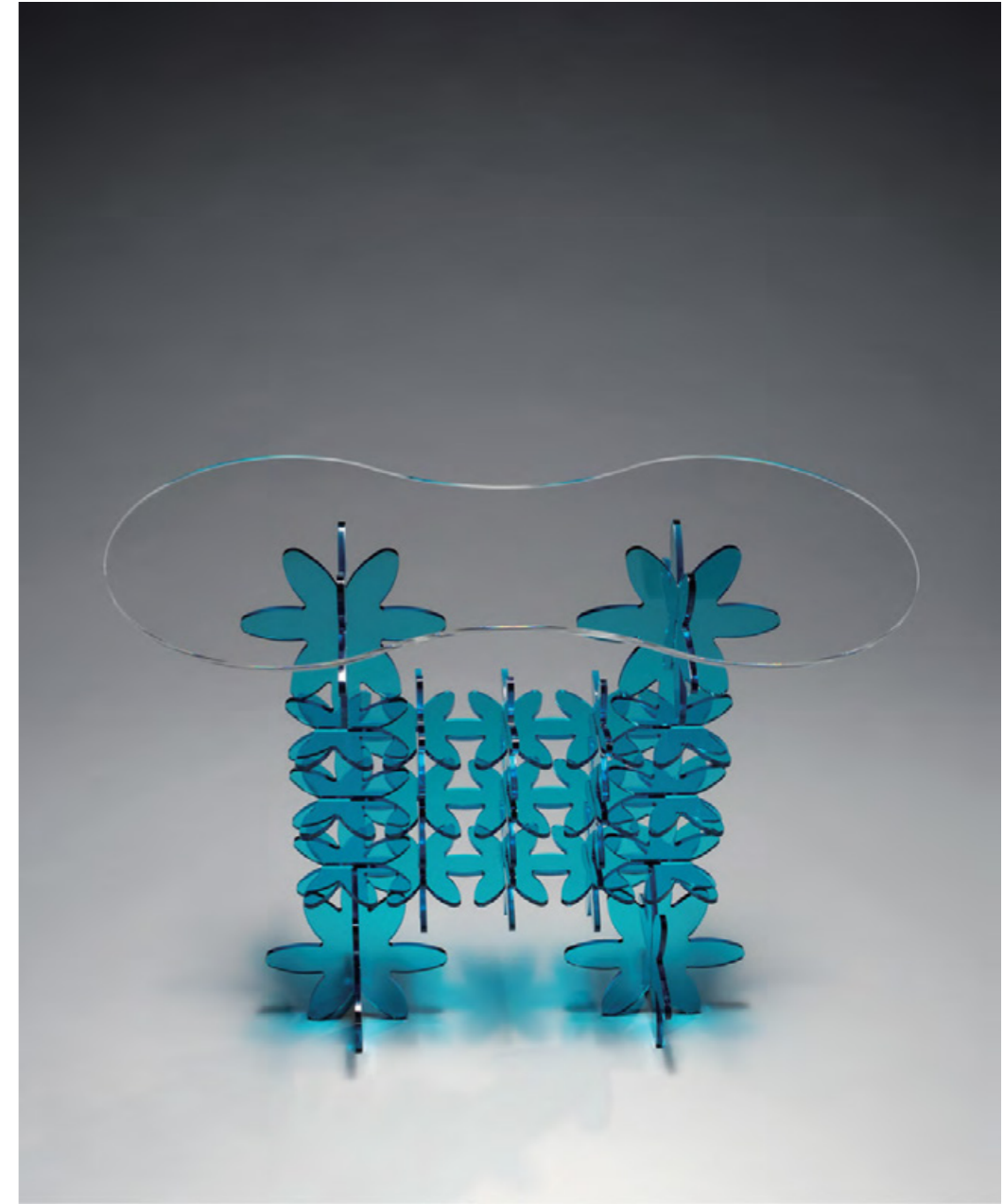


LHJ Series 01 02 03
300x300x300
Acrylic, Printing





Blooming 01
550x550x300
Acryl, glass
2010



Blooming 02
1200x450x600
Acryl, glass
2010



Row & Column 01
2000x900x750
Birch, Acrylic, Nobang
2015

Row & Column 02
1500x400x400
Birch, Acrylic, Nobang
2015

Row & Column 03
1200x500x750
Birch, Acrylic, Nobang
2015

