

# MBDESIGNS BIOGRAPHY

ARCHITECTURE | INTERIOR | PROJECT MANAGEMENT | CONSULTANCY | PRODUCT DESIGN

Renowned for his innovative, unique stylish designs, fused with a critical understanding of raw materials and how they function, Mohamed Badr has a well-earned prominent reputation in the world of architecture and interior design. With over 24 years of experience in design, project management and consultancy. History, music, nature and human potential exist at the core of every project Badr works on. Using this combination of expert practical skill and artistic focus, Badr creates sleek, contemporary designs imbued with nature, inspired by music and informed by life; each one with its own unique and special story.

Since our establishment in 1995, every member of the MB Designs family has strived to bring forth architectural excellence that inspires wellbeing, and we continue to do that everyday.

Our mission is one of life; we endeavor to strike the sophisticated balance between elegance, function, quality and value. Every project we design is a genuine reflection of its owner, be it a home, an office or a commercial space. Every detail we invest time in is an experience; a chance at a better quality of life and an outlet for the unlimited human potential that lies within us all. The spaces we use define much of who we are. They inspire us, comfort us & empower us to become the best possible versions of ourselves.

- mohamed badr

MBD  
ESIGNS

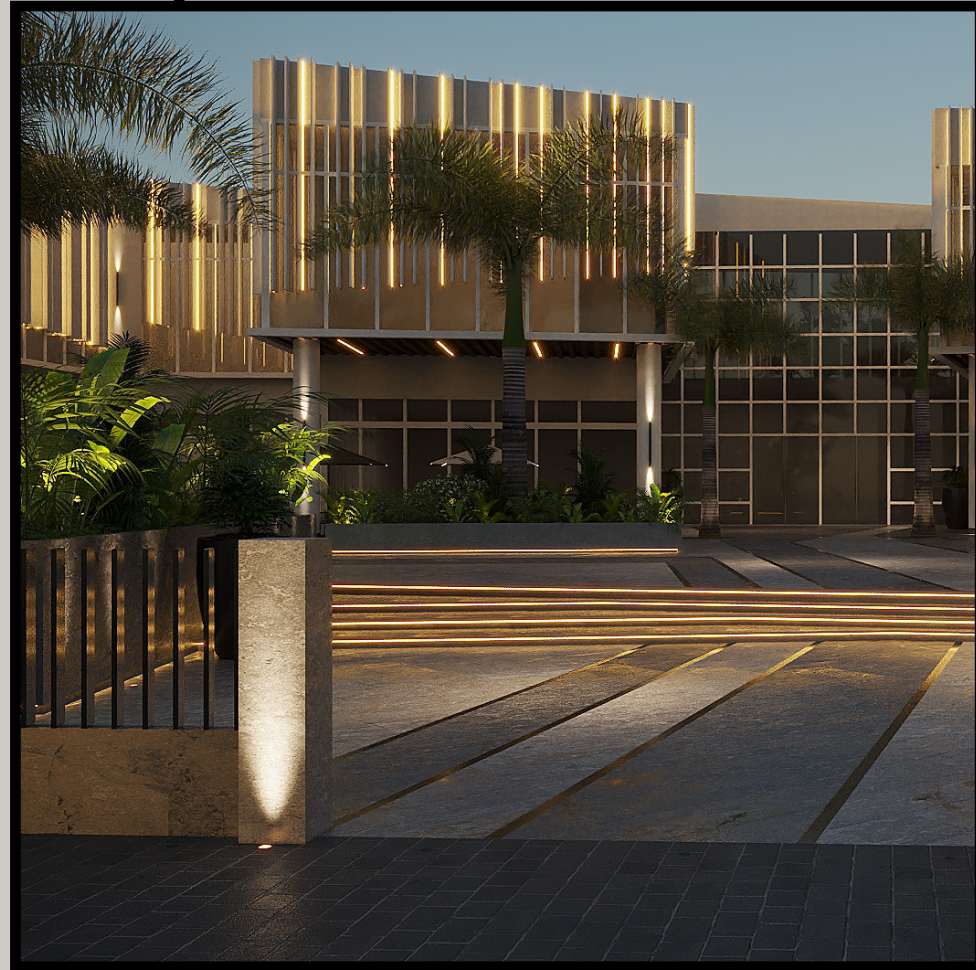


MOHAMED BADR



BY MOHAMED BADR

MBDESIGNS  
ARCH



A Commercial and Office Complex; this project integrates a commercial plaza and an office building in a way that makes each and every shop or office holds a prime location, a smart building that dialogs with the surrounding city being placed in the Extension of New Cairo in front of Mivida Compound, Standing Out with its eye catching angled structure and various leveled louvers, limiting sun exposure while also allowing some sun into the place, eliminating the need of shades with the extended concrete ceiling acting as a shade itself for the ground level. Playing with levels of the landscape and vertical lines this place brings a minimal innovative edge to the visitor.



[www.mbdesigns-eg.com](http://www.mbdesigns-eg.com)



MOHAMED BADR



ARCHITECTURE | INTERIOR | PROJECT MANAGMENT | CONSALTANCY | PRODUCT DESIGN

*Mountain View*

TIMELESS  
LUXURIOUS  
EFFORTLESS

*Eastown*



*Residential* interiors, Mohamed Badr combining between differences between luxurious and effortlessly looking spaces. By using the space of Villa Mountain View's master suite in an unconventional way; adding vertical washed out mirrors throughout the corners of the room to give the illusion of a never ending space, wooden cladding behind the bed adding warmth and the use of a tropical wallpaper contrasting with the grey tones of the overall design while keeping it fresh and trendy. Adding to the continuity and

depth of the room he used a U shaped sofa to be displayed under the dangling light pendants facing the TV unit. Along the same lines of warm tones we look into Villa Eastown's reception and its exceptional communication of both comfort and luxury in one place, with round glass table tops and the solid base in gold matching the hand rest of the chairs and the metal partition that separates between this area and the dinning area also in gold, A general soft ambient added though light indirectly between the selves of the wall unit making a huge difference in the overall mood.