

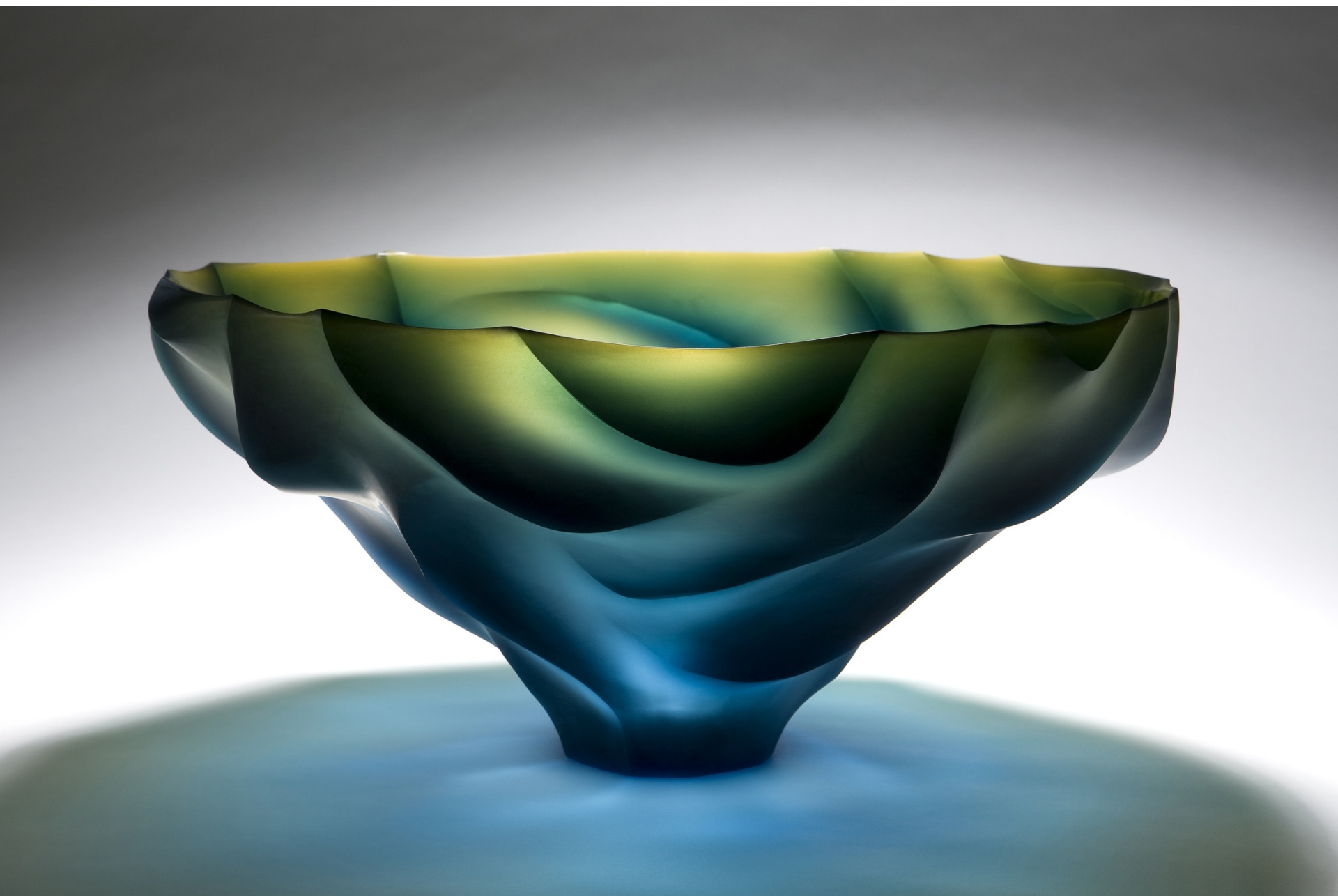


Joon Yong Kim

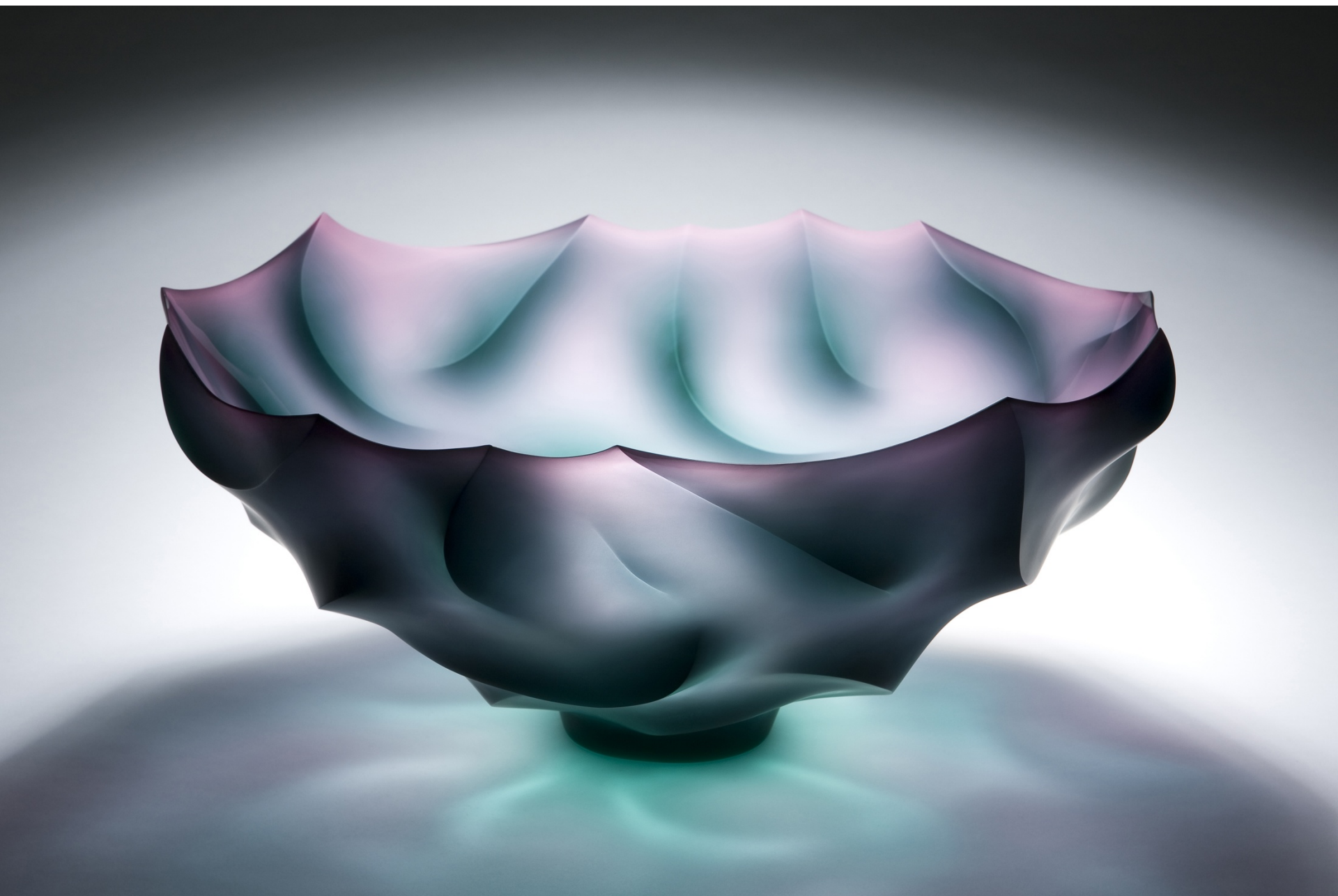
A glass artist in South Korea's emerging glass scene, Kim is mesmerised by the colour palette of the natural world. Joon Yong Klim is a professor at Cheong-Ju University and owner of the Joon glass studio in Goyang, South Korea. Kim's work has been exhibited internationally in both group and solo exhibitions and is widely collected. In 2013 Kim won silver in the annual International Exhibition of Glass Kanazawa, a prominent platform for contemporary glass, in Kanazawa Japan. One of 30 Finalists in 2018 Loewe Craft Prize and his work can be seen in public and private collections such as the Chrysler Museum of Art and Korea's National Museum of Modern and Contemporary Art.

The sunset scatters shades of red on the western horizon.

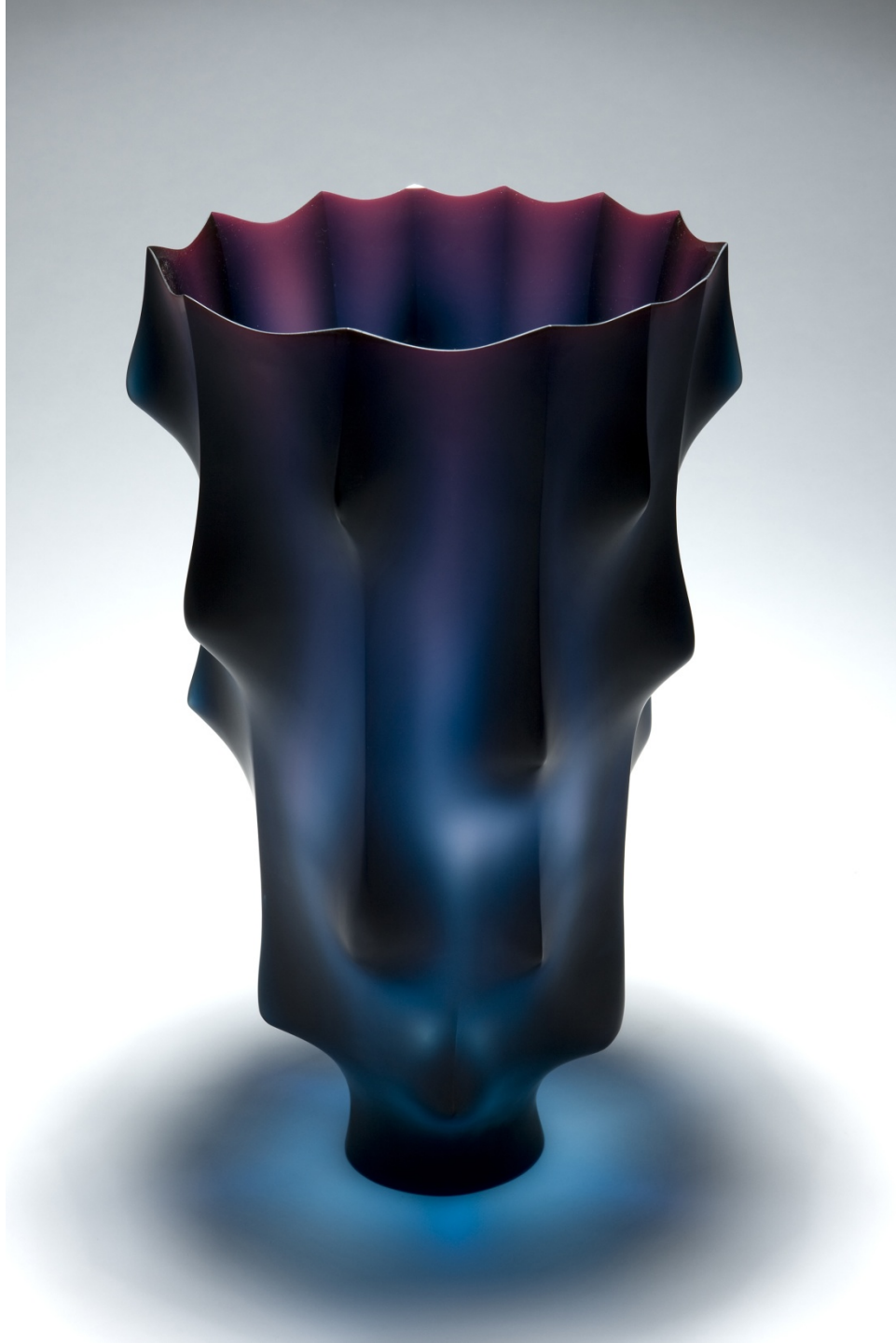
Light in itself has no color but the Earth's environment creates a spectrum of colors. I am most moved by the shades of red spreading between the clouds after a rainfall. I cry out with overwhelming emotions. I have no idea why I am so drawn to it but the symphony of colors let out by the sunset is mesmerizing one that translates well into glass. It gives me infinite inspiration. Vessels I make are for capturing light and time.



Landscape of a Spirit 45x45x27cm, blown, coldworked, glass, 2010



Green Valley 41x41x20cm, blown, coldworked, glass, 2010



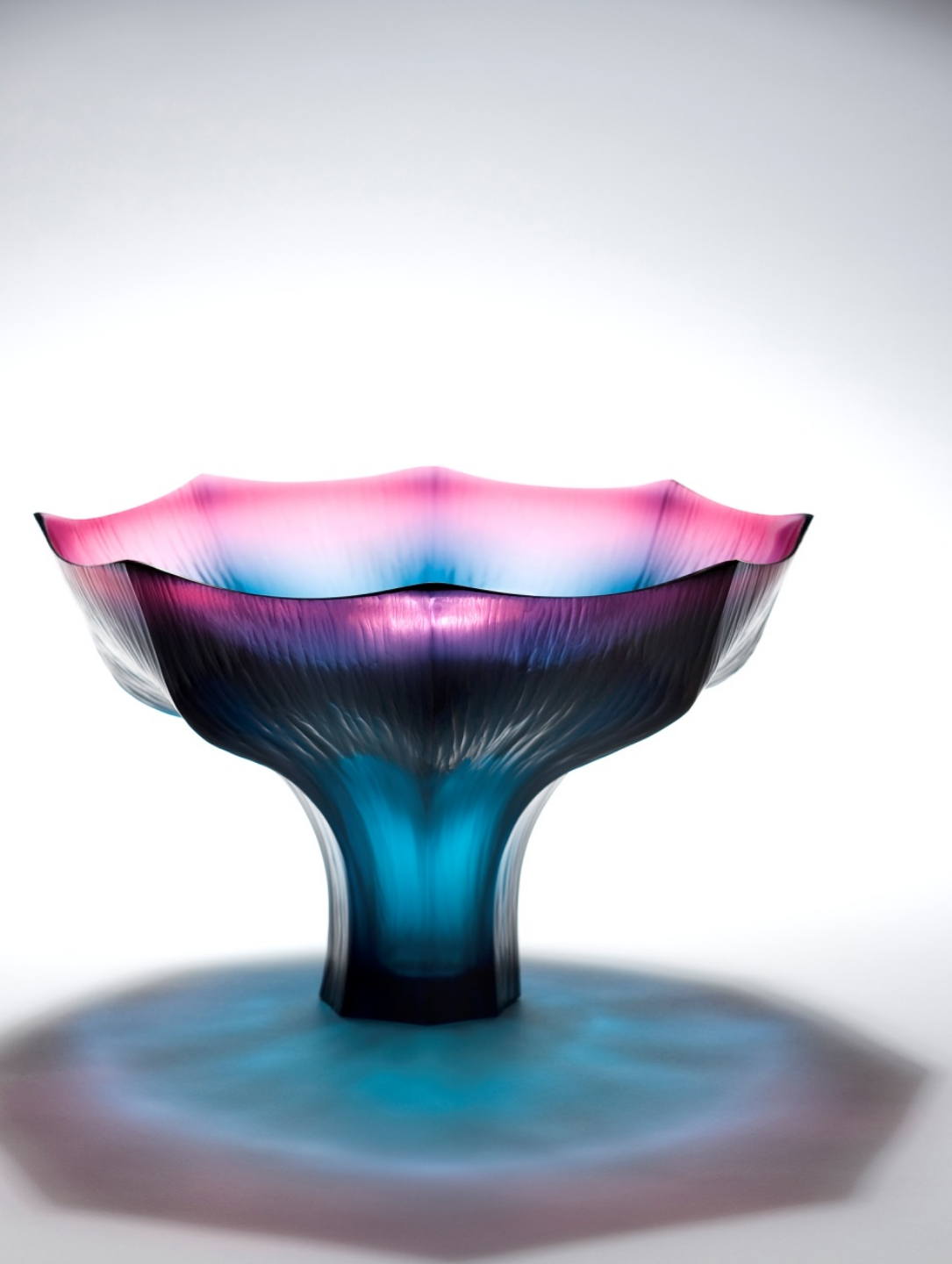
Blue Tears 29x29x46cm, blown, coldworked, glass, 2010



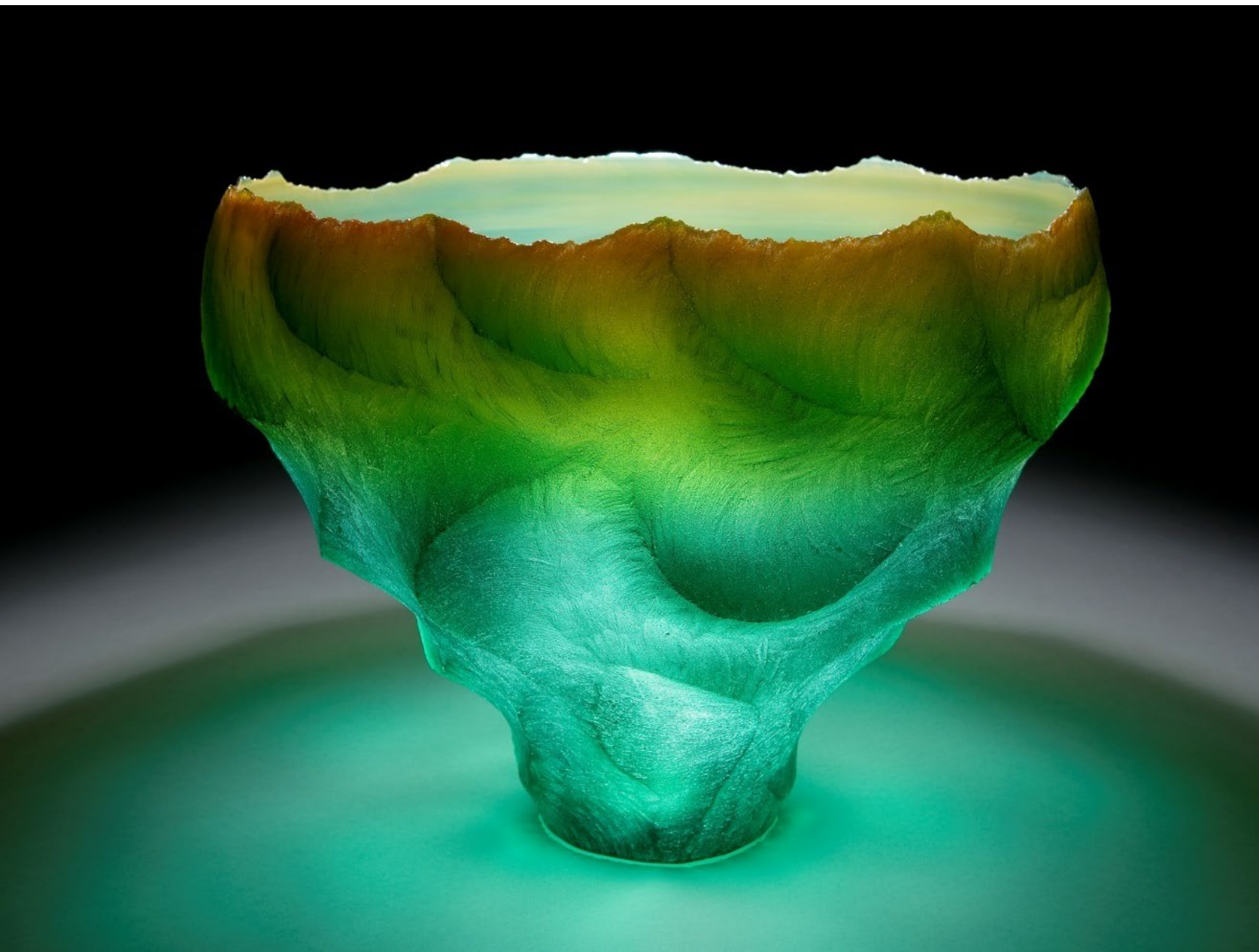
Green Leaf 40x40x29cm, blown, coldworked, glass, 2011



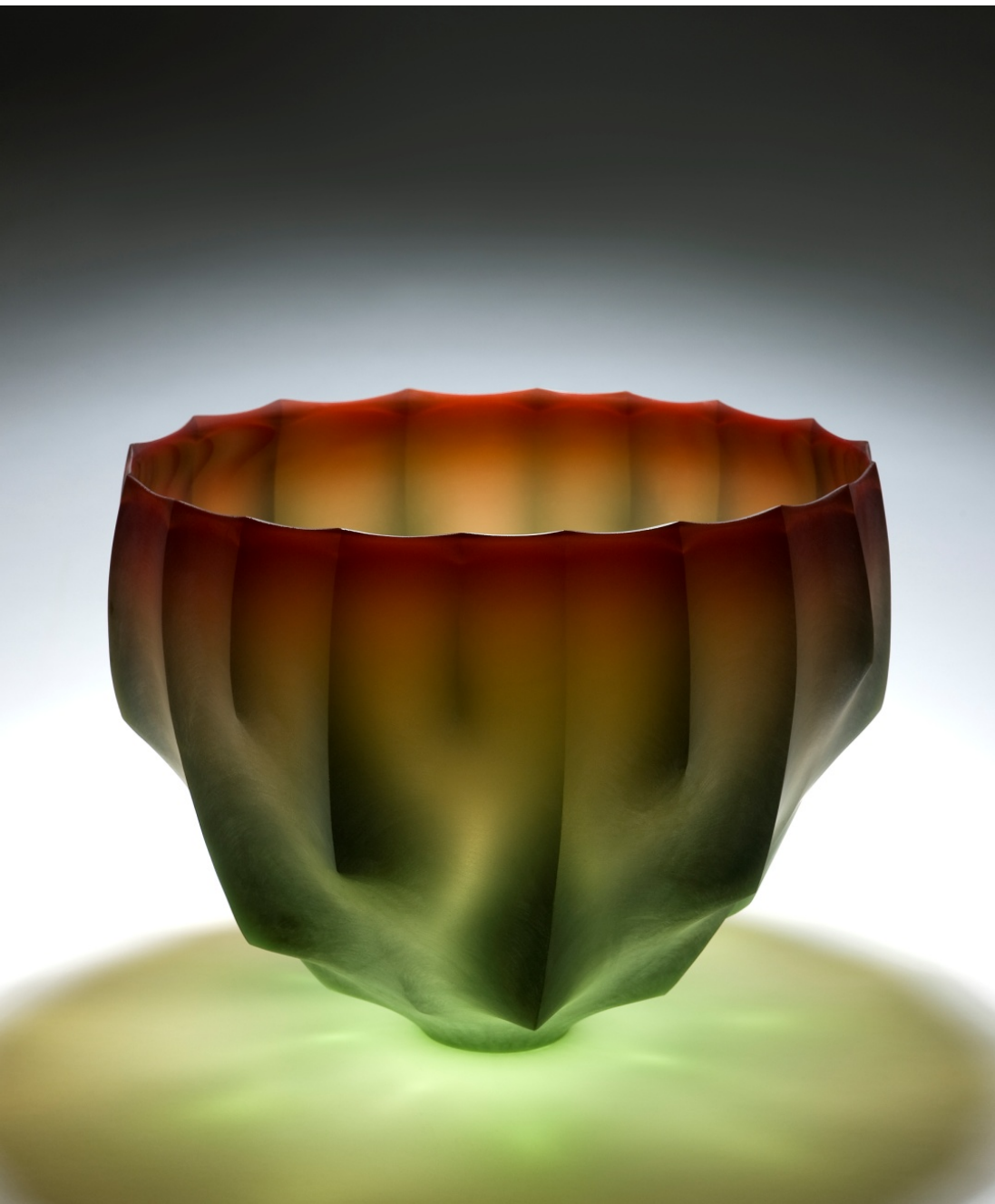
Sunset in Adelaide 35x35x26cm, blown, coldworked, fire polished, glass, 2012



Flower of Light 27x27x17cm, blown, coldworked, glass, 2013



Sunset in the Wave 48x48x36cm, blown, coldworked, fire polished, glass, 2013



Tears in the Sunset 48x48x43cm, blown, coldworked, glass, 2014