

L E A T H E R W A L L

2 0 2 0

Studioart presenta la nuova collezione 2020, ispirata alla natura e alle sue geometrie. DUO è un rivestimento innovativo ed elegante realizzato con un doppio strato di pelle.

Accattivanti geometrie triangolari, intagliate sulla superficie, si uniscono a formare un insieme organico. Resta impressa sulla parete la memoria di fossili, alberi, il passare della tempesta.

La nuova collezione vede le sfumature del Palisades di Adam Hunter immerse nella vivacità dei colori metallici dell'oro e dell'argento, mentre la pelle mushroom dona maggiore tridimensionalità al Le Mans di Grove Studio.

Studioart presents the new 2020 collection inspired by the geometry of nature. DUO is an innovative leather wall covering solution made of two layers of leather.

Fascinating triangular geometries are engraved in the surface, and are arranged together to make a whole. The design that originates recalls memories of fossils, trees and the passage of a storm.

The new collection endows the Palisades ombre effect by Adam Hunter with metallic brightness of gold and silver, while Mushroom leather adds depth to Le Mans by Grove Studio.

studioart



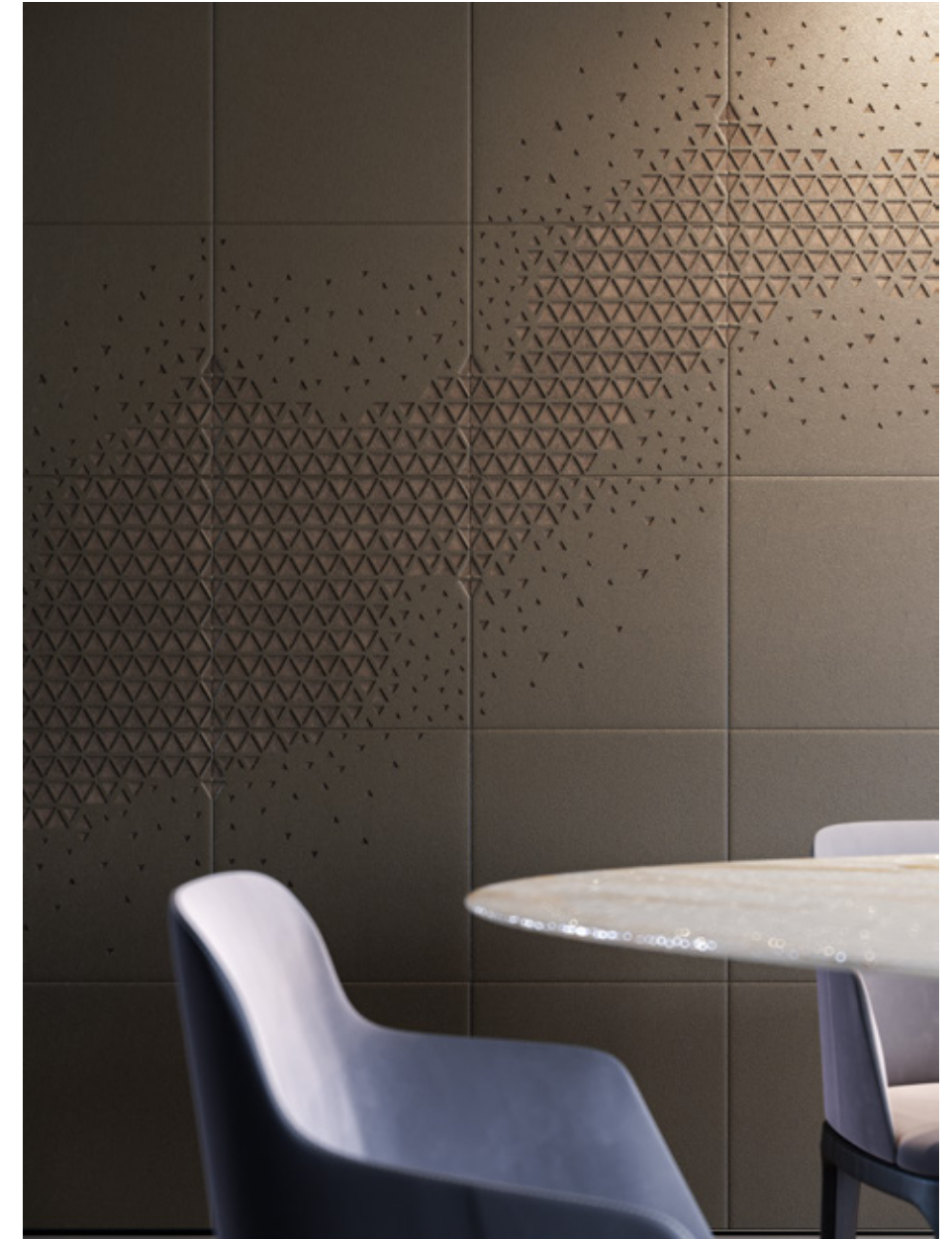
DUO — City nuvola / Watersuede 412

NEW

duo



DUO — City cenere / Watersuede 353





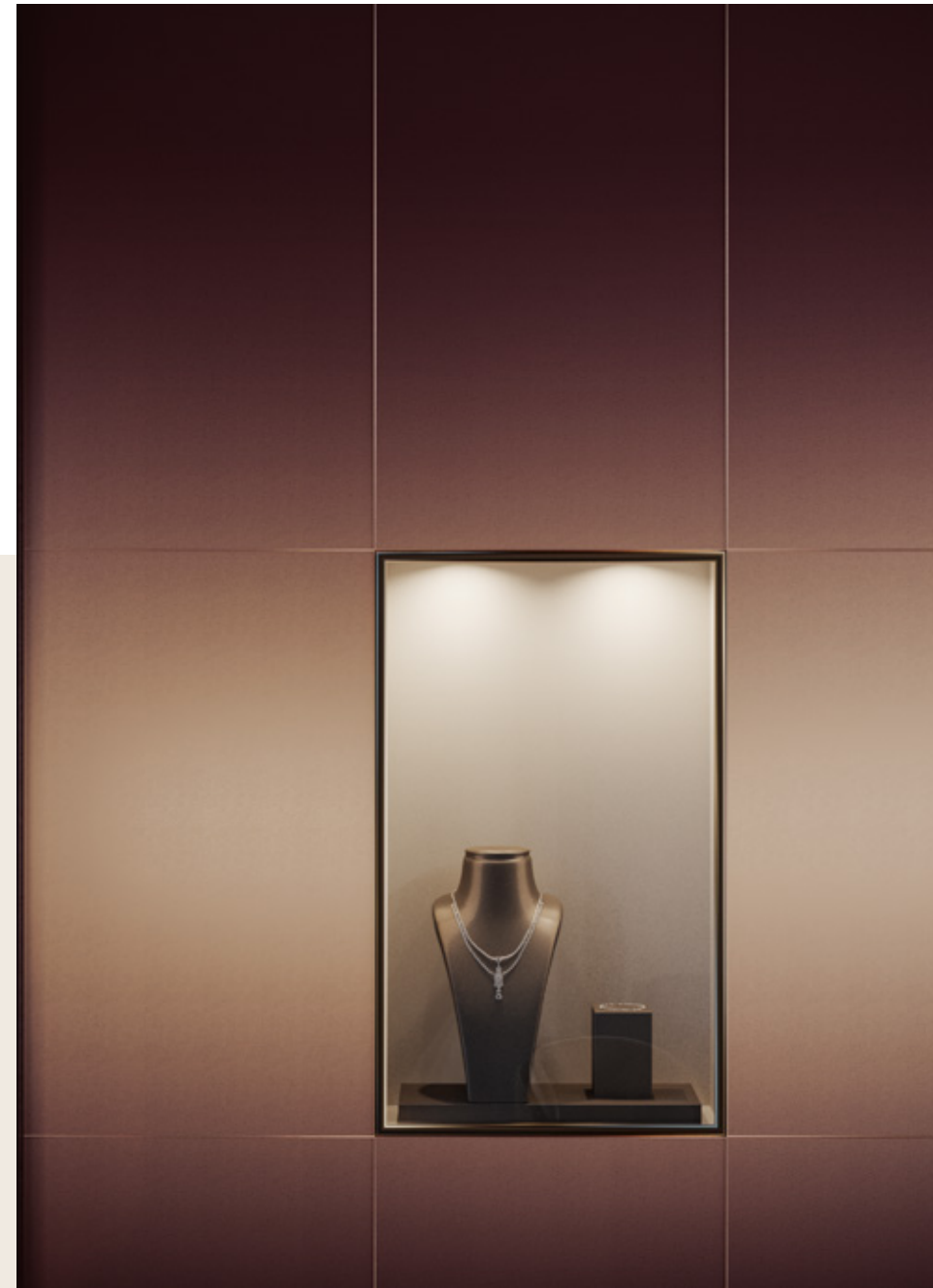
DUO — City voronof / Wassersuede sage







PALISADES — Gold



palisades



PALISADES — Silver



LE MANS — Mushroom Fairy / champagne metal inserts



le mans



LE MANS — Mushroom Oltremare / silver metal inserts

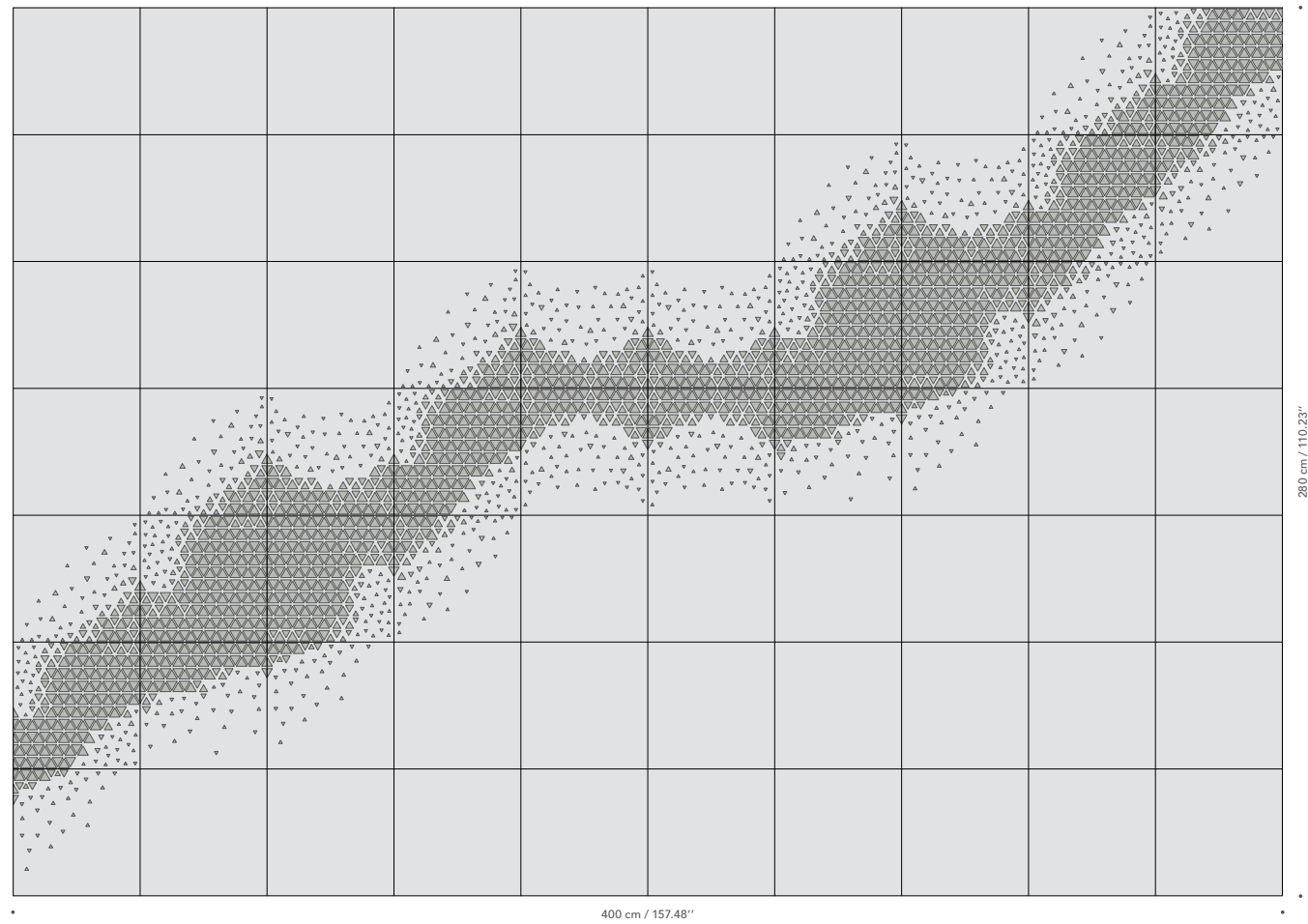
technical sheets

- **Duo**
- **Palisades**
- **Le Mans**

Per ulteriori informazioni consultare
il catalogo generale digitale
oppure il sito www.studioart.it

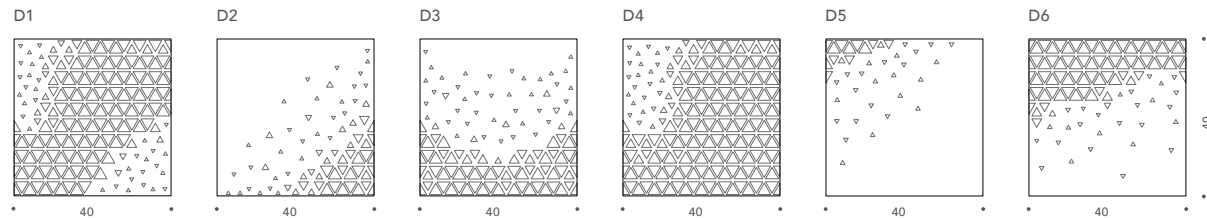
*For further details,
please see the digital general catalogue
or www.studioart.it*

SCHEMA DI POSA — LAYOUT



FORMATI DISPONIBILI — AVAILABLE SIZES

40x40 cm / 15.74x15.74''



PELLI — LEATHERS

PALETTE 1



CITY NUVOLA
top layer

WATERSUEDE 412
bottom layer

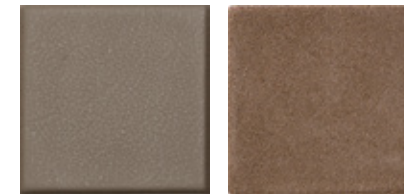
PALETTE 4



CITY PASTORIUS
top layer

WATERSUEDE 10
bottom layer

PALETTE 2



CITY CENERE
top layer

WATERSUEDE 353
bottom layer

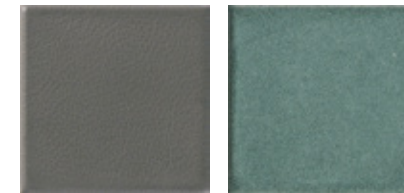
PALETTE 5



CITY STORM
top layer

WATERSUEDE 415
bottom layer

PALETTE 3



CITY VORONOF
top layer

WATERSUEDE SAGE
bottom layer

PALETTE 6



CITY BURRO
top layer

WATERSUEDE IVORY
bottom layer

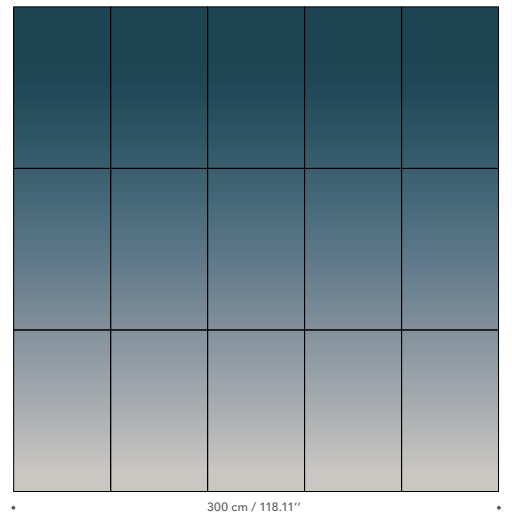
NOTE — NOTES

I formati indicati in centimetri sono esatti.
La conversione in pollici è approssimativa.

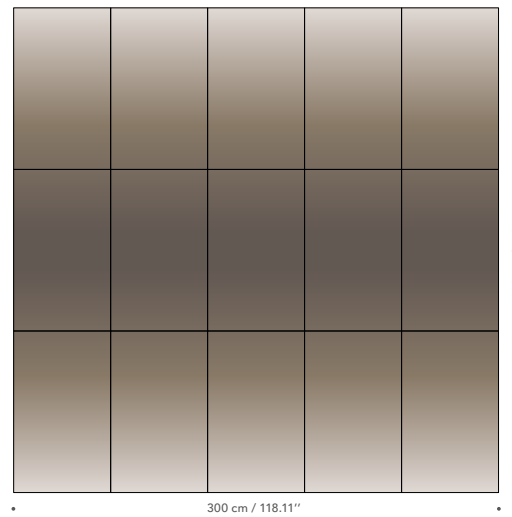
Metric measurements are exact.
Conversion to inches is approximate.

SCHEMI DI POSA — LAYOUT OPTIONS

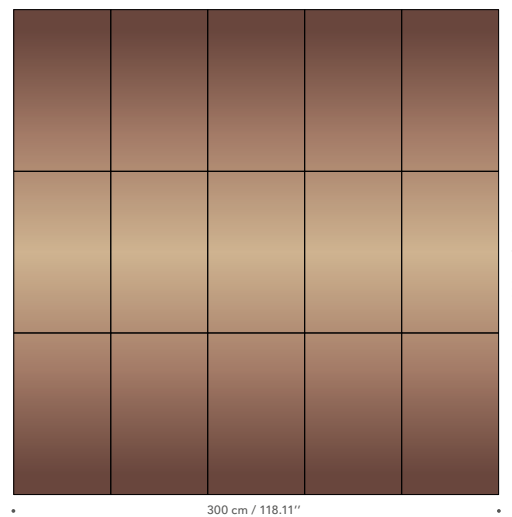
SILVER / SCHEMA A — LAYOUT A



PALETTE 6 / SCHEMA B — LAYOUT B



GOLD / SCHEMA C — LAYOUT C



PALETTE — PALETTES



FORMATO DISPONIBILE — AVAILABLE SIZE

60x100 cm / 23.62"x39.37"



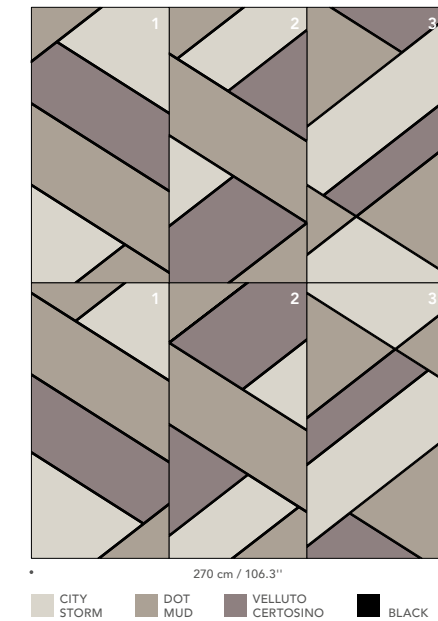
NOTE — NOTES

I formati indicati in centimetri sono esatti.
La conversione in pollici è approssimativa.

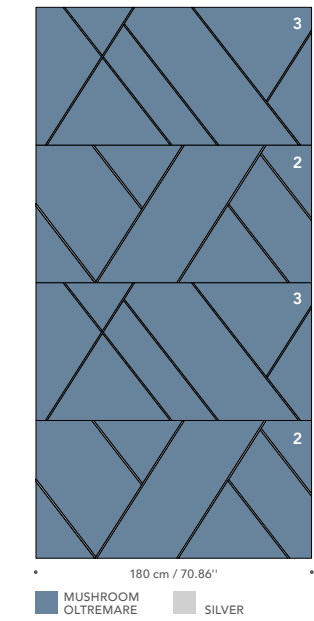
Metric measurements are exact.
Conversion to inches is approximate.

SCHEMI DI POSA — LAYOUT OPTIONS

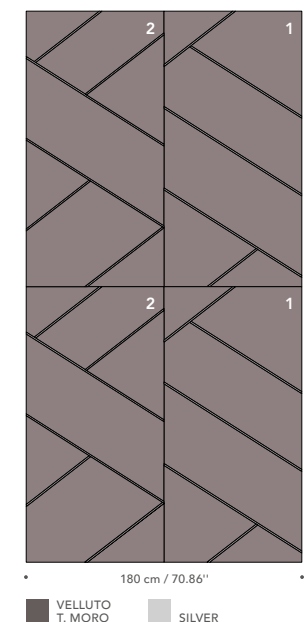
SCHEMA A — LAYOUT A



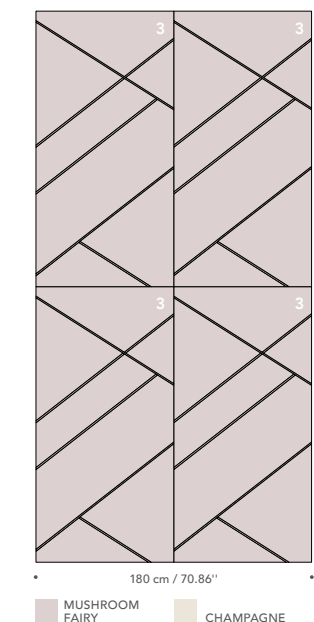
SCHEMA B — LAYOUT B



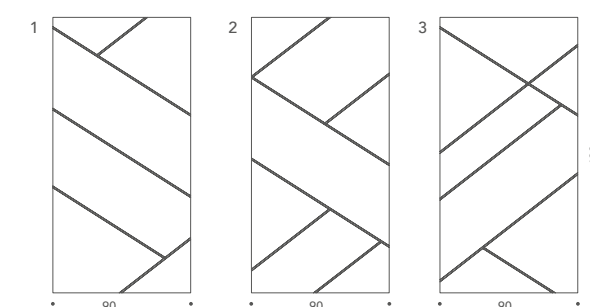
SCHEMA C — LAYOUT C



SCHEMA D — LAYOUT D



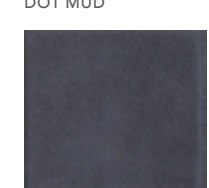
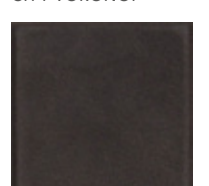
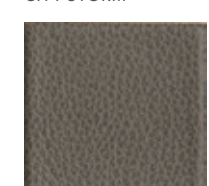
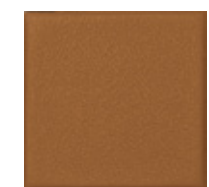
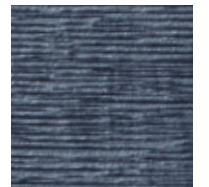
FORMATI DISPONIBILI — AVAILABLE SIZES



90x180 cm / 35.43x70.86"

Forniti in pannelli.
Provided in panels.

PALETTE — PALETTES



INSERTI METALLICI — METAL INSERTS



NOTE — NOTES

I formati indicati in centimetri sono esatti.
La conversione in pollici è approssimativa.

Metric measurements are exact.
Conversion to inches is approximate.

studioart

Via Lungochiampo, 125
36054 Montebello Vicentino (VI)
Italia

T +39 0444 453745
info@studioart.it
www.studioart.it

CREDITS

concept: Ottodesign
art direction and styling: Tommaso Gornati
3D images: Truetopia

