

AGGLOTECH[®]

ARCHITECTURAL TERRAZZO

projects and colours

2024



AGGLOTECH realizza il suo Architectural Terrazzo interamente in Italia, seguendo i più alti standard qualitativi certificati e nel pieno rispetto delle norme ambientali.

Un prodotto formulato da team tecnici di consolidata esperienza e sottoposto a rigorosi test specifici riconosciuti a livello mondiale.

Per la sua produzione, AGGLOTECH ha scelto l'ecosostenibilità: il protocollo aziendale prevede l'utilizzo esclusivo di materiali naturali e il recupero degli sfridi di lavorazione dell'industria lapidea. Le graniglie di marmo, insieme al cemento Portland 52,5 e all'acqua, vengono lavorati a freddo senza l'utilizzo di combustibili fossili e resine sintetiche.

Architectural Terrazzo è un materiale da rivestimento ecocompatibile, ideale per il Green Building, a bassissime emissioni di sostanze organiche volatili e totalmente riciclabile come inerte a fine vita.

AGGLOTECH produces Architectural Terrazzo entirely in Italy to the highest standards of certified quality and in full compliance with environmental laws and regulations.

It is designed by a team of experts with longstanding experience in the field and is subjected to rigorous, globally recognized testing.

At AGGLOTECH, we have made a choice for environmental sustainability. Our company protocols call for the use of all-natural materials exclusively and for the transformation of marble aggregate recovered from marble manufacturers. Combined with 52.5 Portland cement and water, this aggregate is transformed by way of cold processes that require no fossil fuels or synthetic resins.

Architectural Terrazzo is an environmentally sustainable cladding material that is ideal for use in green construction. It emits extremely low levels of volatile organic compounds and is fully recyclable as an inert substance at the end of its useful life.

AGGLOTECH fertigt seinen Architectural Terrazzo unter Befolgung höchster zertifizierter Qualitätsstandards und unter vollständiger Einhaltung der Umweltvorschriften in vollem Umfang in Italien.

Das Produkt wurde von Teams aus erfahrenen Technikern konzipiert und weltweit anerkannten strengen spezifischen Prüfungen unterzogen.

Für seine Produktion setzt AGGLOTECH auf ökologische Nachhaltigkeit: Dem Unternehmensprotokoll zufolge sind die ausschließliche Nutzung von Naturmaterialien und die Wiederverwertung der Verarbeitungsabfälle aus der Steinindustrie vorgesehen. Marmorsplitt, Portlandzement 52,5 und Wasser werden kalt ohne fossile Brennstoffe und Kunstharze verarbeitet.

Architectural Terrazzo ist somit ein umweltverträgliches Beschichtungsmaterial, das sich auszeichnet für ökologisches Bauen eignet, nur einen geringen Anteil an flüchtigen organischen Stoffen besitzt und am Ende seines Lebenszyklus als Inertstoff vollständig recycelt werden kann.





HANS HOLLEIN BANK LIMA, PERU



material
SB 250 Lido
SB 160 Grigio Carrara

partner
Artco

Architect
WORKac

MARIENTURM

GERMANY

material
SB 130 Aggloceppo









RESIDENTIAL BUILDING

TAOYUAN, TAIWAN

material
SB 143 Bianco Carrara 25

partner
Stone Age

PRIVATE VILLA

KUALA LUMPUR, MALAYSIA

material

SB 240 Torcello

SB 130 Aggloceppo

SB 140 Ca' D'Oro

partner

Stone Empire









S-OASIS OFFICE BUILDING

THAILAND

material

SB 105 Antracite

partner

Stonesurfaces Thailand

OFFICE BUILDING

PHILIPPINES

material

SB 104 Grigio Scuro

SB 100 Bianco

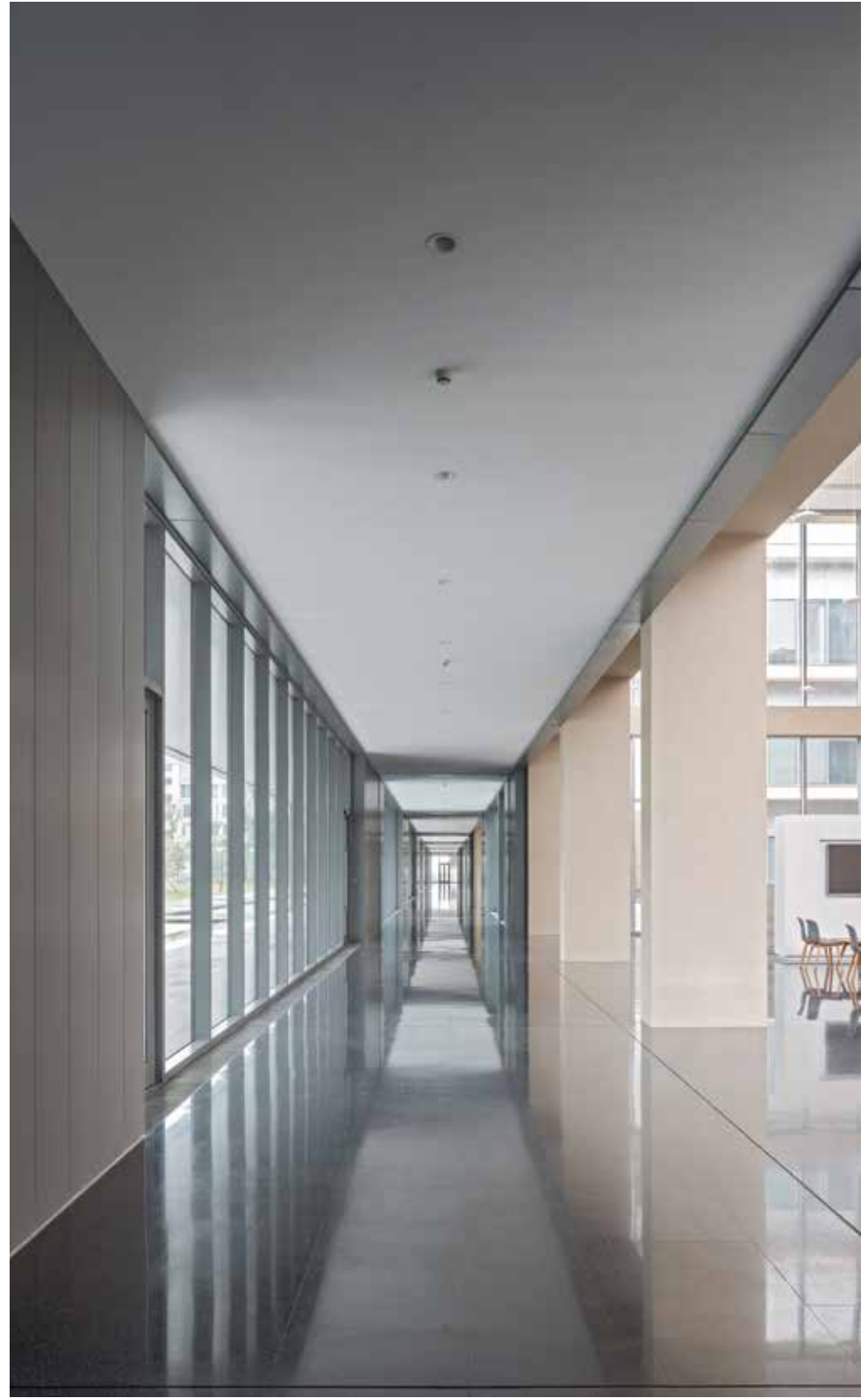
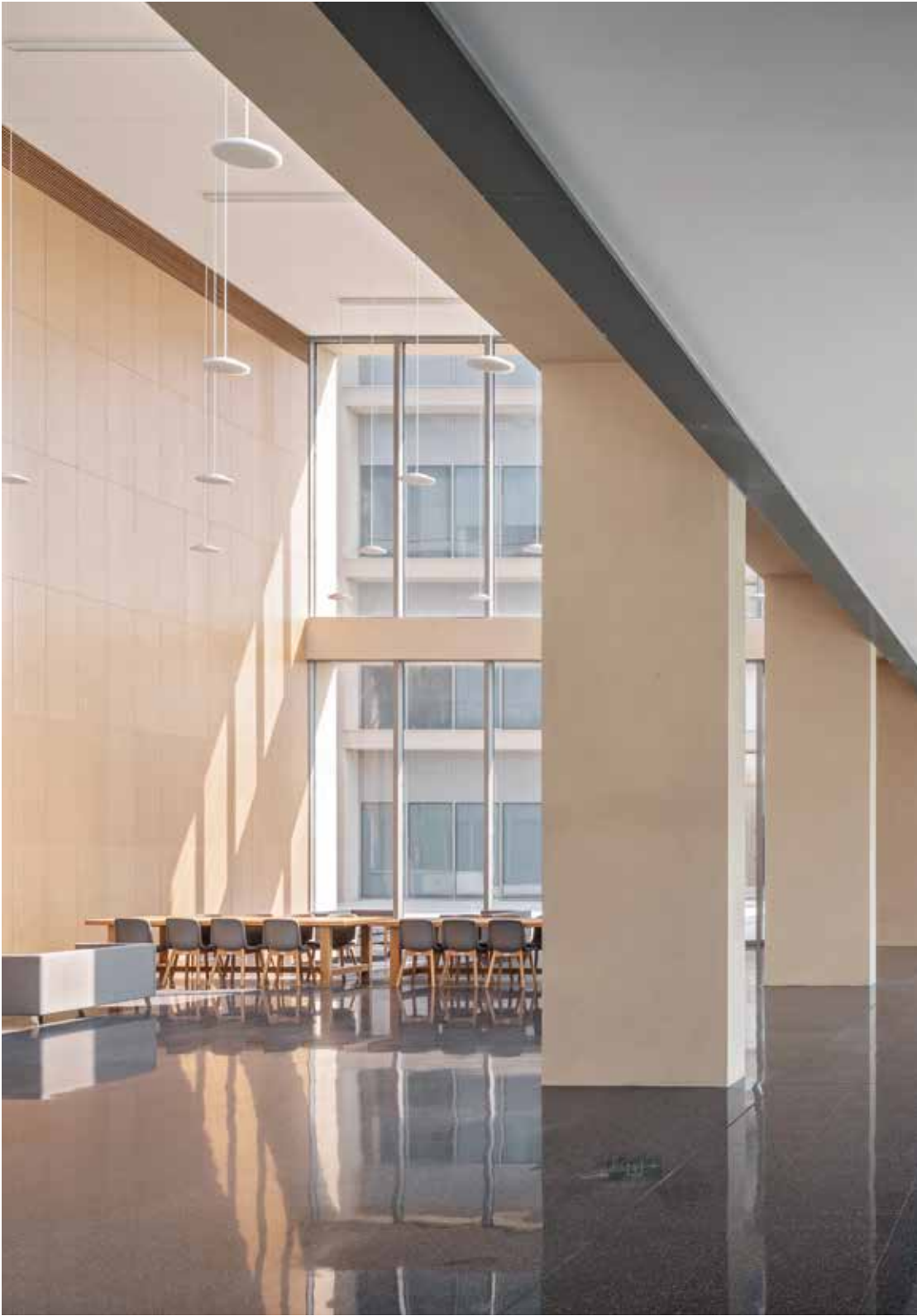
SB 171 Nero Venato

partner

Euroasia







ZHEJIANG MEDICINE HEADQUARTERS

CHINA

material
SB 105 Antracite

partner
Ideal Source



THE BRYANT MANHATTAN APARTMENT

NEW YORK, USA

Supplied by New YorkStone

material

SB 230 Pellestrina









PANTHEON ESTATE

MYKONOS

material

SB 178 Bianco Carrara 09

partner
Progetto

PORSCHE SHOWROOM

WORLDWIDE

material

SB 100 Bianco

SB 104 Grigio Scuro









THE YANGTZE RIVER DELTA INVESTMENT

SHANGHAI

material

SB 100 Bianco

SB 102 Grigio Chiaro

partner

Ideal Source

PLANET FARMS

BRIANZA, ITALY

material

SB 124 Grigio Rotondo

partner

Trapattoni Marmi







VALENTINO

WORLDWIDE



material

REG 1712 Valentino



EXCHANGE SQUARE

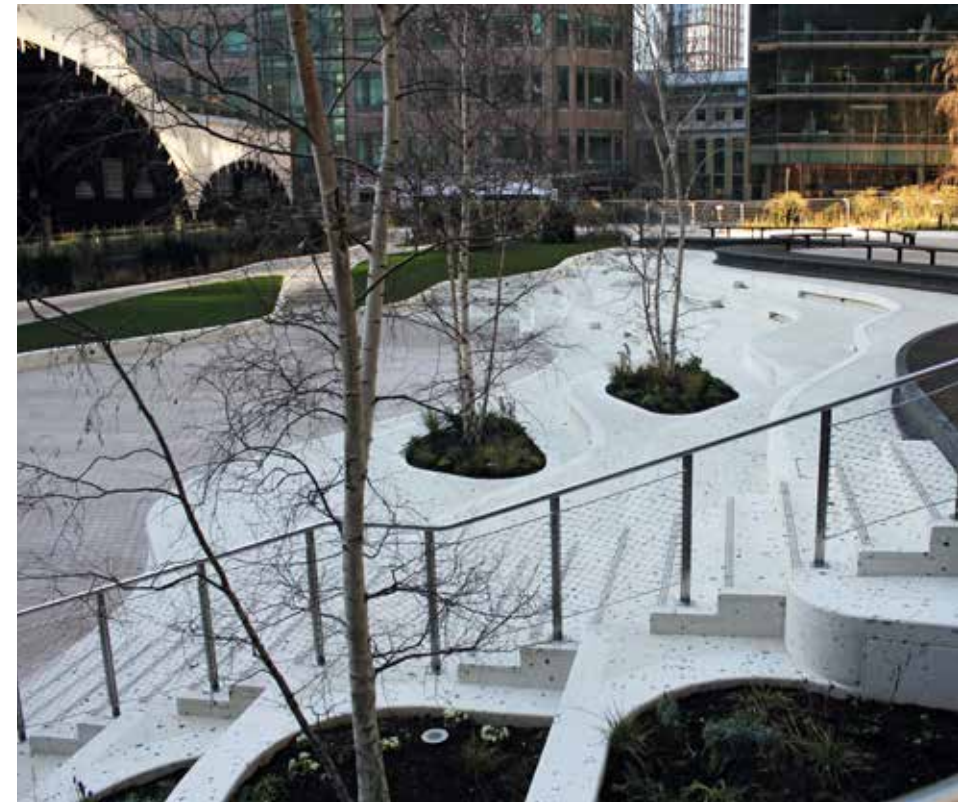
LONDON, UNITED KINGDOM

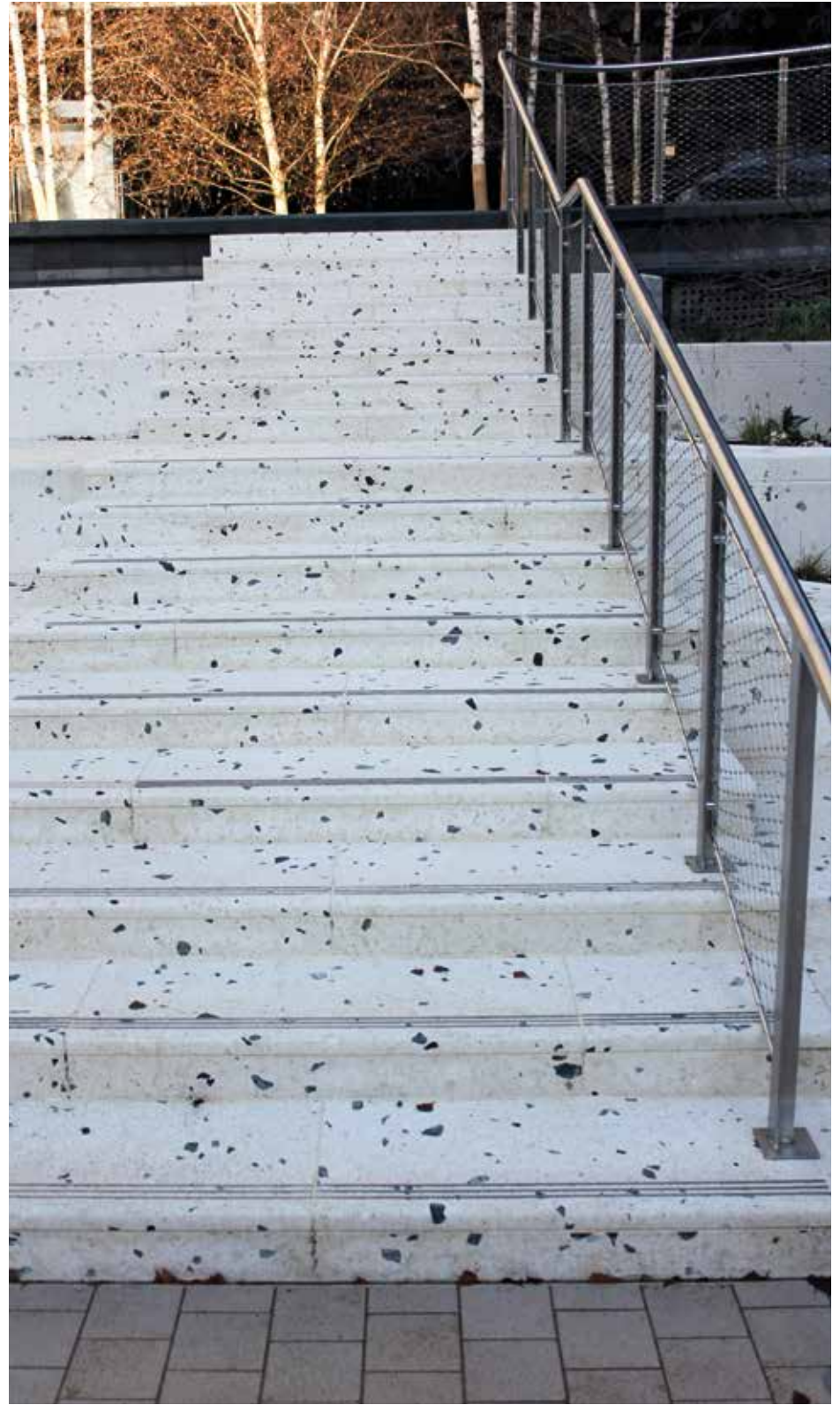
material

REG 3458

partner

In Opera Group







HOTEL PLATZHIRSCH KUFSTEIN AUSTRIA

material
REG 3784



RESIDENTIAL PROJECT

BELGIUM

material

SB 137 Sabbia

SB 138 Ghiaccio

partner

Stone









TERHILLS HOTEL

MAASMECHELEN, BELGIUM

material
SB 130 Aggloceppo

partner
Stone

GUCCI AMERICA

LAS VEGAS CRYSTALS

material

REG 5066

REG 5035

REG 5033







SHENZHEN TORISAWA

SHANGHAI



material

SB 260 Tronchetto

partner

Ideal Source

MIELE SHOP

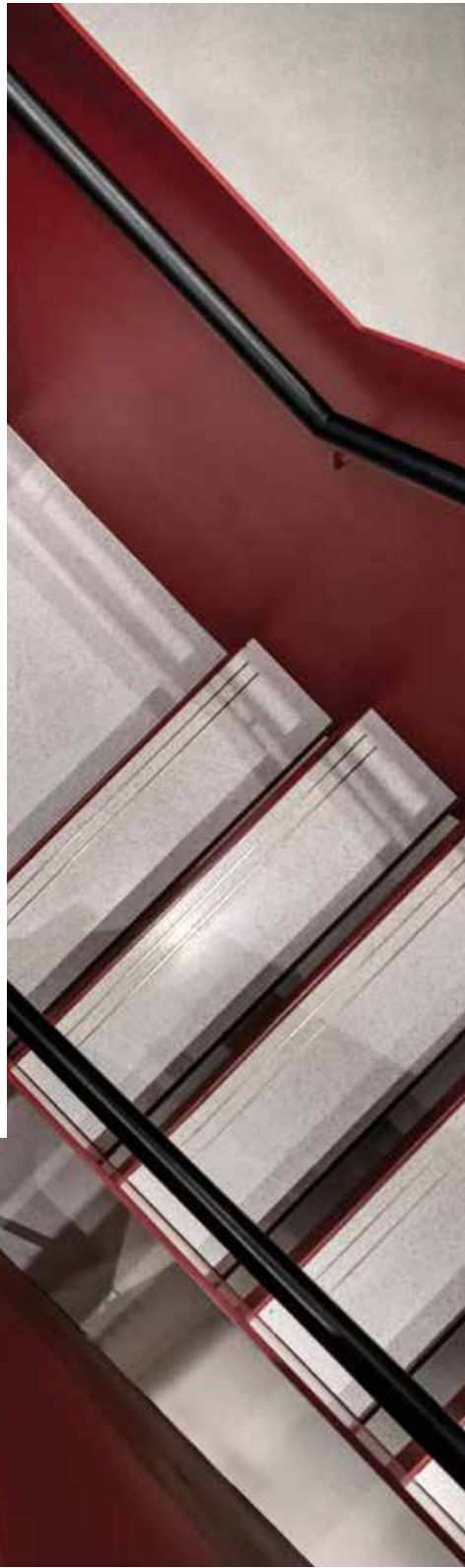
HERTZLIYA, ISRAEL

material

SB 102 Grigio Chiaro

partner

Parqueteam









PATCHI

DUBAI MALL

material
SB 143 Bianco Carrara

partner
Sensi

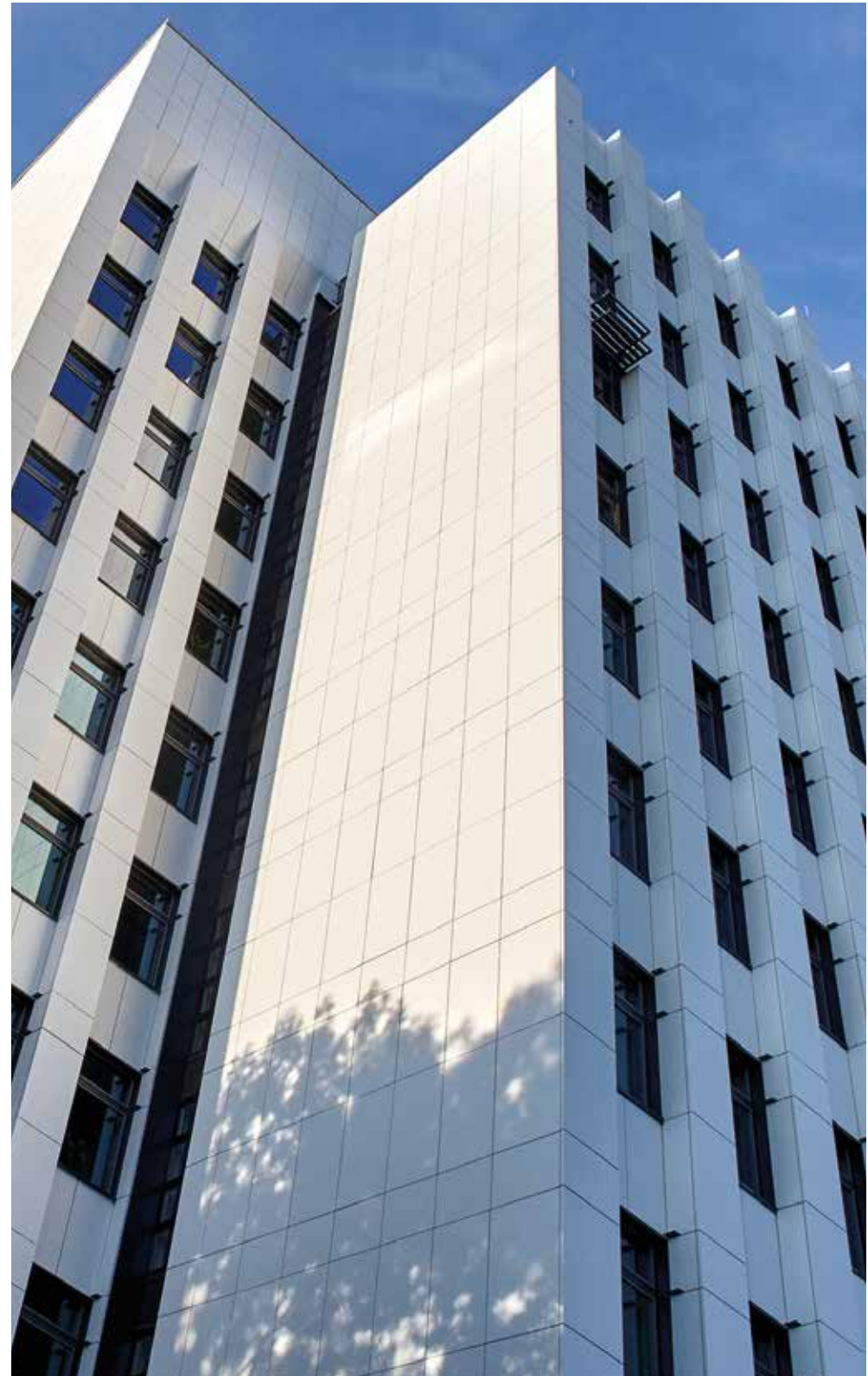


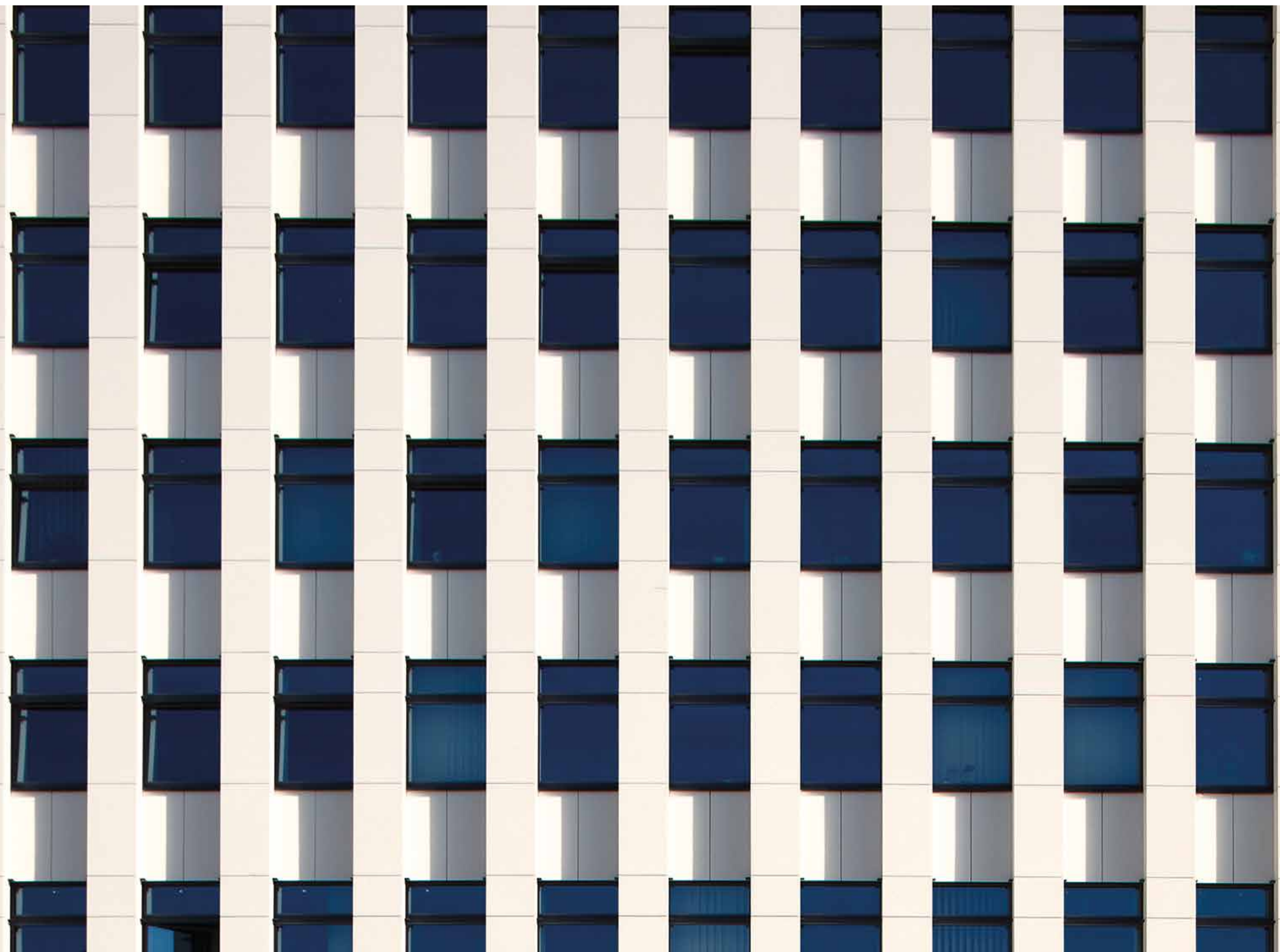
AM KNIE

MUNICH, GERMANY

material

SB 100 Bianco







LUNAR RESTAURANT

SHANGHAI

material
SB 130 Aggloceppo

partner
Ideal Source



OFFICE BUILDING

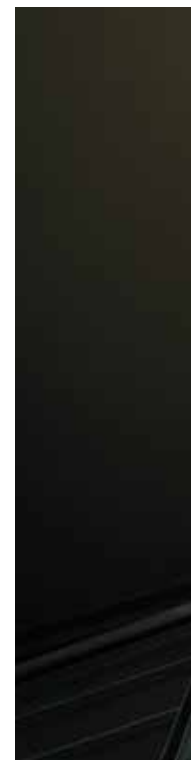
ROZZANO, ITALY

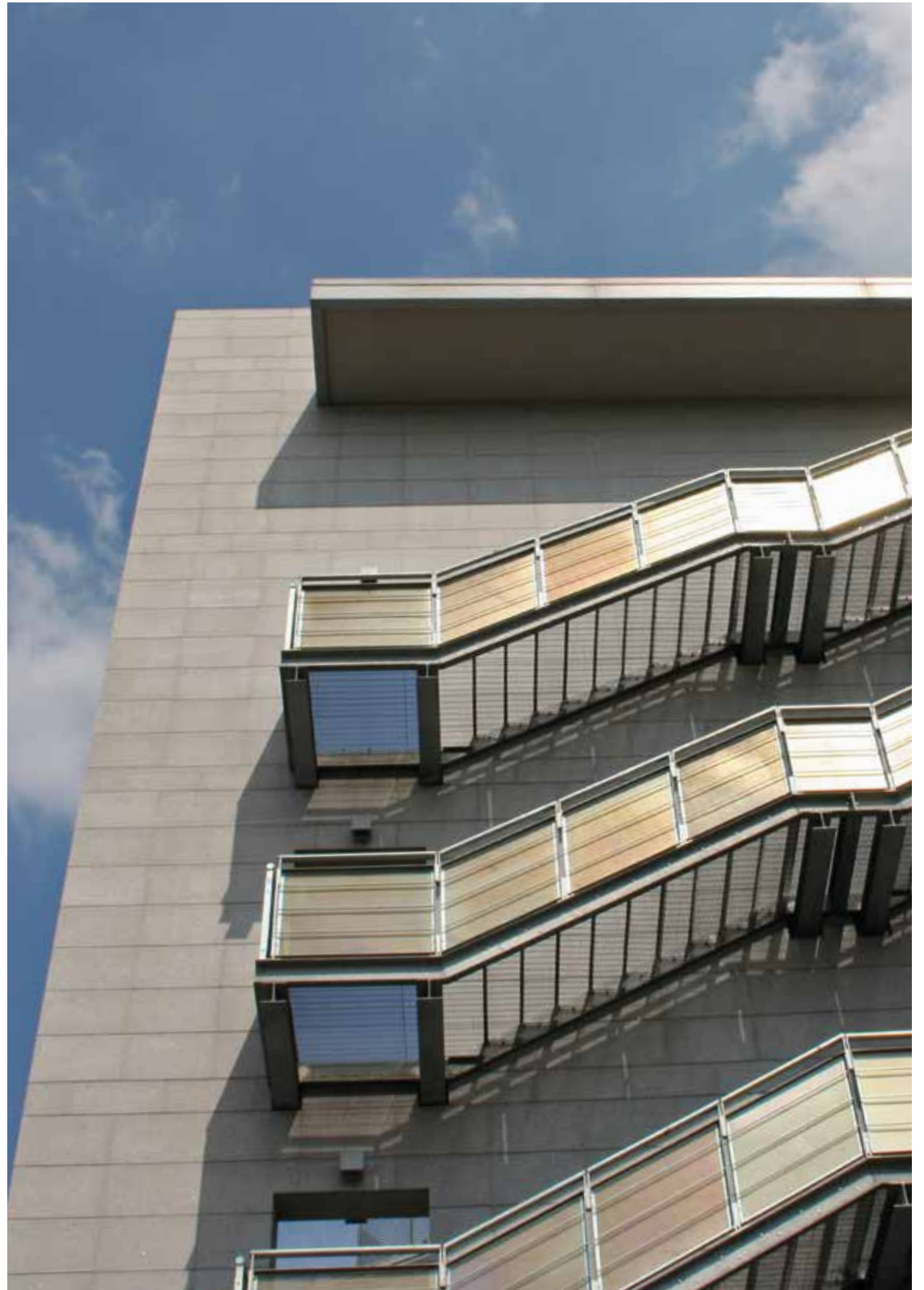
material

SB 130 Aggloceppo

partner

Marini Marmi







SAMSUNG SHOP

BERLIN



material

SB 500 Pietra Crema

SB 134 Crema

partner

Musch Fliesen

Natursteine GMBH

TATE BRITAIN

LONDON, UNITED KINGDOM

material

SB 178 Bianco Carrara 09

SB 106 Nero

REG 1420









RESTAURANT QUALITY CAVIAR

SWEDEN

material

SB 260 Tronchetto

partner

Svenk Terrazzo

CRELAN

BELGIUM

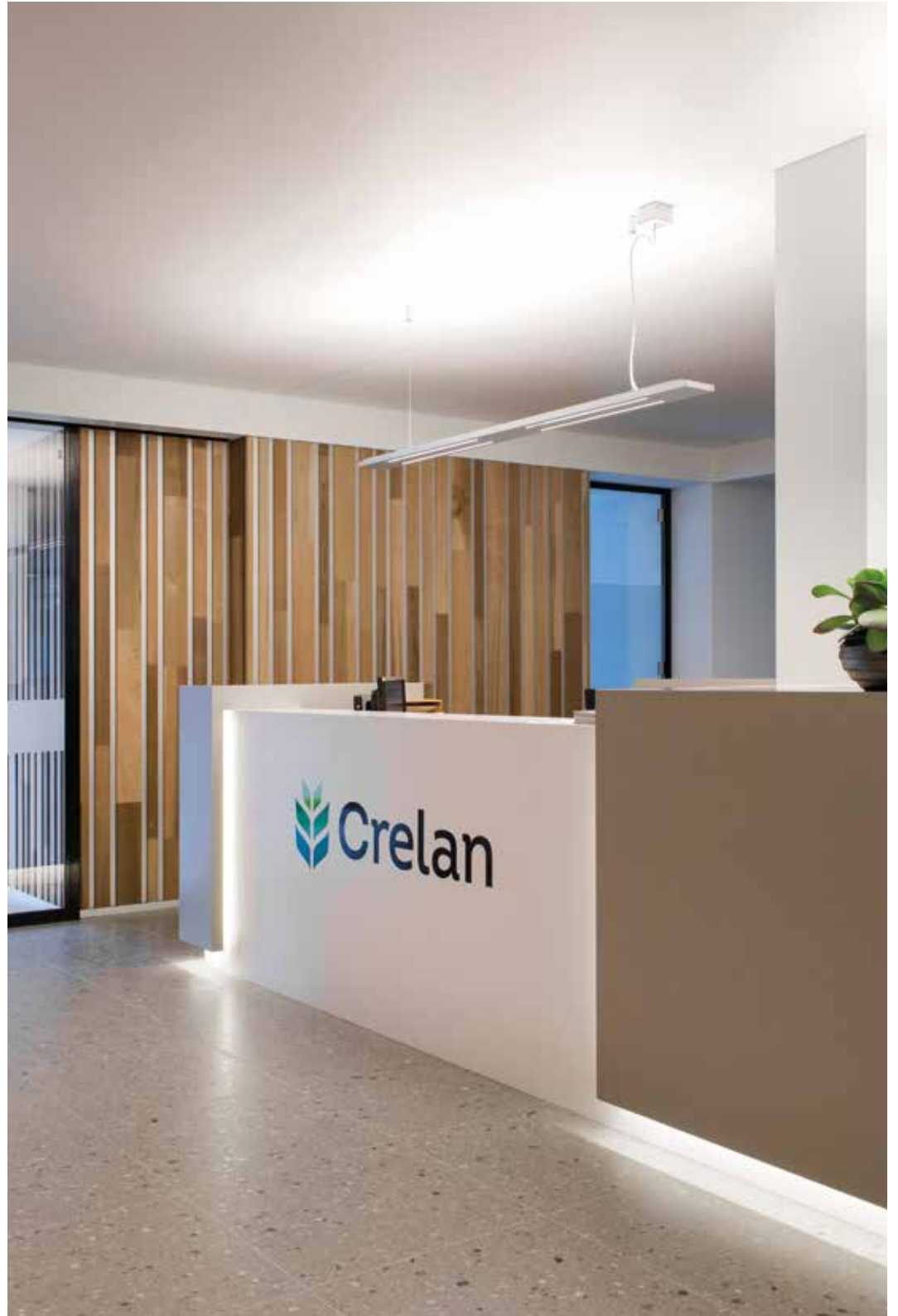
material

SB 130 Aggloceppo

partner

Stone







THE NOBILIA SHANGHAI HEADQUARTERS

SHANGHAI



material
SB 100 Bianco
SB 111 Verde

partner
Ideal Source



STUDIO DON PIETO

GADING SERPONG, TANGERANG
SELATAN, INDONESIA

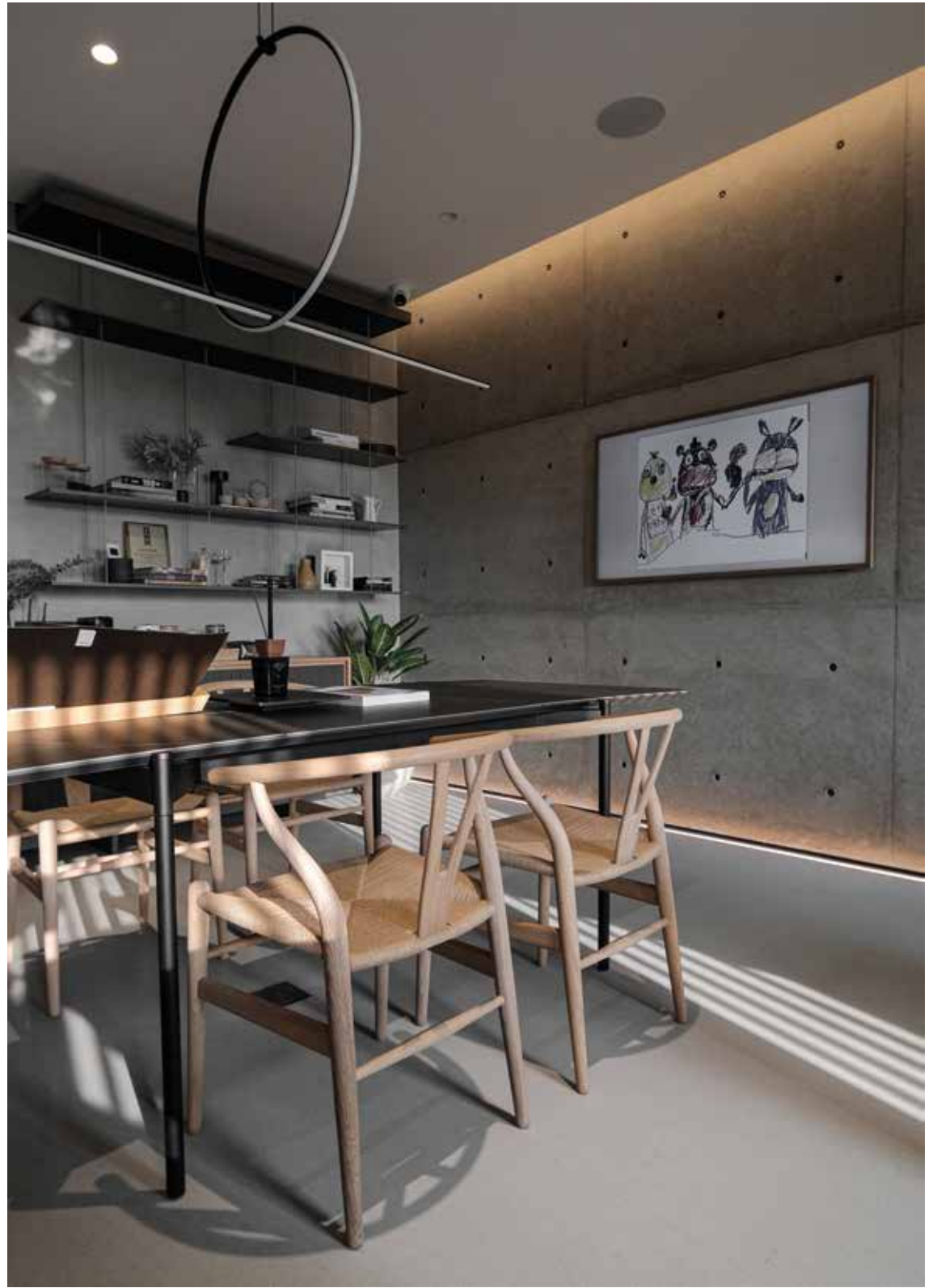
material

SB 139 Cenere

partner

MM Gallery







TIMES SQUARE

SHANGHAI, CHINA



material

SB 240 Torcello

SB 1000 Thassos

REG 3825 Custom colour

partner

Ideal Source

HP HEADQUARTER

SEOUL

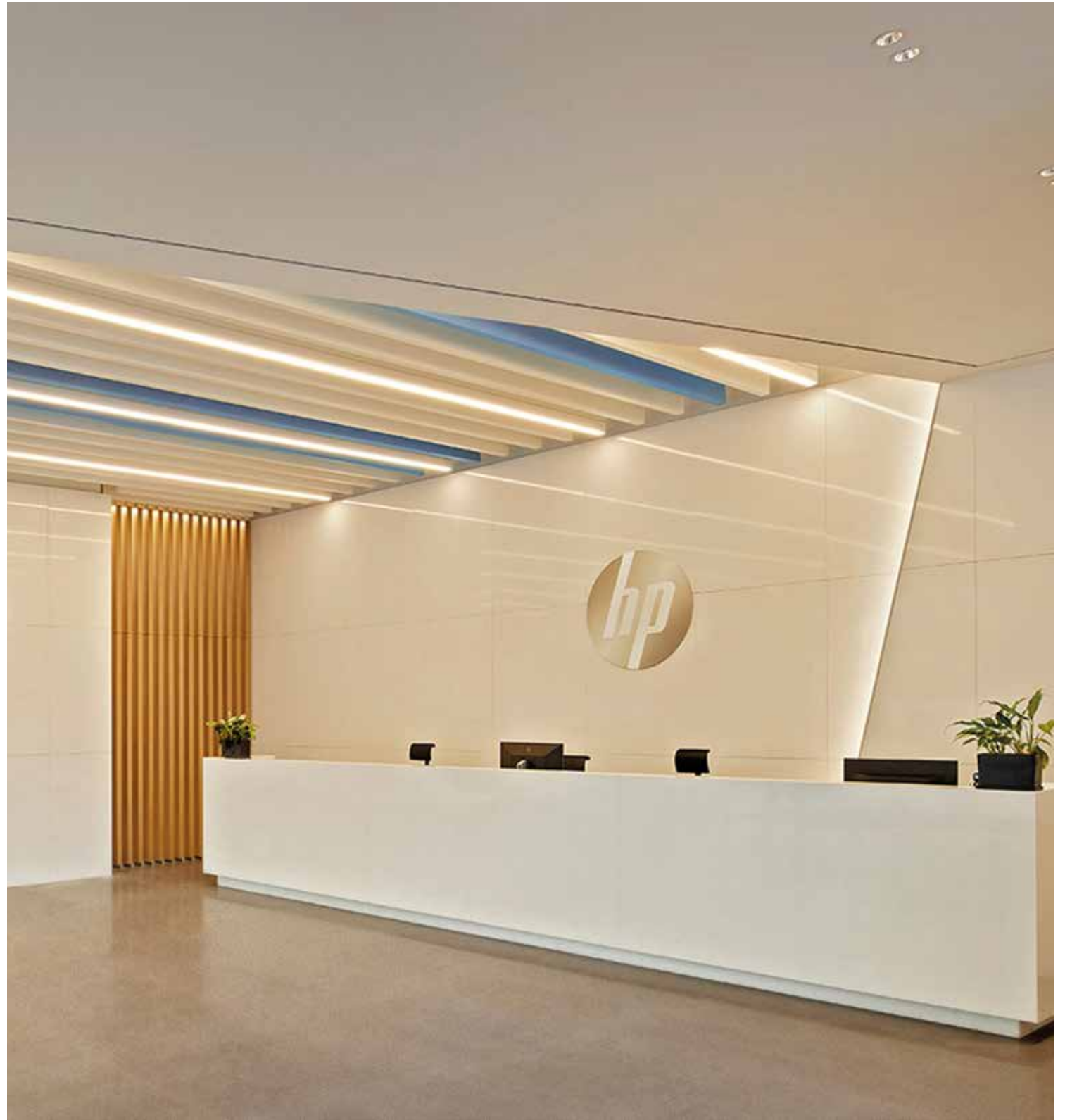
material

SB 148 Grafite

partner

Eclat Korea





material

LINEA UNICO CLASSICO

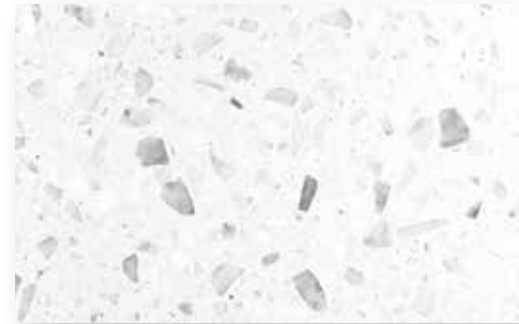
available finishes: HONED | POLISHED | BRUSHED | BUSH-HAMMERED | HONED R11



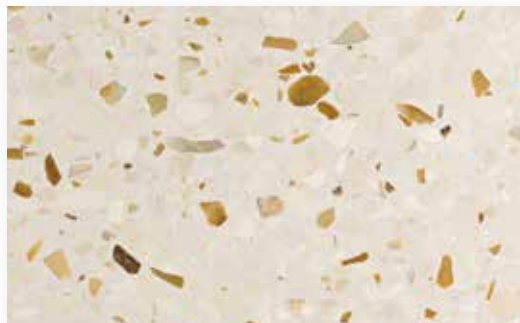
SB 100 Bianco



SB 178 Bianco Carrara 09



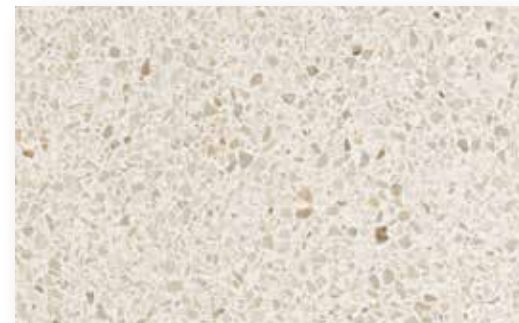
SB 143 Bianco Carrara 25



SB 140 Cà D'oro



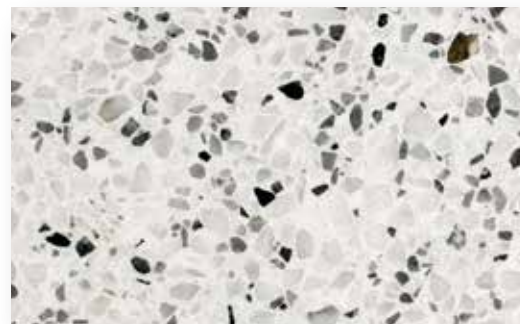
SB 173 Grigio Venato



SB 176 Botticino 09



SB 177 Botticino 25



SB 101 Pepe Sale



SB 170 Bianco Perla



SB 136 Bianco Verona



SB 134 Crema



SB 500 Pietra Crema



SB 108 Beige



SB 135 Rosa



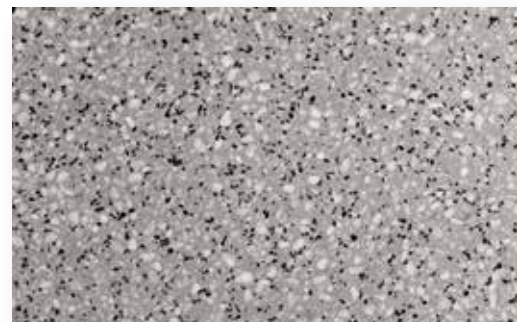
SB 102 Grigio Chiaro



SB 160 Grigio Carrara



SB 103 Grigio Medio



SB 119 Pepe Grigio

material

LINEA UNICO CLASSICO

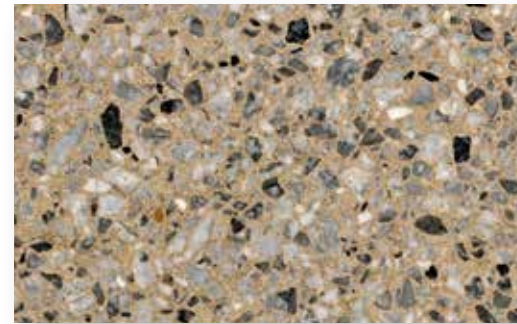
available finishes: HONED | POLISHED | BRUSHED | BUSH-HAMMERED | HONED R11



SB 172 Grigio Perla



SB 104 Grigio Scuro



SB 107 Grigio Marron



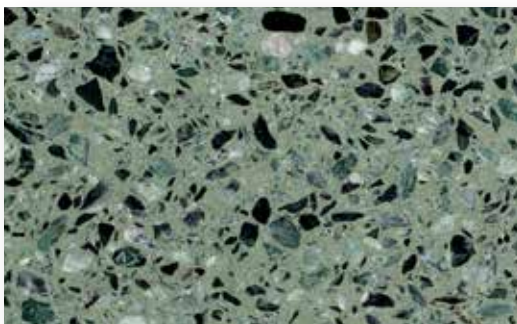
SB 109 Giallo



SB 141 Multicolor Verona



SB 115 Multicolor Verde



SB 111 Verde



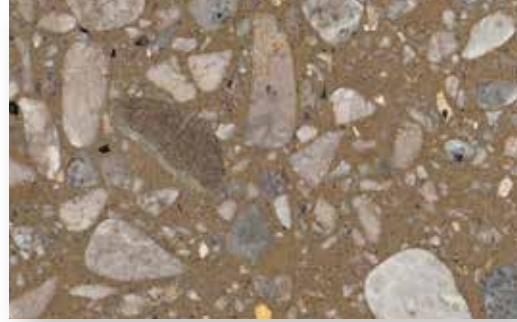
SB 174 Moncervetto



SB 124 Grigio Rotondo



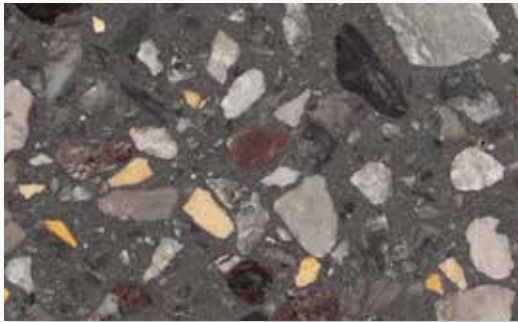
SB 121 Multicolor Chiaro



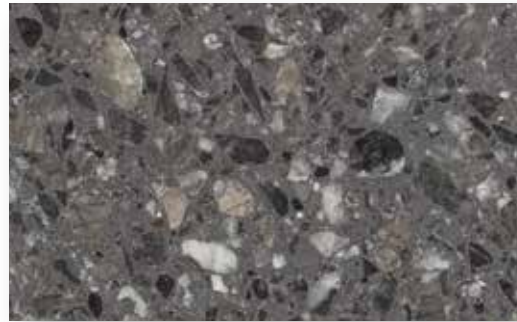
SB 125 Bruno Rotondo



SB 114 Multicolor Grigio



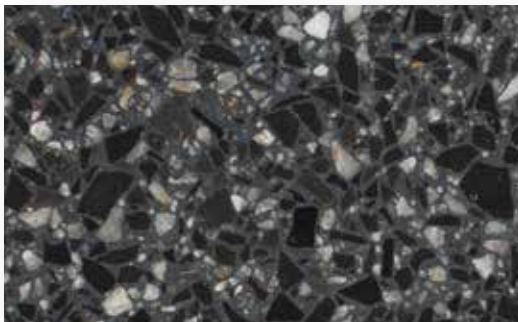
SB 113 Multicolor Nero



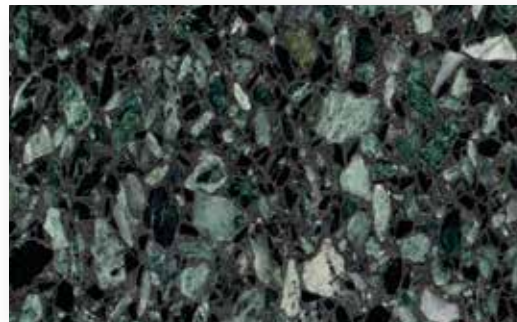
SB 105 Antracite



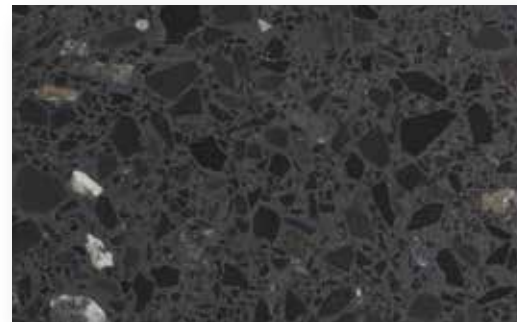
SB 128 Grigio Nero



SB 175 Nero Perla



SB 112 Verde Scuro

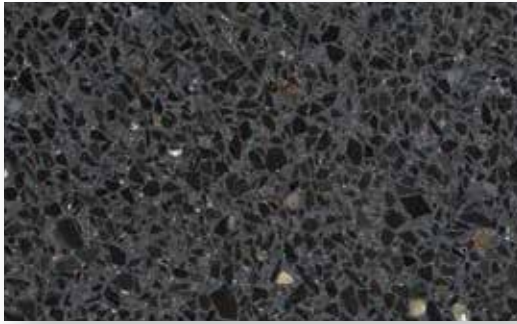


SB 171 Nero Venato

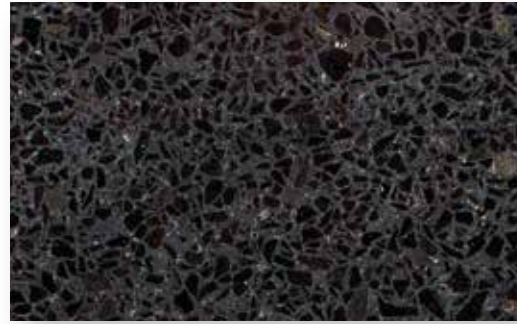
material

LINEA UNICO CLASSICO

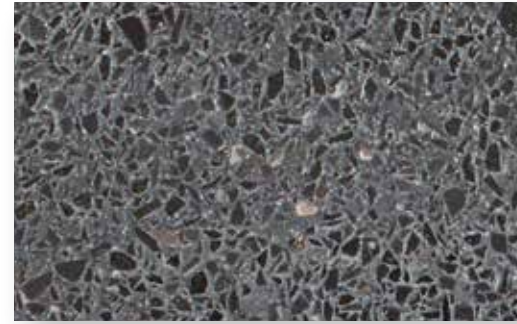
Finiture disponibili per tutti i materiali / Available finishing on all materials / Bearbeitung bei allen Colourien möglich



SB 106 Nero
spazzolato brushed gebürstet



SB 106 Nero
levigato honed geschliffen



SB 106 Nero
lucido polished poliert



SB 106 Nero
bocciardato bush-hammered gestockt

material

LINEE MICRO TERRAZZO

available finishes: HONED | POLISHED | BRUSHED | BUSH-HAMMERED | HONED R11



SB 1000 Thassos



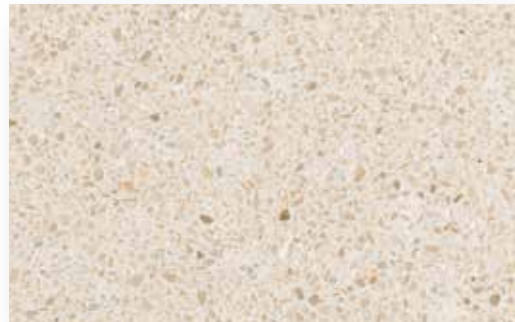
SB 138 Ghiaccio



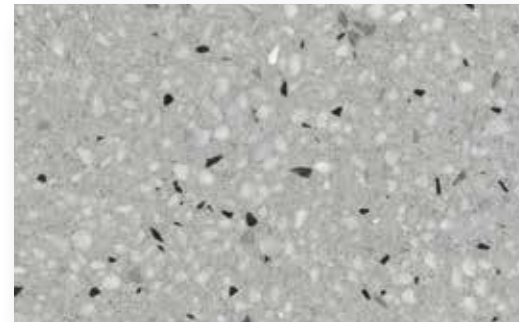
SB 150 Sale Pepe



SB 159 Ricotta



SB 144 Avorio



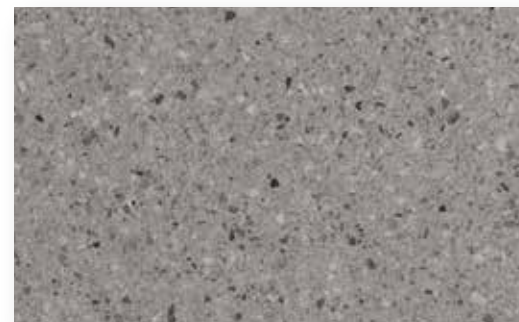
SB 129 Grigio Pepe



SB 139 Cenere



SB 149 Fumo



SB 151 Zinco

material

LINEA SEMINATO VENEZIANO

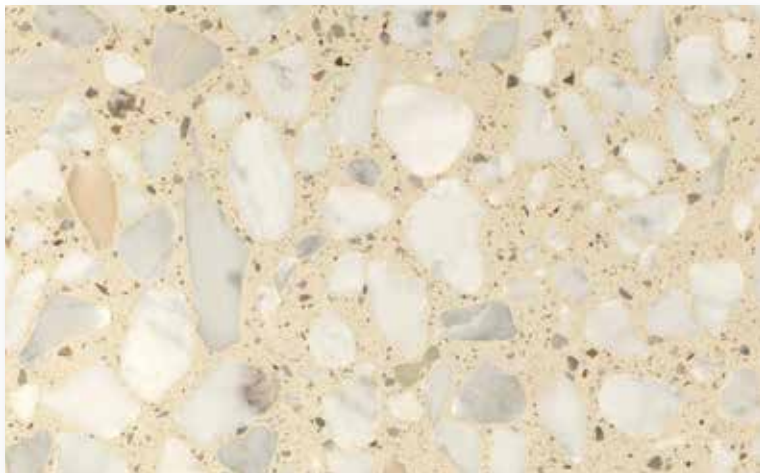
available finishes: HONED | POLISHED | BRUSHED | BUSH-HAMMERED | HONED R11



SB 250 Lido



SB 210 Murano



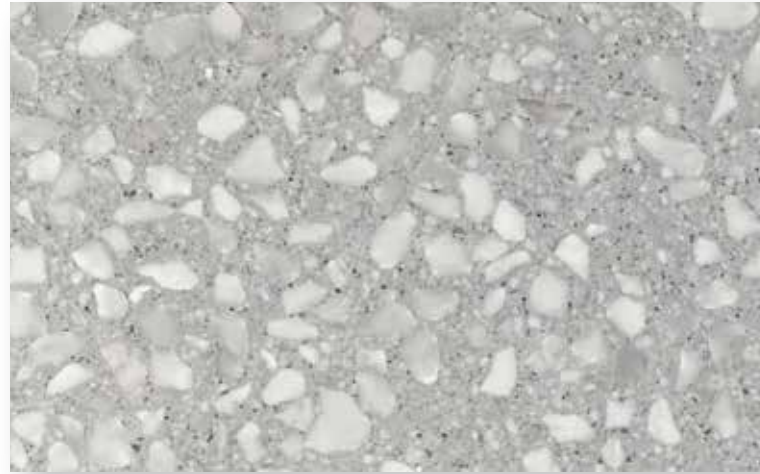
SB 230 Pellestrina



SB 290 Calacatta



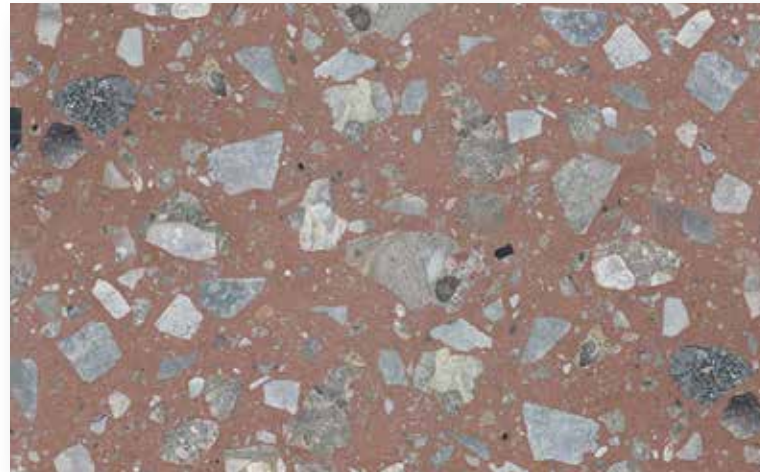
SB 280 Campalto



SB 240 Torcello



SB 220 Giudecca

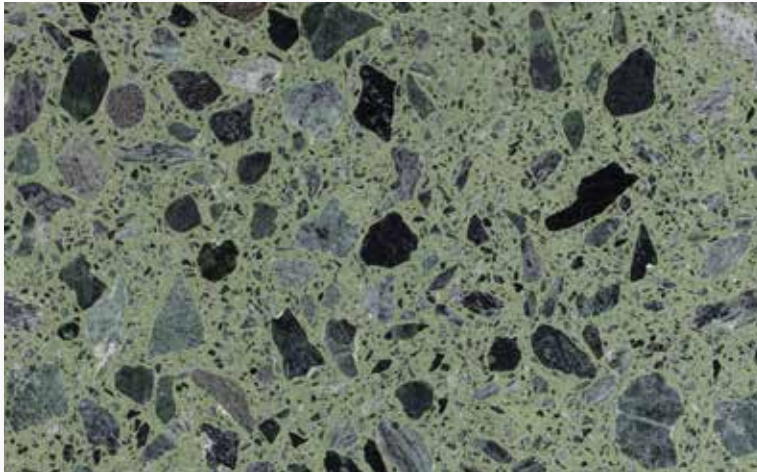


SB 300 Chioggia

material

LINEA SEMINATO VENEZIANO

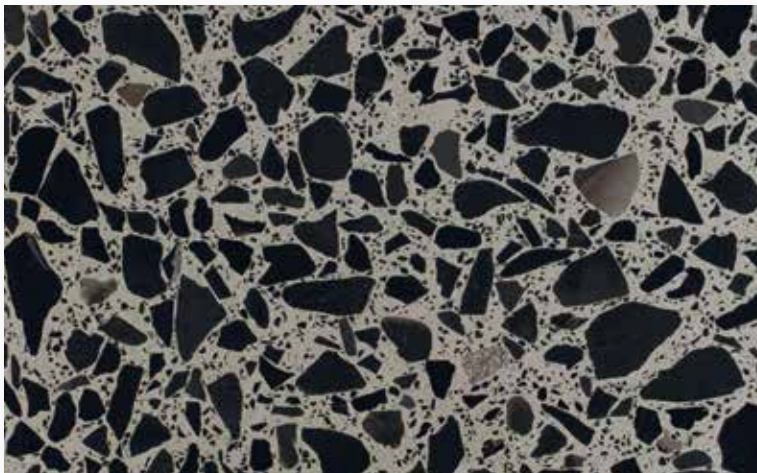
available finishes: HONED | POLISHED | BRUSHED | BUSH-HAMMERED | HONED R11



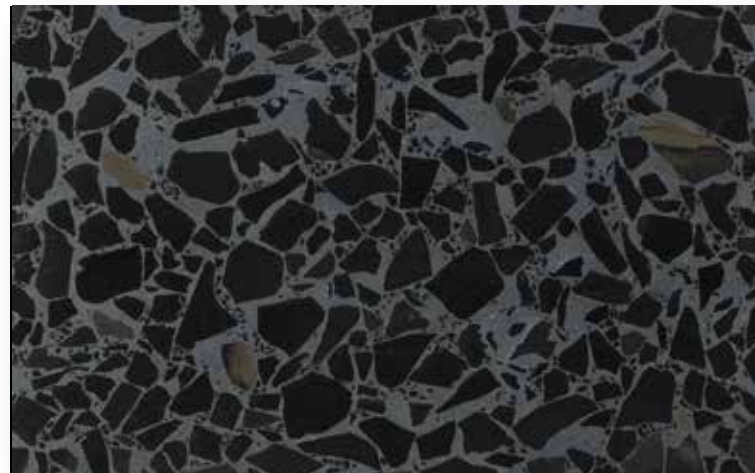
SB 270 Mazzorbo



SB 130 Aggloceppo



SB 260 Tronchetto



SB 200 Burano

Finiture disponibili per tutti i materiali / Available finishing on all materials / Bearbeitung bei allen Colourien möglich



SB 130 Aggloceppo
spazzolato brushed gebürstet



SB 130 Aggloceppo
levigato honed geschliffen



SB 130 Aggloceppo
lucido polished poliert



SB 130 Aggloceppo
bocciardato bush-hammered gestockt



SB 130 Aggloceppo
levigato R11 honed R11 geschliffen R11

material

LINEE MICRO TERRAZZO

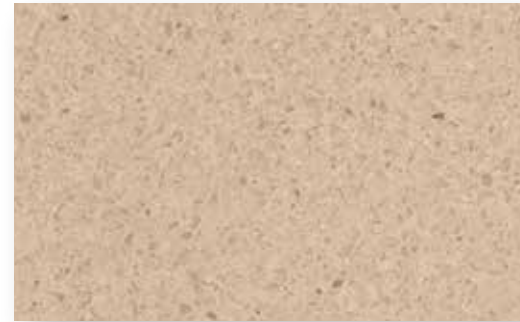
available finishes: HONED | POLISHED | BRUSHED | BUSH-HAMMERED | HONED R11



SB 148 Grafite



SB 158 Acquamarina



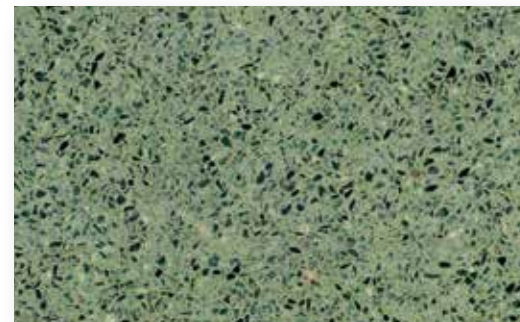
SB 137 Sabbia



SB 153 Ecrú



SB 154 Cappuccino



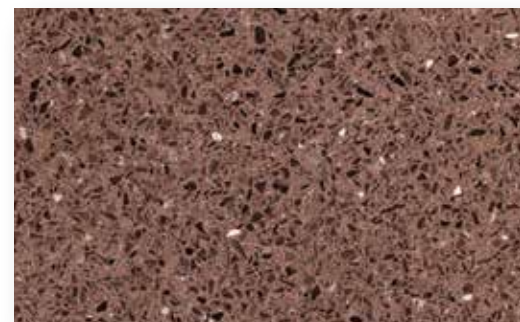
SB 157 Smeraldo



SB 156 Zafferano

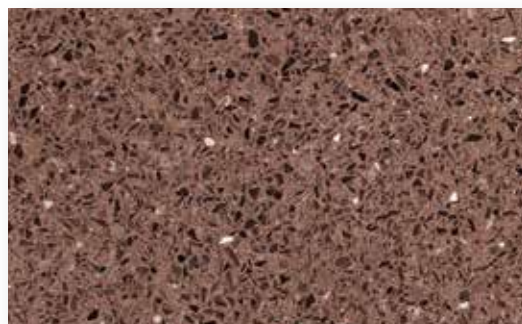


SB 155 Terracotta

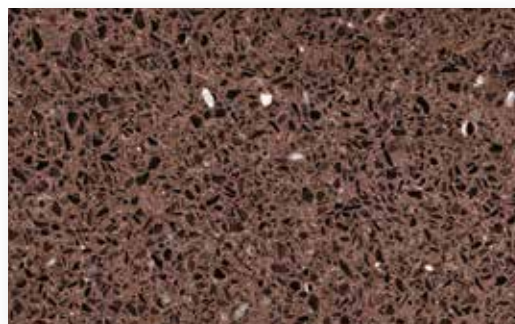


SB 147 Mogano

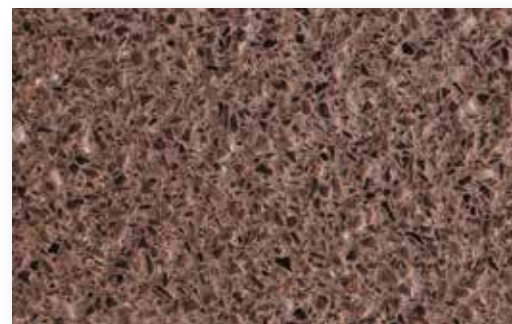
Finiture disponibili per tutti i materiali / Available finishing on all materials / Bearbeitung bei allen Colourien möglich



SB 147 Mogano
levigato honed geschliffen



SB 147 Mogano
lucido polished poliert



SB 147 Mogano
spazzolato brushed gebürstet

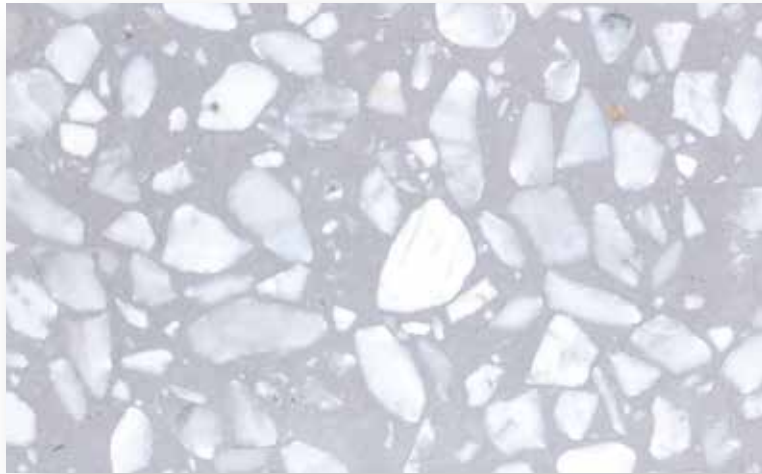


SB 147 Mogano
bocciardato bush-hammered gestockt

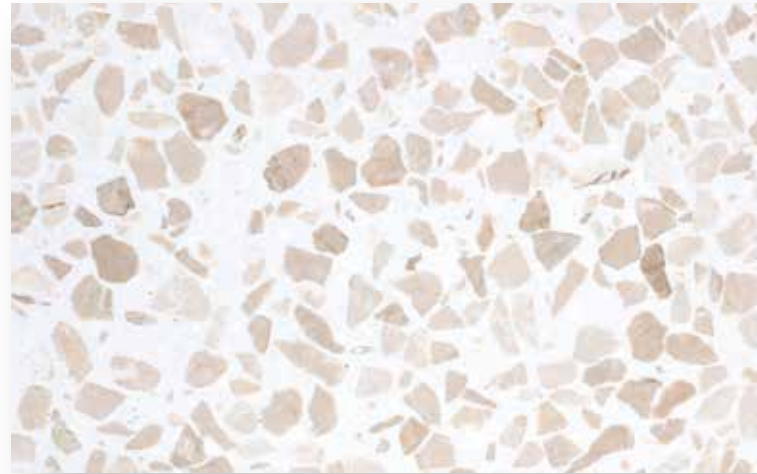
material

NEW COLOURS

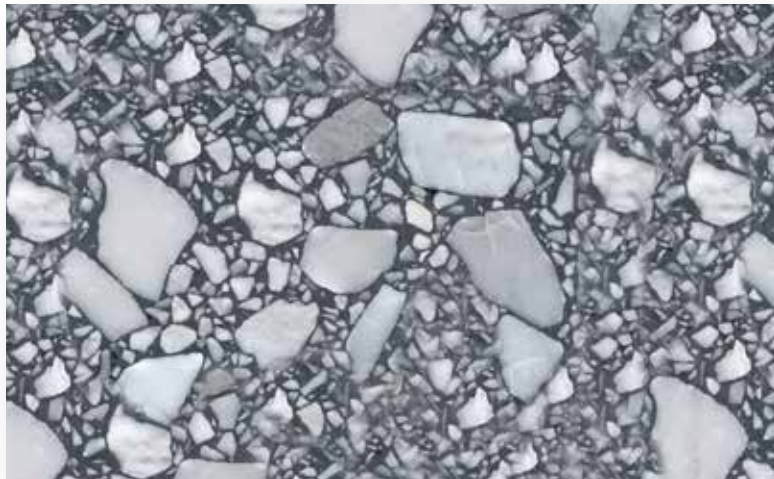
available finishes: HONED | POLISHED | BRUSHED | BUSH-HAMMERED | HONED R11



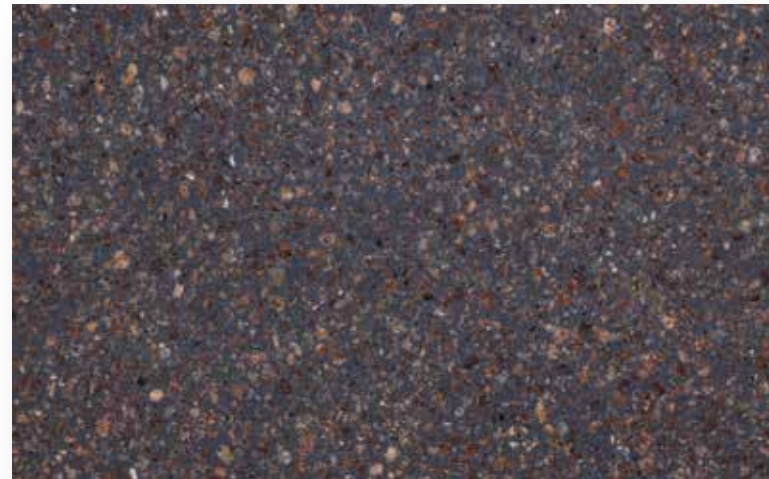
REG 4502 Lido Grey



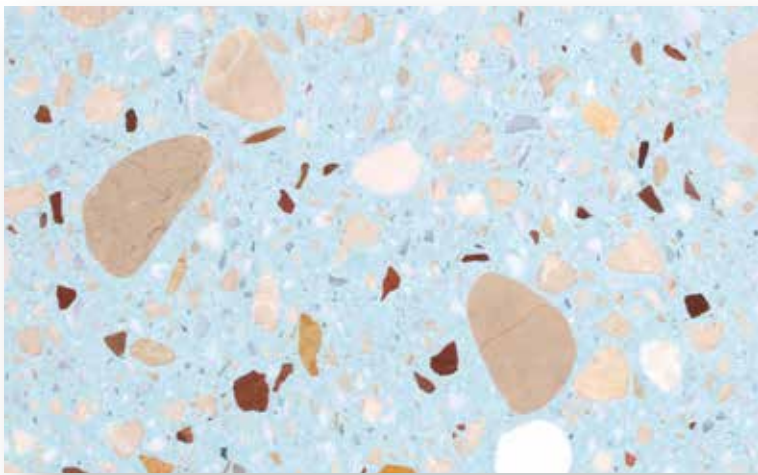
REG 4681 Botticino Pure



REG 2718 Lido Black



REG 4778 Porfido



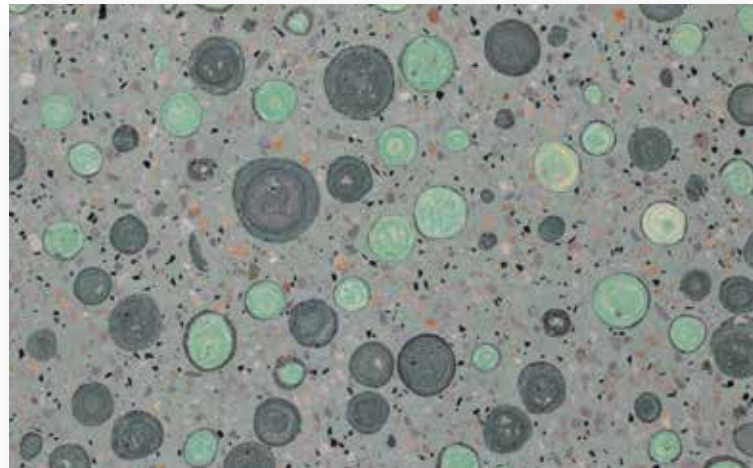
REG 4390 Blue Sky



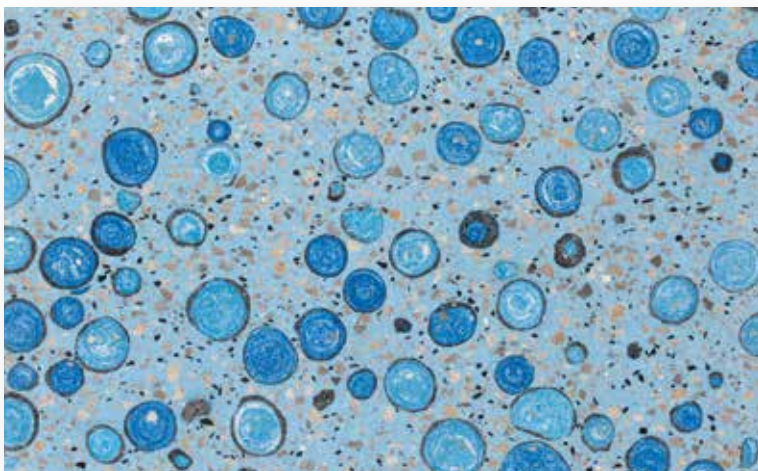
REG 5829 Carrara XL



REG 5094 Aggloceppo Light



REG 1814 Green Bubble



REG 2630 Blue Bubble



REG 5088 Rosa Corallo





AGGLOTECH coniuga tradizione e innovazione con un materiale che mette tutti d'accordo. Tagliato in lastre derivanti da un unico blocco, Architectural Terrazzo è personalizzabile e adattabile alle esigenze di stile di progettisti e committenti che nel corso degli anni hanno arricchito la gamma colori con più di 6.000 tipologie di Terrazzo.

L'attenzione per l'universo Green, il costante investimento in nuovi impianti e le grandi capacità produttive hanno reso AGGLOTECH il partner ideale per i grandi progetti.

L'inarrestabile ricerca tecnologica e l'attenzione per l'innovazione garantiscono ad AGGLOTECH un magazzino di 9.000 m³ di blocchi a disposizione assicurando consegne veloci e puntuali.

AGGLOTECH combines both tradition and innovation for a product that meets your every need. Cut into slabs from blocks of material, Architectural Terrazzo can be customized to suit your specific designs, and over the years we have developed a range of colors that encompasses more than 6,000 types of Terrazzo.

Our focus on the environment, constant investment in new equipment, and vast production capacity has made AGGLOTECH the ideal partner for projects large and small.

Our incessant research and commitment to innovation have enabled us to amass a stock of 9,000 m³ of Terrazzo blocks, so you get fast, timely delivery.

AGGLOTECH vereint Tradition und Innovation in einem Material, das allen Ansprüchen gerecht wird.

In Platten gesägt, die aus einem einzigen Block gewonnen werden, lässt sich Architectural Terrazzo individuell gestalten und den stilistischen Bedürfnissen von Planern und Auftraggebern anpassen, die die Farbpalette im Lauf der Jahre mit mehr als 6000 Terrazzo-Schattierungen bereicherten.

Dank des Werts, den das Unternehmen der Umwelt beimisst, sowie der kontinuierlichen Investitionen in neue Anlagen und hohe Produktionsleistungen ist AGGLOTECH der optimale Partner für Großprojekte.

Kontinuierliche technologische Forschung und innovationsorientiertes Handeln garantieren Agglotech einen verfügbaren Lagerbestand von 9000 m³ Terrazzo-Blöcken, was schnelle und fristgerechte Lieferungen gewährleistet.









SVILUPPO TECNOLOGICO

DEVELOPMENT OF TECHNOLOGY

TECHNOLOGISCHE ENTWICKLUNG

In un mercato in forte evoluzione, AGGLOTECH rinforza il suo sviluppo tecnologico con la recente introduzione di due nuovi impianti all'avanguardia negli stabilimenti di Grezzana e Marzana: il primo dedicato alla produzione di blocchi, il secondo alla lucidatura e al trattamento delle lastre, assicurando materiali cromaticamente omogenei, resistenti, a basso assorbimento d'acqua e dilatazione termica.

Ricerca e sviluppo sono condizioni imprescindibili per collegare il presente dell'azienda a un futuro sostenibile, sfruttando consapevolmente le risorse a disposizione.

In today's rapidly evolving marketplace, we have strengthened our development of technology with the recent introduction of two, cutting-edge systems at our AGGLOTECH plants in Grezzana and Marzana. One is dedicated to block production, while the other is for polishing and finishing slabs to produce terrazzo that gives you consistent color, high levels of resistance, and low levels of water absorption and thermal expansion. Research and development is fundamental in leading the company into a more sustainable future in which we make responsible use of the resources available to us.

In einem Markt, der sich unablässig weiterentwickelt, stärkte AGGLOTECH erst kürzlich sein Technologiepotenzial mit der Einführung zweier neuer Hightech-Anlagen: Die erste dient der Herstellung von Blöcken im Werk in Grezzana, die zweite in Marzara dem Polieren und Behandeln von Platten, wodurch farblich einheitliche und widerstandsfähige Materialien mit geringer Wasseraufnahme und niedriger Wärmeausdehnung gewährleistet werden. Forschung und Entwicklung sind unerlässliche Voraussetzungen, um die Gegenwart des Unternehmens mit einer nachhaltigen Zukunft zu verknüpfen, indem die verfügbaren Ressourcen bewusst genutzt werden.









ARCHITECTURAL TERRAZZO

Architectural Terrazzo di AGGLOTECH è una pietra ricomposta, la perfetta miscela di elementi di origine naturale: graniglie di marmo, cemento Portland e acqua.

L'intero processo produttivo e i materiali finiti sono controllati e certificati da ispezioni del laboratorio LGA di Norimberga, secondo la normativa EN 13748. LGA verifica il rispetto delle procedure di controllo della qualità e la corretta compilazione dei registri (con successiva archiviazione in azienda per i successivi cinque anni).

Da ogni lotto produttivo AGGLOTECH preleva alcuni campioni per testarne in laboratorio la resistenza alla flessione e all'abrasione, l'assorbimento d'acqua e la resistenza al gelo. I controlli proseguono anche sui lavorati finiti con misurazioni a campione volte a verificare la precisione dei tagli.

I prodotti AGGLOTECH soddisfano tutti gli standard normativi e ambientali vigenti.

AGGLOTECH Architectural Terrazzo is a recomposed stone that is the result of a perfect combination of all-natural ingredients, namely marble chips, Portland cement and water. The finished material and the entire production process are both controlled and certified by LGA, based in Nuremberg, to meet the EN 13748 standard. LGA also verifies our quality control processes and the proper maintenance of our production logs (which are kept on file for five years).

We take samples from every batch of blocks produced in order to conduct tests in our in-house lab to ensure proper flex resistance, scratch resistance, water absorption, and freeze resistance. Quality control is also conducted on the finished product by way of sample measurements in order to ensure cut precision.

AGGLOTECH products comply with all applicable environmental and quality standards.

AGGLOTECH-Terrazzo von AGGLOTECH ist ein Kunststein und das Ergebnis einer vollendeten Mischung ausschließlich natürlicher Elemente: Marmorsplitt, Portlandzement und Wasser.

Der gesamte Produktionsprozess und die fertigen Materialien werden durch Inspektionen des Prüfinstituts LGA in Nürnberg nach EN 13748 geprüft und zertifiziert. LGA prüft die Einhaltung der Verfahren zur Qualitätskontrolle und die korrekte Erstellung der Prüfprotokolle (die anschließend für die nächsten fünf Jahre im Unternehmen archiviert werden).

Jeder Partie entnimmt AGGLOTECH Proben, deren Biege- und Abriebfestigkeit, Wasseraufnahmefähigkeit und Frostbeständigkeit im Labor getestet werden. Die Kontrollen erstrecken sich auch auf die Fertigprodukte durch Prüfung der Maßhaltigkeit und Schnittpräzision.

AGGLOTECH-Produkte erfüllen alle geltenden Rechts- und Umweltvorschriften.





INFORMAZIONI TECNICHE E DI PRODOTTO

TECHNICAL AND PRODUCT INFORMATION

TECHNISCHE UND PRODUKTBEZOGENE INFORMATIONEN



Monostrato Massive product Massiv



Ecologico Natural product Ökologisch



Alta resistenza Highly resistant Sehr resistent












Uniforme Uniform Homogen



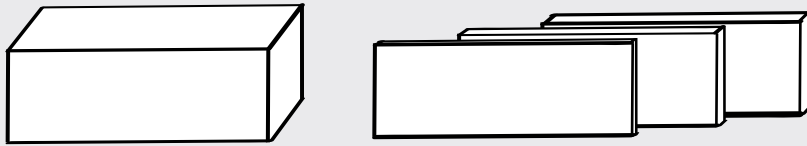
Facile da installare Simple to install Einfache Verlegung



Facile da mantenere Easy to maintain Pflegeleicht

CARATTERISTICHE TECNICHE / TECHNICAL DATA / TECHNISCHE DATEN	NORMA / NORM EN13748-1	TESTATO LGA LGA TESTED / LGA-GETESTET
 Resistenza all'abrasione Resistance to Abrasion / Schleifverschleiss	< 30 cm ³ /50 cm ³	Ø < 20 cm ³ / 50 cm ³
 Assorbimento d'acqua Water Absorption / Wasseraufnahme	M-% < 8	M-% < 5
 Resistenza alla flessione Flexural Strength / Biegezugfestigkeit	N/mm ² > 5	N/mm ² > 8
 Resistenza alla compressione Resistance to Compression / Druckfestigkeit	N/mm ² > 30	N/mm ² > 70
 Carico di rottura Breaking load / Bruchlast	KN > 2,5	KN > 3,0
 Peso specifico Density / Rohdichte	-	2,40 g/cm ³
 Resistenza allo scivolamento Slippage Resistance / Rutschwiderstand	> 6° (R9)	> 8°
 Resistenza al fuoco Fire Resistance / Brandverhalten	A1 _{fl}	A1 _{fl} non infiammabile fire resistant / nicht brennbar
 Resistenza al gelo Frost Resistance / Witterungs - Beständig	-	Klasse 2/B - 3/D

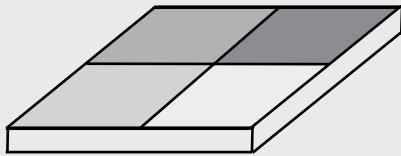
MISURE E PESI / SIZES AND WEIGHTS / MASSE UND GEWICHTE



Blocchi Blocks Blöcke
253/142/80 cm 7,5 tons

Lastre Slabs Rohplatten
253/142/2 cm 52 kg/m²
253/142/2,5 cm 65 kg/m²
253/142/3 cm 78 kg/m²
253/142/4 cm 104 kg/m²

FINITURE / SURFACE FINISHING / OBERFLÄCHENBEARBEITUNG

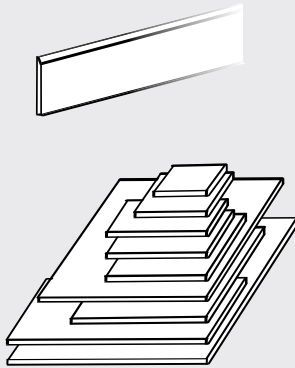


superficie impregnata antimacchia
impregnated antistain surface
Imprägnierte Oberfläche

levigato / honed / geschliffen	R9
levigato / honed / geschliffen	R10
levigato / honed / geschliffen	R11
spazzolato / brushed / gebürstet	R9 / R10
bocciardato / bush-hammered / feingestockt	R11 / R12
lucido / polished / poliert	

PAVIMENTI / TILES / BODEN

Formati standard - calibrati - non bisellati
Standard sizes - calibrated - not bevelled
Standardformate - kalibriert - ungefaste
Kanten

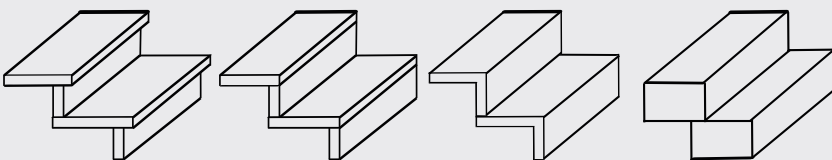


FORMATO	SPESSORE		
	2 cm	2,5 cm	3 cm
30 x 30	✓	✓	✓
60 x 30	✓	✓	✓
40 x 40	✓	✓	✓
60 x 40	✓	✓	✓
80 x 40	✓	✓	✓
80 x 60	✓	✓	✓
60 x 60	✓	✓	✓
120 x 60		✓	✓
120 x 80		✓	✓
120 x 120			✓

Zoccolino Skirting Sockel

Standard 60/7/1,2 cm, costa levigata + smussata, formati speciali su richiesta
Standard 60/7/1,2 cm, honed + bevelled edge, special sizes on request
Standard 60/7/1,2 cm, Kante geschliffen + gefast, Sonderformate auf Anfrage

LAVORATI / CUT TO SIZE / FERTIGWARE



Pedate Treads Trittstufen
Alzate Risers Setzstufen

perfettamente incollati
perfect bonded perfekt geklebt

Davanzali Window sills Fensterbänke
Facciate Claddings Fassaden

FACCIAE VENTILATE (tecnologia Fischer)

REAR-VENTILATED RAINSCREENS (Fischer technology)

HINTERLÜFTETE FASSADEN (Fischer-Technologie)

Architectural Terrazzo di AGGLOTECH è particolarmente adatto al rivestimento degli edifici con la tecnica delle facciate ventilate con sistema brevettato Fischer. Oltre a tutti i vantaggi offerti dalla tecnologia di montaggio garantisce infatti:

- omogeneità cromatica sulle grandi superfici
- resistenza nei punti di ancoraggio
- resistenza ai raggi UV
- consegne rapide.

AGGLOTECH Architectural Terrazzo is particularly suited to use on the outside of buildings as rear-ventilated rainscreens using the patented Fischer system. In addition to the benefits intrinsic to this technique, the use of our terrazzo also gives you:

- consistency of color over large surfaces
- strength at the anchor points
- UV resistance
- fast delivery.

Architectural Terrazzo von AGGLOTECH eignet sich besonders für die Verkleidung von Gebäuden mit der Technik der hinterlüfteten Fassaden mit dem patentierten Fischer-System. Außer allen von der Montagetechnik gebotenen Vorteilen garantiert das Produkt zudem:

- farbliche Einheitlichkeit großer Flächen;
- Festigkeit an den Befestigungsstellen;
- UV-Beständigkeit;
- schnelle Lieferung.



SCOPRI LA NOSTRA COLLA

DISCOVER OUR ADHESIVE

ENTDECKEN SIE UNSEREN KLEBER

AGGLOFIX[®]S2
by **AGGLOTECH[®]**



L'unica sul mercato pensata appositamente per il Terrazzo
The only one on the market specially designed for Terrazzo
Der einzige am Markt, der exklusiv auf die Eigenschaften von Terrazzo abgestimmt wurde

Notevoli qualità elastiche e facilità di posa
Extremely deformable and easy to use
Bemerkenswerte elastische Eigenschaften und einfacher Gebrauch

Lungo tempo aperto (più di 30 minuti) e ampi tempi di registrazione
Long open time (more than 30 minutes) and high adjustment times
Lange Offenzeit (über 30 Minuten) und ausreichende Korrekturzeit



Ottima lavorabilità anche in condizioni particolarmente critiche
Excellent workability even under particularly critical conditions
Gute Verarbeitbarkeit auch unter schwierigen Bedingungen

Marcatura CE (EN 12004)
CE marking (EN 12004)
CE-Kennzeichen (EN 12004)



Tecnicamente, AGGLOFIX S2 è un adesivo in polvere di colore bianco a base di cementi ad alta resistenza meccanica, fortemente additivato con resine sintetiche elasticizzanti e additivi speciali che lo rendono altamente deformabile (S2) se sollecitato meccanicamente.

AGGLOFIX S2 is a white powder adhesive, based on high mechanical strength cement and including large amounts of elasticizing synthetic resins and special additives, making it highly deformable (S2) under mechanical stress.

Technisch gesehen ist AGGLOFIX S2 ein weißer zementhaltiger Pulverkleber mit hoher mechanischer Festigkeit. Der hohe Anteil an Kunstharzen und die speziellen Zusatzstoffe sorgen für Elastizität und hohe Verformbarkeit (S2) bei mechanischer Belastung.



CERTIFICAZIONI CERTIFICATIONS ZERTIFIZIERUNGEN



TERRAZZO DA BLOCCO SECONDO EN 13478 - TESTATO E CERTIFICATO DA LGA
BLOCK-TERRAZZO ACCORDING TO EN 13478 - TESTED AND CERTIFIED BY LGA
BLOCKTERRAZZO NACH EN 13748 – GEPRÜFT UND ZERTIFIZIERT VON DER LGA

Architectural Terrazzo di AGGLOTECH è un materiale da costruzione di alta qualità particolarmente resistente e adatto a superfici soggette a elevate sollecitazioni e usura.

I certificati tecnici presentano valori eccellenti, tali da superare largamente i requisiti della norma EN 13748.

Il ciclo produttivo e i materiali sono costantemente controllati dal laboratorio LGA Bautechnik di Norimberga.

Il marchio CE su tutti i prodotti di AGGLOTECH certifica la loro conformità alle disposizioni comunitarie previste. In particolare, indica che il prodotto è stato soggetto a valutazione specifica prima dell'immissione sul mercato e che risponde ai requisiti dell'Unione Europea in materia di sicurezza, salute e protezione ambientale.

Gli standard LEED® (Leadership in Energy and Environmental Design) sono parametri per l'edilizia sostenibile, sviluppati negli Stati Uniti e applicati in 40 Paesi del mondo. Elaborati dallo US Green Building Council con la collaborazione di imprese e di ricercatori delle università statunitensi e canadesi, indicano i requisiti per costruire edifici eco-compatibili, capaci di "funzionare" in maniera sostenibile e autosufficiente a livello energetico.

La certificazione EPD, con valenza internazionale, è un ulteriore attestato della sostenibilità dell'Architectural Terrazzo. L'utilizzo di materie prime seconde e di risorse idriche provenienti dalle acque di raccolta pluviali per la realizzazione di questo materiale sono fondamentali nella valutazione dell'impatto ambientale del Terrazzo di AGGLOTECH durante tutte le fasi del suo ciclo di vita.

AGGLOTECH Architectural Terrazzo is a high-quality construction material that is particularly durable and suited for use on surfaces that are subject to high levels of wear and tear.

Our certified technicians are some of the best in their fields and enable us to amply surpass the requirements of the EN 13748 standard.

Our materials and production processes are regularly monitored in LGA's Bautechnik lab in Nuremberg.

The CE mark on all AGGLOTECH products certifies their compliance with applicable European Community standards. It also indicates that the product has been subjected to specific controls prior to being distributed and that it meets the environment, health and safety requirements of the European Union.

The Leadership in Energy and Environmental Design (LEED®) standards, developed in the United States and adopted in 40 countries around the world, apply to sustainability in construction. Drafted by the US Green Building Council in collaboration with US and Canadian businesses and university researchers, these standards set requirements for the construction of eco-friendly buildings that are both sustainable and energetically self-sufficient.

Our internationally valid Environmental Product Declaration (EPD) is further certification of the sustainability of our Architectural Terrazzo. Our use of secondary raw materials and rainwater in the production of this material is fundamental to assessing the environmental impact of AGGLOTECH Terrazzo throughout its product life cycle.

Architectural Terrazzo von AGGLOTECH ist ein hochwertiger Baustoff, der besonders widerstandsfähig und für Flächen geeignet ist, die hohen Beanspruchungen und großem Verschleiß ausgesetzt sind.

Unsere technischen Zertifikate weisen exzellente Ergebnisse auf, die die Anforderungen der Norm EN 13748 bei Weitem übertreffen.

Der Produktionszyklus und die Materialien werden kontinuierlich von der Zertifizierungsstelle Bautechnik LGA in Nürnberg geprüft.

Die CE-Kennzeichnung aller AGGLOTECH-Produkte zertifiziert deren Übereinstimmung mit den einschlägigen gemeinschaftsrechtlichen Bestimmungen. Insbesondere gibt sie Aufschluss darüber, dass das Produkt vor der Markteinführung speziell bewertet wurde und die Vorgaben der Europäischen Union, was Sicherheit, Gesundheit und Umweltschutz betrifft, erfüllt.

Bei den LEED®-Standards (Leadership in Energy and Environmental Design) handelt es sich um Parameter für ökologisches Bauen, die in den Vereinigten Staaten entwickelt wurden und in 40 Ländern der Welt angewandt werden. Sie wurden in Zusammenarbeit mit Unternehmen und Forschenden US-amerikanischer und kanadischer Universitäten erstellt und geben die Voraussetzungen für den Bau von umweltverträglichen Gebäuden vor, die nachhaltig „funktionieren“ und in energietechnischer Hinsicht autonom sind.

Die international geltende Umweltproduktdeklaration (EPD) repräsentiert einen weiteren Nachweis der Nachhaltigkeit von Architectural Terrazzo. Die Nutzung von Sekundärrohstoffen und rückgewonnenem Regenwasser zur Fertigung dieser Materialien spielt bei der Umweltfolgenabschätzung von AGGLOTECH-Terrazzo während dessen gesamter Lebensdauer eine ausschlaggebende Rolle.