



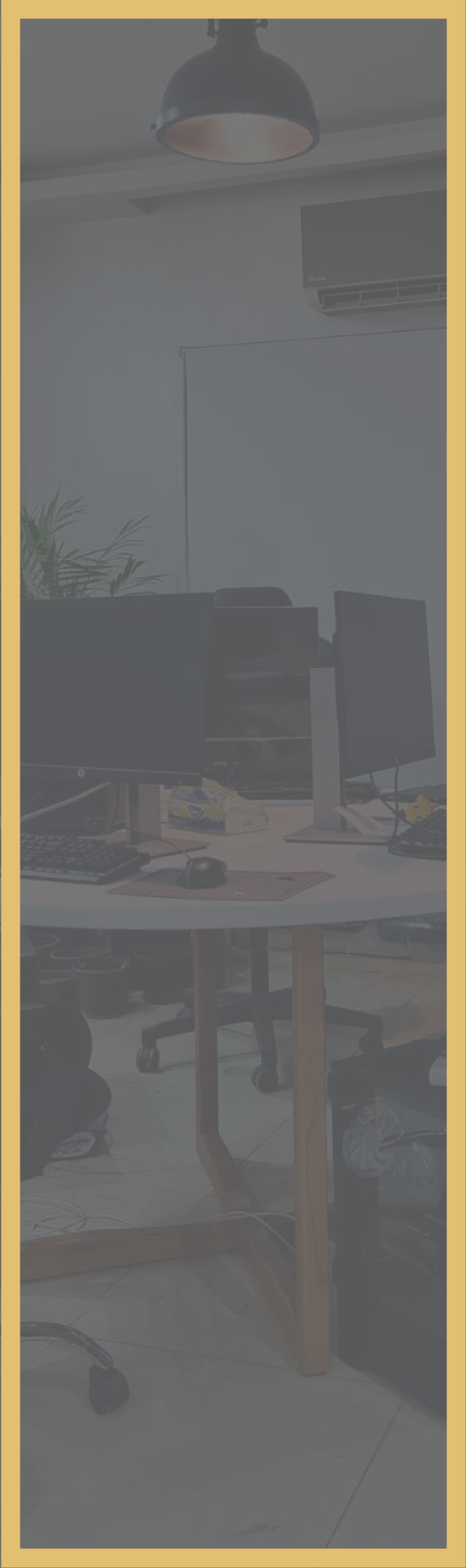
MOAVAI COMPANY PROFILE

MOAVAI company

MOAVAI is an architecture, interior, and product design firm that offers the best services proceeding in studied steps to provide an extraordinary experience to their clients

Contents

| | |
|-------|---------------------------------|
| 01 | Cover |
| 02 | Contents |
| 03 | About us |
| 04-05 | Mission, Vision, and experience |
| 06-07 | What we do |
| 08-59 | Some of our work |
| 60 | Contact us |



About Us

Welcome to our architecture, interior design, and furniture firm! We are a team of passionate and experienced professionals who are dedicated to creating beautiful and functional spaces that meet the unique needs and preferences of our clients.

At our firm, we understand that every project is different, and we take a personalized approach to each one. We work closely with our clients to understand their vision and goals, and we use our expertise and creativity to bring that vision to life. Whether you are looking to design a new home, renovate your existing space, or furnish a room, we have the skills and knowledge to help you achieve your goals.

We believe that good design should not only be aesthetically pleasing but also functional, and we strive to create spaces that are both beautiful and practical.

Whether you are looking for a full-service design package or simply need help selecting furniture, our team is here to help.

Our mission

We work hard to help people to go through studied steps to get the best results in regard to design, construction, and finishing.

Our vision

One day everyone will understand the meaning of studied steps to make their projects.

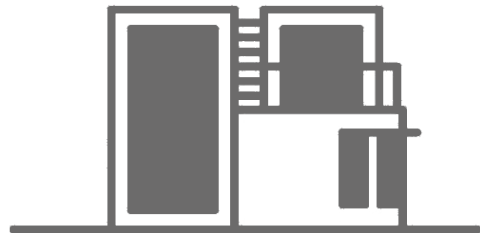


Experience

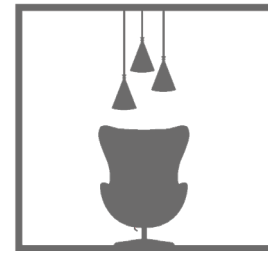
Our name is spreading out globally through out our designs in different countries like Egypt, Saudi Arabia, Bahrain, and USA helping in variable fields.

What Do We Do

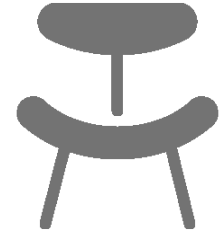
MOAVAI is a firm that offers a full solution for any space starting with architecture design, and ending with construction and finishing, going through Interior design, furniture design, and model making coping with the high end technology by executing building information system (BIM). also we do offer some special services like building a virtual reality tours and augmented reality systems.



Architecture design



Interior Design



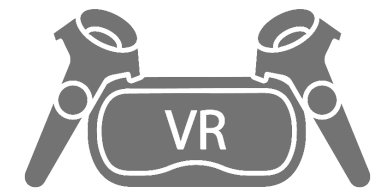
Furniture Design



Cons. & finishing



Model making



**Arch. Visualization
and VR**

AD-VIDA Compound

AD-VIDA Stretching Over 21,000 squares meters, contemporary designed according to sustainability standards and 4th generation cities, providing cutting-edge technologies to make life easier than ever



Well-designed landscapes have the potential to disrupt the monotony of urban environments by offering a breath of fresh air to people and providing opportunities for personal reflection and social interaction.



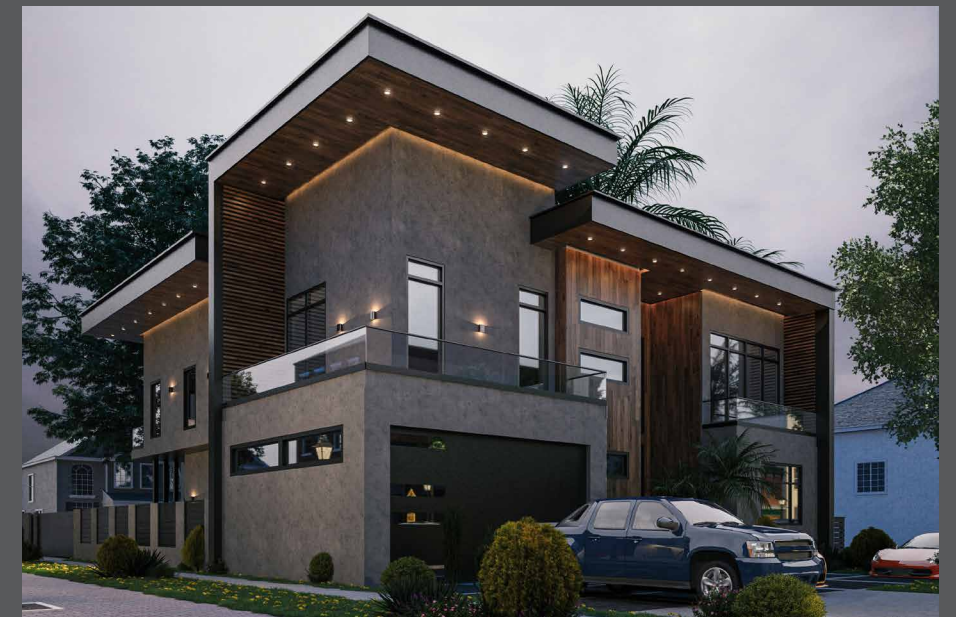
A very unique innovative design, with variety of materials playing in harmony making the facade more viable

Saxon Villa

This modern house in Texas is a beautiful example of modern architecture. The use of natural materials, neutral colors, and simple shapes creates a timeless and elegant design that is both functional and aesthetically pleasing.



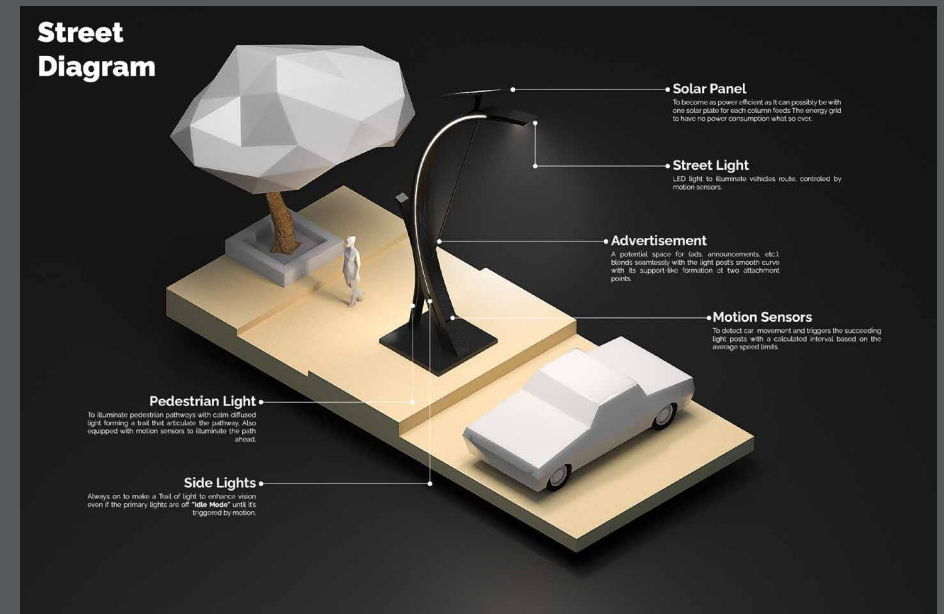
One of the standout features of the house is the entrance wall, which is made of wood and glass. This creates a warm and inviting welcome for visitors, while also providing a focal point for the design of the house.



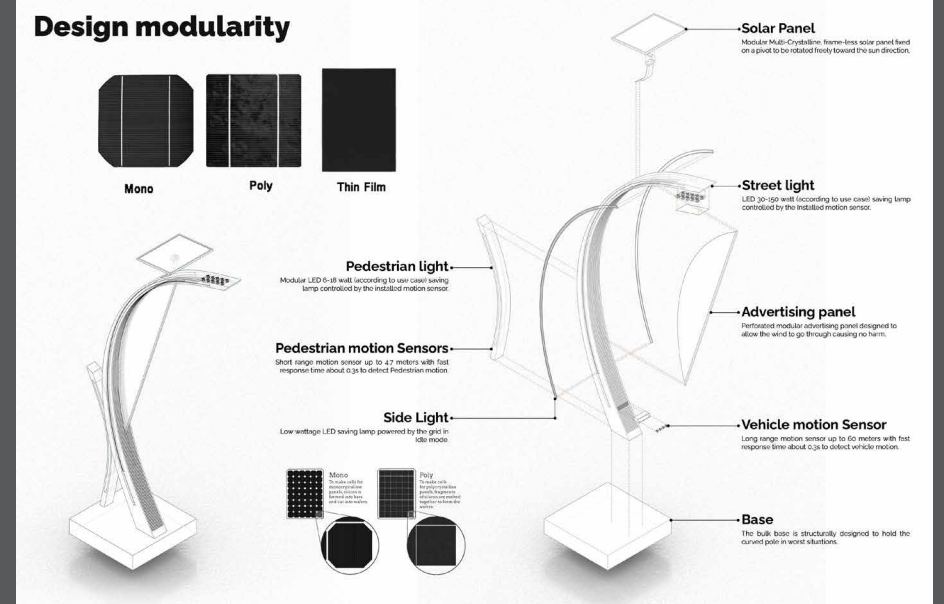
The walls of the house are finished with plaster, which creates a smooth and seamless look. Neutral colors are used throughout the house, creating a timeless and elegant aesthetic. The use of neutral colors allows the focus to remain on the architectural design of the house, rather than the color scheme.

MCSL

Motion Controlled smart light 's (MCSL) philosophy im-merged from our desire to create a uniquely sustaina-ble, intelligent and aesthetically designed yet functional product, and above all efficiently saving power



It doesn't only serve the ordinary purpose of a light post, It exceeds its role in many ways; having Idle mode to conserve energy, having side lights that are always on to always articulate a path, having a dedicated pedestrian light that is also equipped with motion sensors, and above all generating energy!!



Feasability achieved by the design's modularity an ease of assembly, shape simplicity to be mass produced, and easily acquired materials (Stainless steel).

Diyar Al Muharraq Gate

The project was developed according to a unique concept that blends between traditional and contemporary architecture, embracing the vision behind the City's Masterplan which is rooted in the history, culture, and traditions of the Kingdom of Bahrain.



The gate glows among the sky of Kingdom of Bahrain announcing some important events within the country.



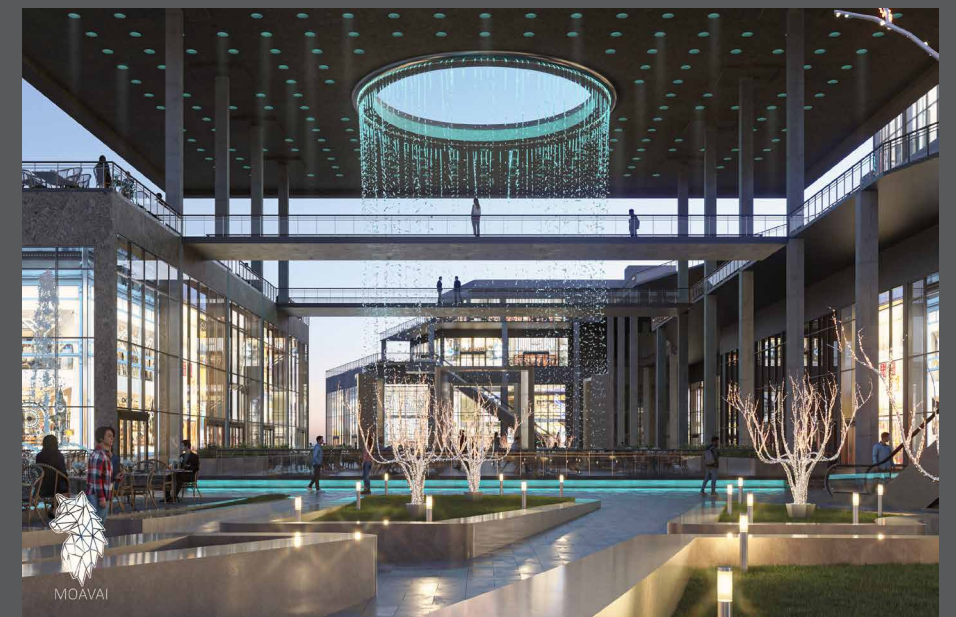
The texture of pushes, and roots of the life tree was selected to be used in the outer body of the gate because the life tree is a true shape of life and sustainability as it could live for more than 400 years in the desert

(S)SQUARES mall

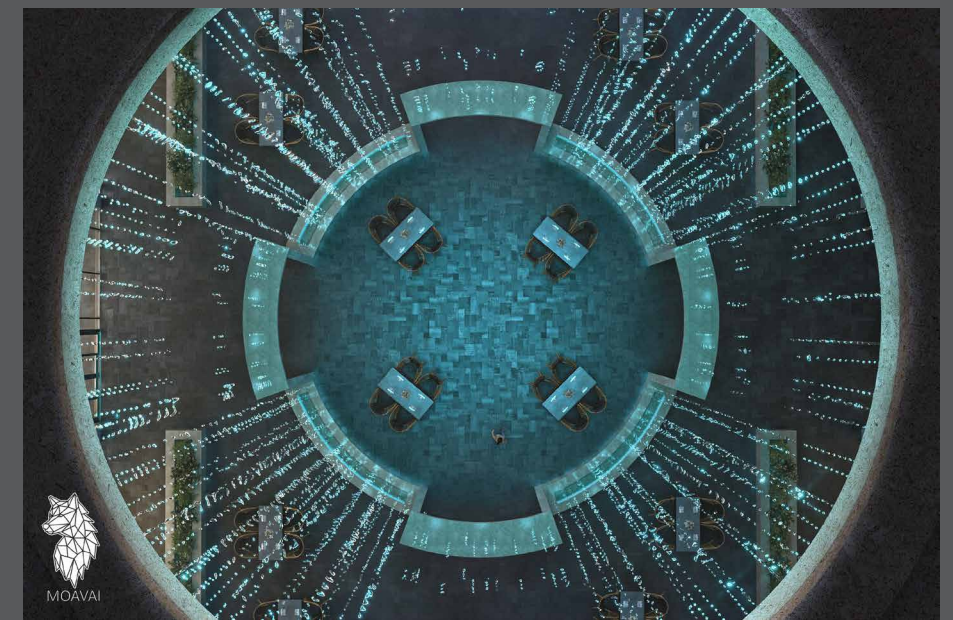
The vision for the project is to build unique and landmark commercial strip mall and boulevard at Southern area of AlKhobar city, Saudi Arabia



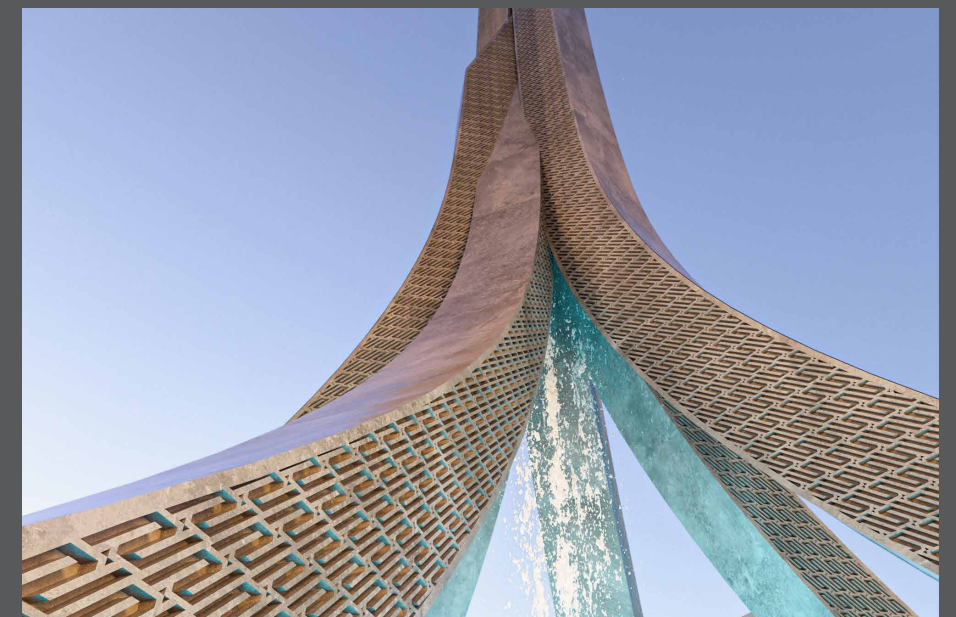
Balanced front elevation with an old Najdi pattern that was used to make perforated facade with back lights



The use of lights in several places in different shapes like the trees, upside down fountain, and poles



Top view of the upside down fountain with four tables inside



The central landmark with engraved logo of the S(suares) mall as pattern, and water fall from the middle spot.

Ischia mini compound

Ischia mini compound is designed to be located in New heliopolis city with eight different types of buildings and setups.



The modern exterior of the buildings consists of an abstract horizontal rectangles and a mix of materials like stone ,wood-like metal, and dry-mix.



The entrance is shaded with wood and concrete frames directing the focus to the middle water fountain.

Mahsoura buildings

Buildings are located in al mahsoura, 6th of October. The light is used widely in the facade for extra ordinary neoclassical design.



Ground floor apartments contains terrace to enjoy the view with a direct access to the zero level.



Over all symmetrical elevation adds value to the building challenging the layout of the architecture plane.

Mahsoura buildings

Buildings are located in al mahsoura, 6th of October. The light is used widely in the facade for extra ordinary neoclassical design.



Ground floor apartments contains terrace to enjoy the view with a direct access to the zero level.



Over all symmetrical elevation adds value to the building challenging the layout of the architecture plane.

Star Mohamed Nour roof

We were honored to work with the star Mohamed Nour in his roof creating such a beautiful greenful , delightful place



The set consists of dynamic pergola to adopt with the weather, projector, fireplace, and finally a very comfortable outdoor seats.



The bar was designed with a mix of two materials wood, and metal, and decorated with a green wall to complete the scene.

Diriyah gate

Diriyah the Saudi Kingdom's historic and cultural heart front house is designed by MOAVAI in Najdi style



Najdi architectural elements appears in the scene like the Najdi pattern, wood ceiling, door opening, and mudlike texture wall



Using natural materials such as travertine marble in two colors silver and dark cream enhances the Najdi style

D2 Admin. Office

A beautiful interior design of an admin office by MOAVAI is a stunning blend of modern and functional elements. The layout is carefully planned to optimize workflow and productivity, while the use of natural materials and accents adds warmth and character to the space.



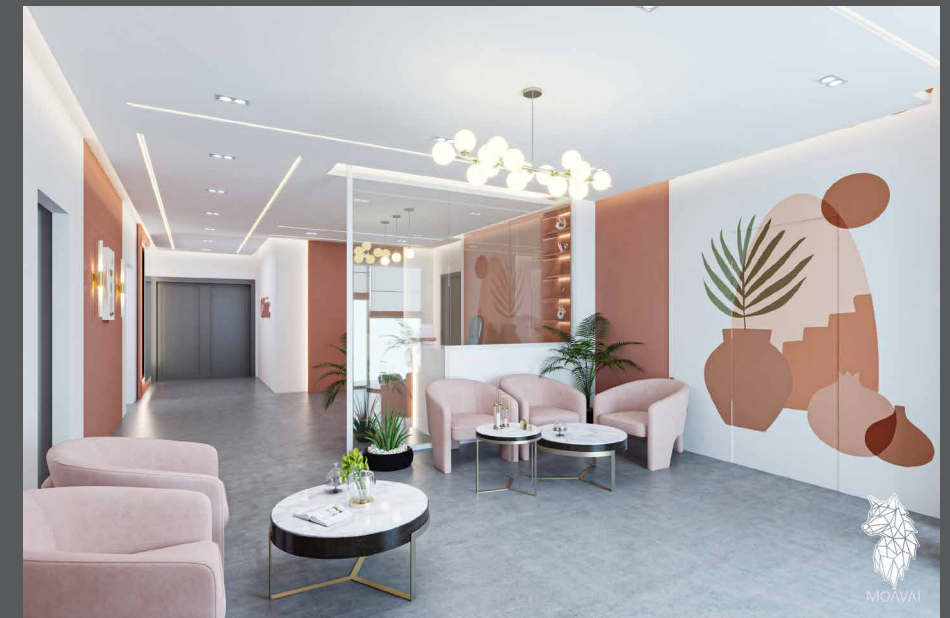
The furniture is sleek and ergonomic, providing comfort and support for employees. The lighting is carefully chosen to create a bright and welcoming environment.



The walls are adorned with tasteful artwork and decor, adding a touch of personality to the space including some art pieces with light that enhance the overall scene.

MHC Clinic

The design provides stunning and inviting space that creates a welcoming atmosphere for clients seeking beauty treatments. The use of warm colors throughout the space creates a cozy and comfortable environment.



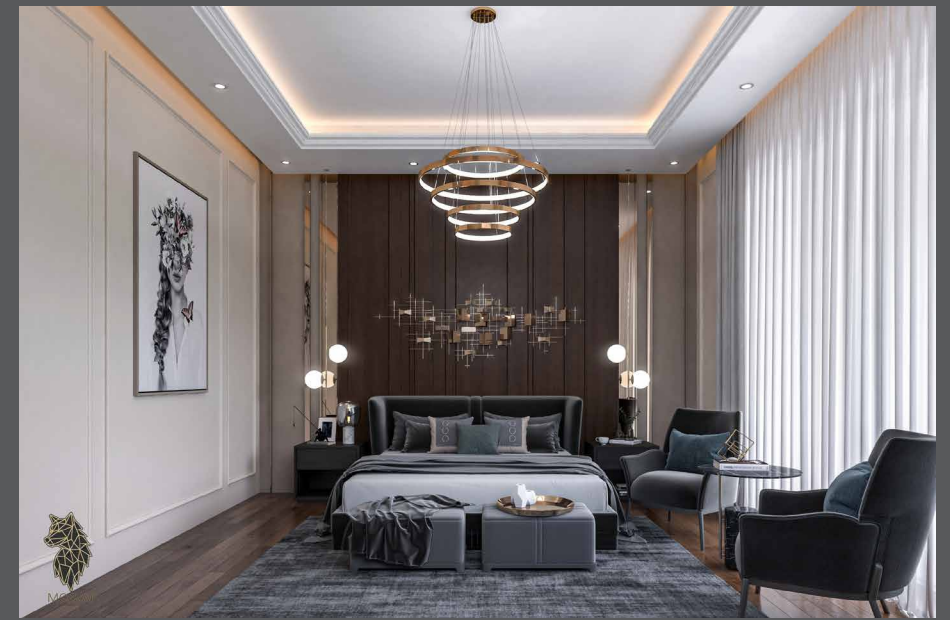
The waiting area is designed with comfortable seating, with plush chairs in soft neutral tones, with a well distributed natural plants for stress relief



The reception desk is sleek and modern, with a fabricated wood panels finished with reef colour that complements the warm scheme.

NEWGIZA Villa

Luxurious neoclassical Villa located in famous NEWGIZA compound designed to be a master piece using a natural based materials like wood and marble.



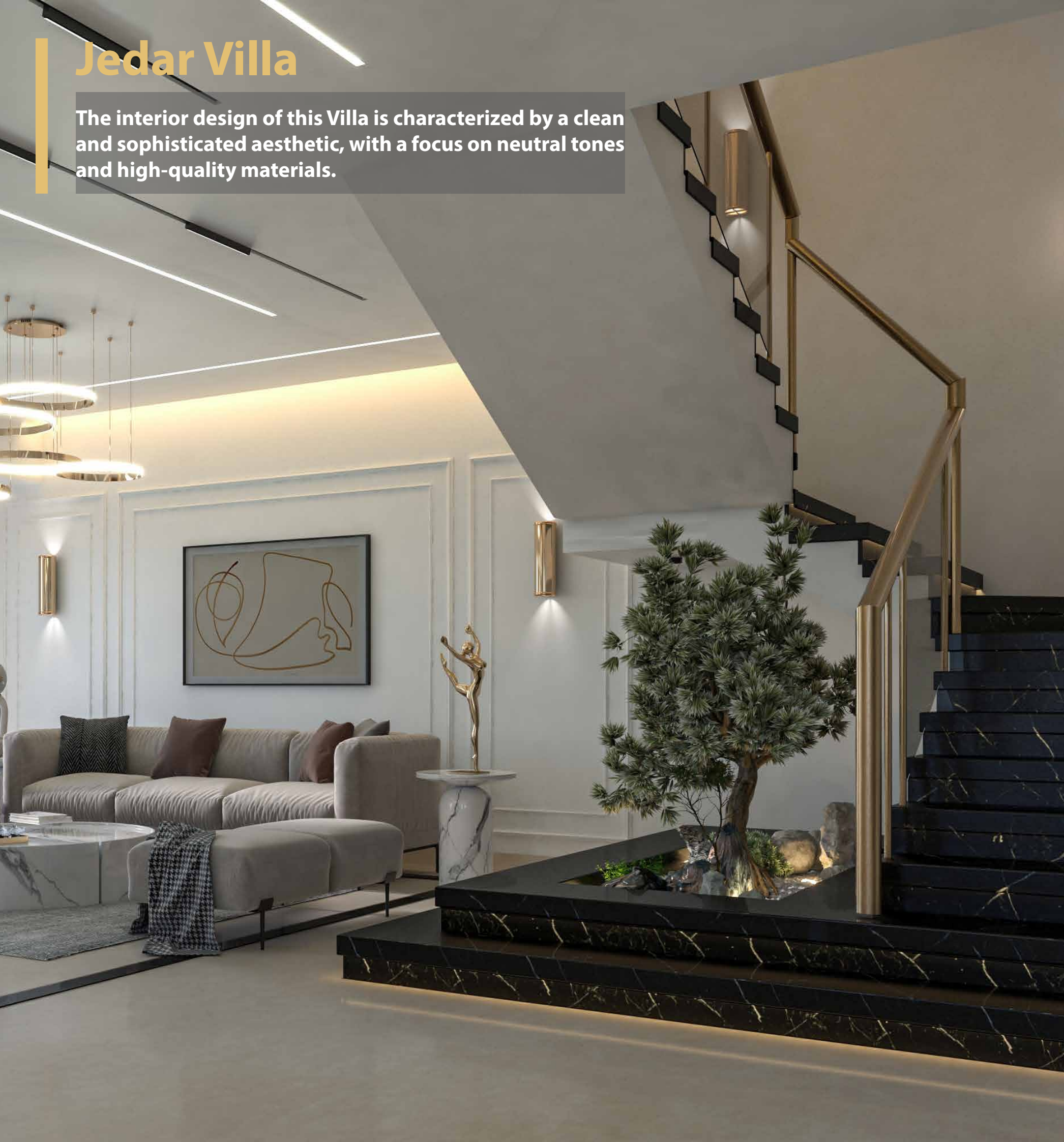
Simple neoclassical Design never fail to make the atmosphere comfortable as for the function of a space like bedroom while a touches of golden items adds some value to this space to be luxurious.



Semi-outdoor area so the client can enjoy the outdoor feeling and the indoor environment control furnished with a raw wood looking seats to complete the atmosphere.

Jedar Villa

The interior design of this Villa is characterized by a clean and sophisticated aesthetic, with a focus on neutral tones and high-quality materials.



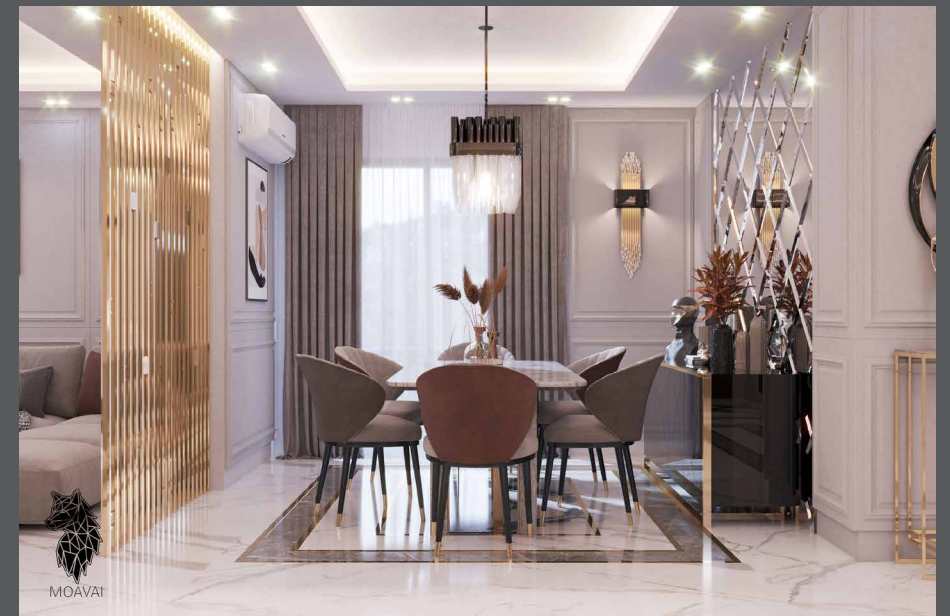
The flooring is made of black and beige marble, which adds a touch of elegance and luxury to the space. The black marble cladding on the walls creates a sense of depth and texture, while also adding a bold and dramatic element to the design.



The walls are painted in neutral colors, creating a calm and serene atmosphere that allows the other design elements to stand out. The ceiling is painted in white, creating a sense of height and spaciousness.

Hydepark apartment

Mixing between neoclassical style and modern vibrant colours with golden touches evokes a mix of feelings of being in a luxurious and colourful place at the same time.



Modern style dining above panda marble makes the perfect scene while paying attention to colours and details in the accessories .



Simple but full of details design that takes your sight immediately, in addition to relaxing colours which are perfect to be used in bedrooms.

Jasmen villa

One thousand and five hundred squared meters villa designed to be three floors one for the family, another for guests, and finally one for entertainment.



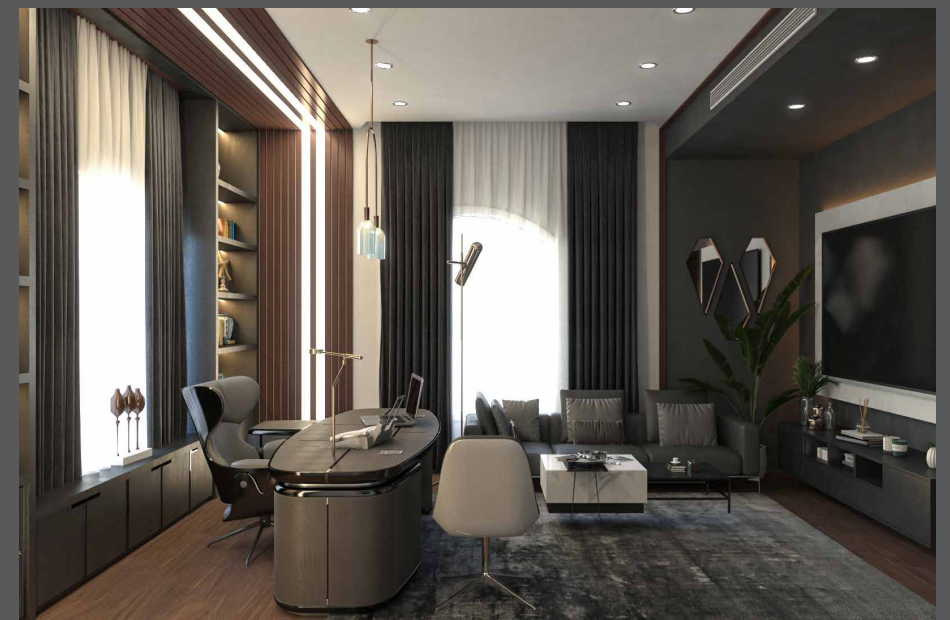
Middle lobby with two lounge chairs for a little conversation under a one of kind piece of art in blue to match the colour palette.



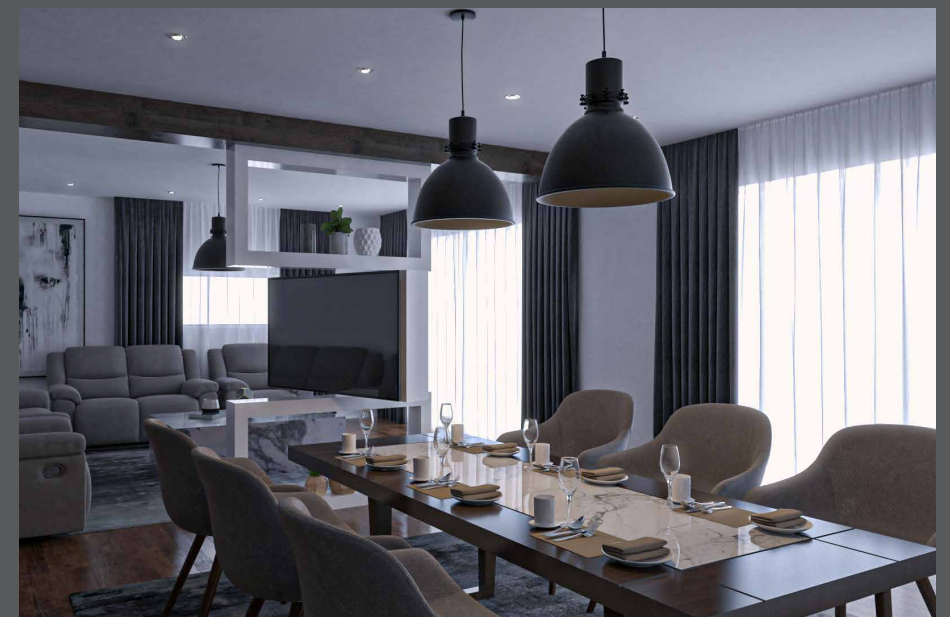
Dining area are designed in to be in middle ground between the family part and guest part with overall neoclassical style.



MOAVAI



One room was designed to be an office for the owner with one of kind pieces around the place.



The entertainment floor was designed in modern style with plain walls to concentrate on the activities them selves. Also creative solutions were developed like the 360 rotational TV in order to help with the activities.

Dar masr apartment

The challenge was to transform a middle class apartment into a class one with low cost. Neutral theme with a green accent colour



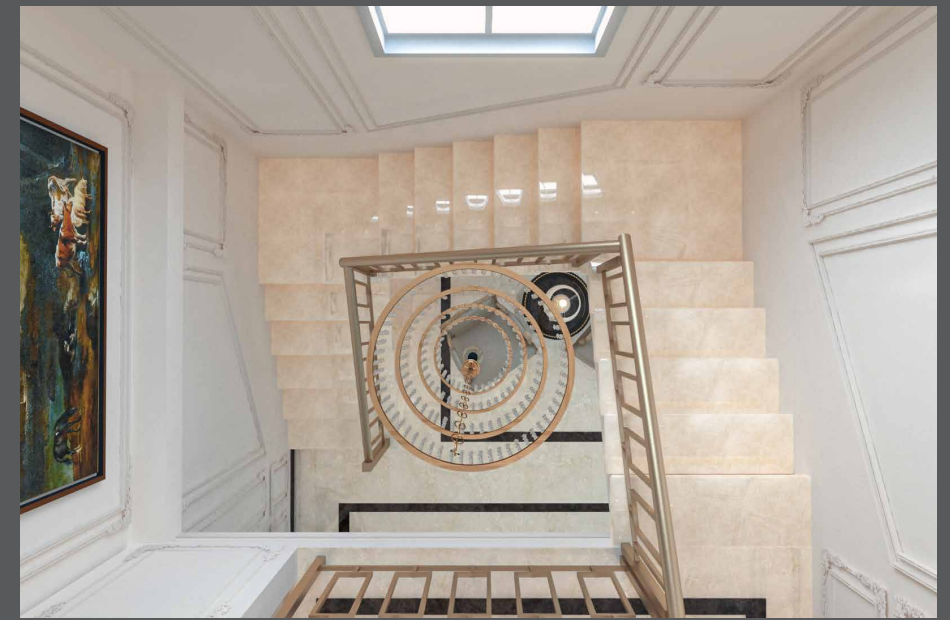
The area is small so the semi open kitchen design was chosen in order to give a larger feeling of the space.



Light gray wall with rose accent colour used in the furniture makes the living room more comfortable to stay longer

Gharb soumid Penthouse

Light classic style is applied on penthouse through some elements like the detailed panoh and cornice and other elements.



luxurious atmosphere as achieved through full height stair with middle one of kind chandelier



The furniture also is designed in light classic style to be in harmony with the overall atmosphere

Shrouk city apartment

Buildings are located in al mahsoura, 6th of October. the light is used widely in the facade for extra ordinary neoclassical design.



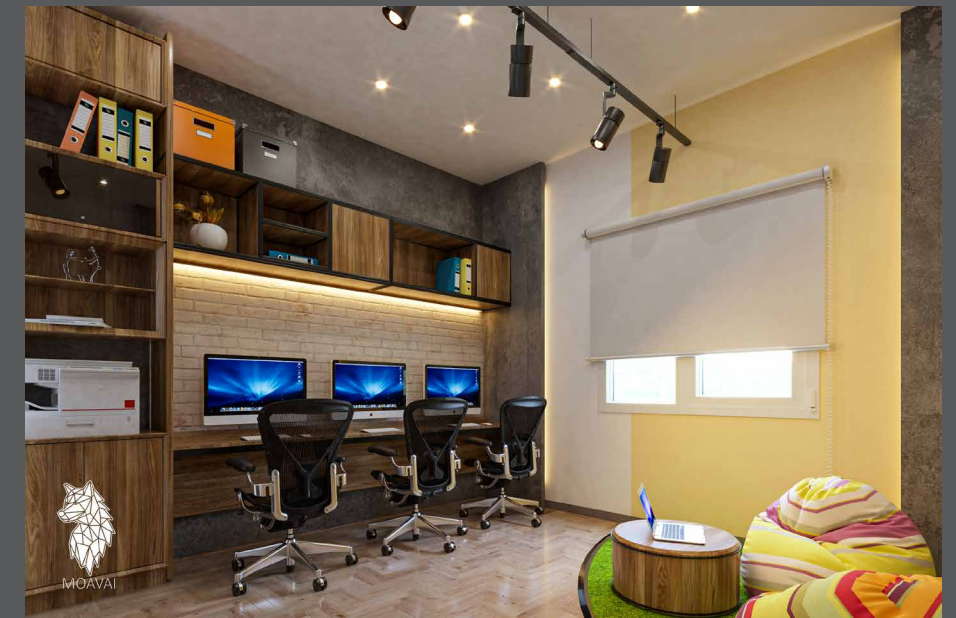
Ground floor apartments contains terrace to enjoy the view with a direct access to the zero level.



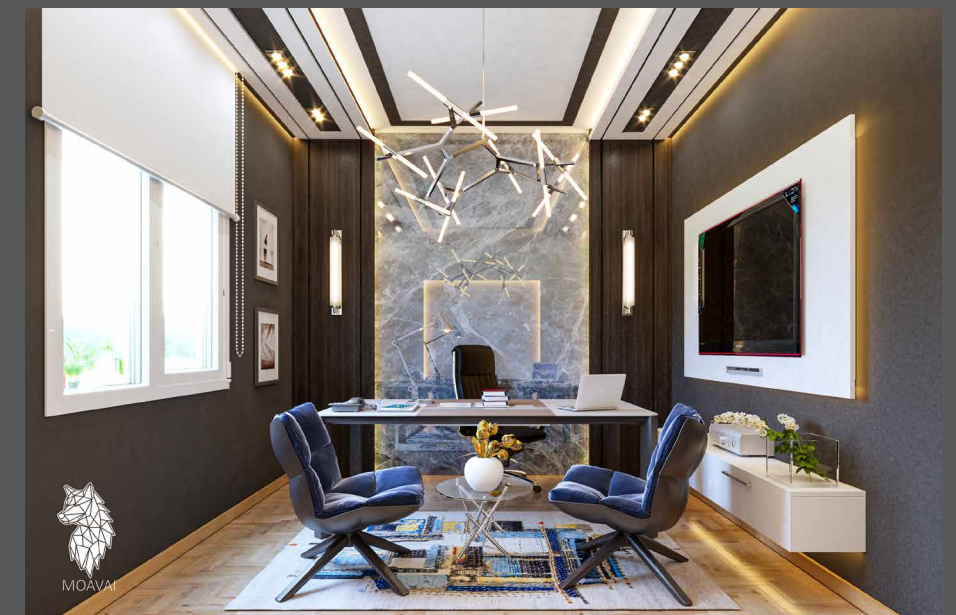
Over all symmetrical elevation adds value to the building challenging the layout of the architecture plane.

Audaz Office

The Comfy friendly approach was approved for the offices so you can feel comfortable while working in this environment. light color materials provoke the feeling of relaxation while the accent colors bring happiness.



Merging between two different working environment a formal work-cells and beanbag working place allow to employees to switch between them increasing the productivity.



Manager office in a modern cloth, it was design using neutral colours with a blue accent colour. Master piece chandelier with a petra gray marble behind redirect the focus to the office.

International lawyer office

Lawyers always ask for a design that shows how respectful the place is, so using basic natural materials like wood and marble achieves the goal.



The right distribution of the lighting is very important in places like offices, while paying attention to the lighting reflection factor in a material like the wood.



Meeting rooms should be directed to be facing the monitor while paying attention to the lighting, also the design of the meeting table is very important for a good communication between the members.

PLANETA MARRON Retail

A Spanish brand like Planeta marron new to MENA must has a unique design. A concave shape display area welcomes customers while enjoying the products



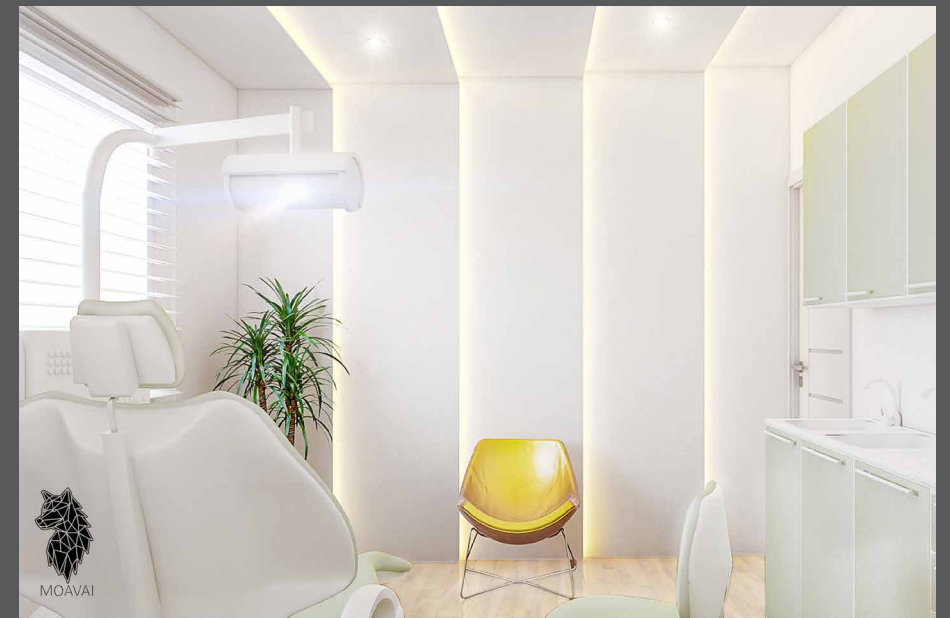
The inside-mall facade combines between old and new styles to reflect some philosophy of the brand using neoclassical touches with high-end display zone using neon light



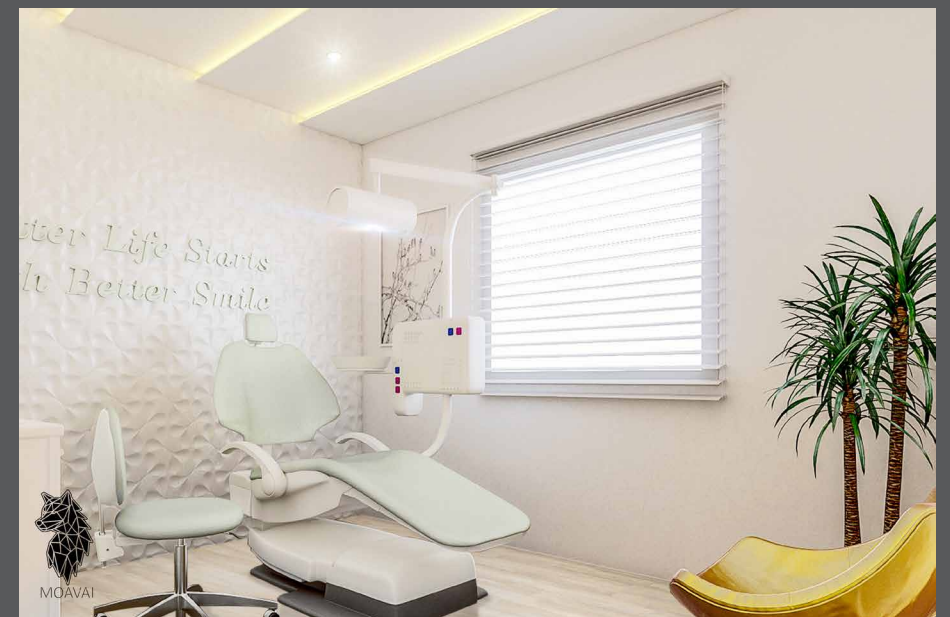
VIP area highlights some expensive items displayed above and under the light of those cabinet, selected for specific VIP people

Audaz clinic

The Clinic was designed to be built in AUDAZ mall located in new administrative capital and in order to cope with that it was designed in modern style



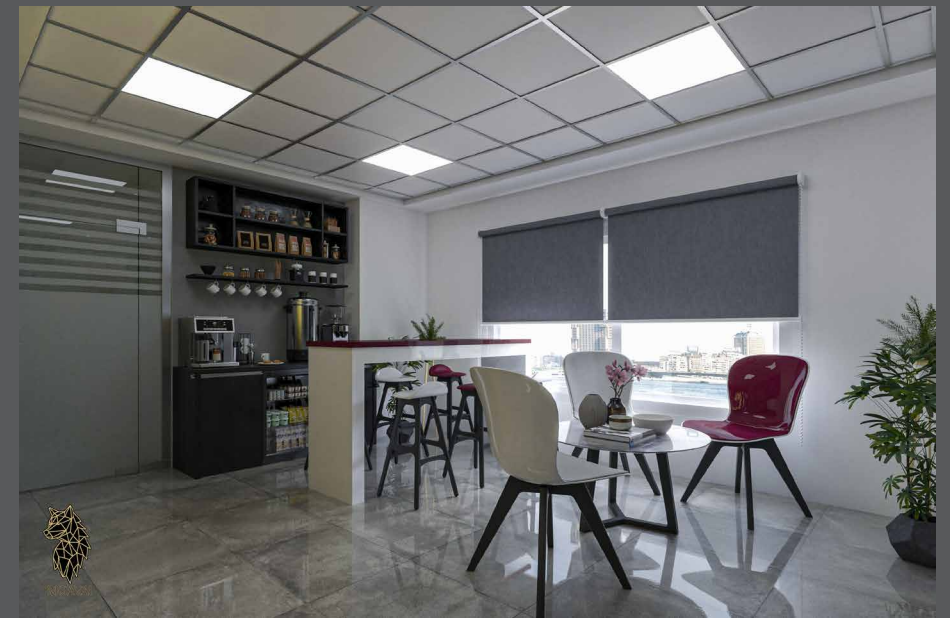
Lights on the wall continue to go up to the ceiling making them as one part while the light green colour cabinets and dental chair make the customer feel comfortable .



The natural lighting from the window falls on a wall with a 3D tiles installed adding some extra details to this walls .

Lama medical head office

Lama medical head-office contains several zones with a different function like the reception, dental training centre, lecture room, and offices.



The reception is serving several zones like the dental training centre so a break area was designed for that purpose with a small meeting table.



The lecture room is designed to direct the attention of the students to the monitor in the middle with two helping monitors on the side walls



Thank you



For a digital copy



Head Office

55, El-Bostan,
Sheikh Zayed,
Giza Governorate






Contact no.

01022998964



On internet

 moavai.com
 [moavai.sp](https://www.facebook.com/moavai.sp)
 [moavai.sp](https://www.instagram.com/moavai.sp)
 [moavai](https://www.linkedin.com/company/moavai)