

The background of the cover is a close-up, artistic photograph of a woman's face. The image is heavily blurred and has a strong green color cast. Only her eyes, nose, and mouth are partially visible through the haze.

SPECTRUM

cc-tapis®

ISSUE 2020

PATRICIA URQUIOLA
DAVID/NICOLAS
MAARTEN DE CEULAER
JEAN-MARIE MASSAUD
GERMANS ERMIČS
STUDIOPEPE.
BETHAN LAURA WOOD
MARTINO GAMPER
CRISTINA CELESTINO
MAE ENGELGEER
GARTH ROBERTS
FAYE TOOGOOD

cc-tapis®
bis® cc-tapis®
bis® cc-tapis®
bis® cc-tapis®
bis® cc-tapis®
bis® cc-tapis®
bis® cc-tapis®

cc-tapis®

ISSUE 2020

PATRICIA URQUIOLA
DAVID/NICOLAS
MAARTEN DE CEULAER
JEAN-MARIE MASSAUD
GERMANS ERMIČS
STUDIOPEPE.
BETHAN LAURA WOOD
MARTINO GAMPER
CRISTINA CELESTINO
MAE ENGELGEER
GARTH ROBERTS
FAYE TOOGOOD

cc-tapis® cc-tapis® cc-tapis® cc-tapis® cc-tapis® cc-tapis® cc-tapis® cc-tapis® cc-tapis® cc-tapis®

SPECTRUM



light is used
as an architectural
and furnishing element,
whether it is through
its absence or presence,
a catalyst to illuminate
and exemplify color,
every color. each color
has a space, and each
space has a rug.

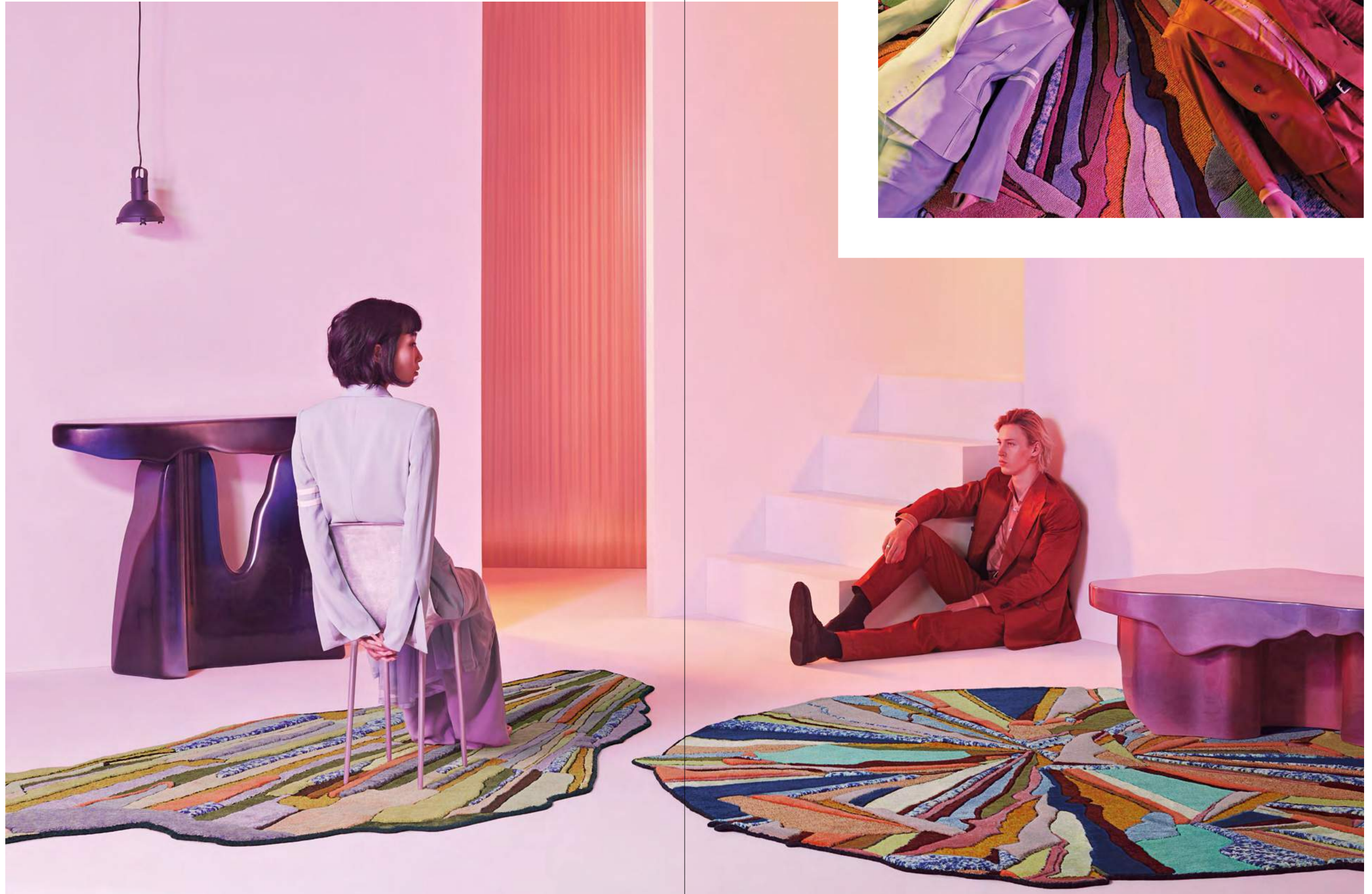
Federico Sarica



**INTERIOR
WITH
TABLE**
designed by
Faye Toogood
discover the
collection on page 36



SUPER ROCK, SUPER ROUND HOT
designed by Bethan Laura Wood
discover the collection on page 30



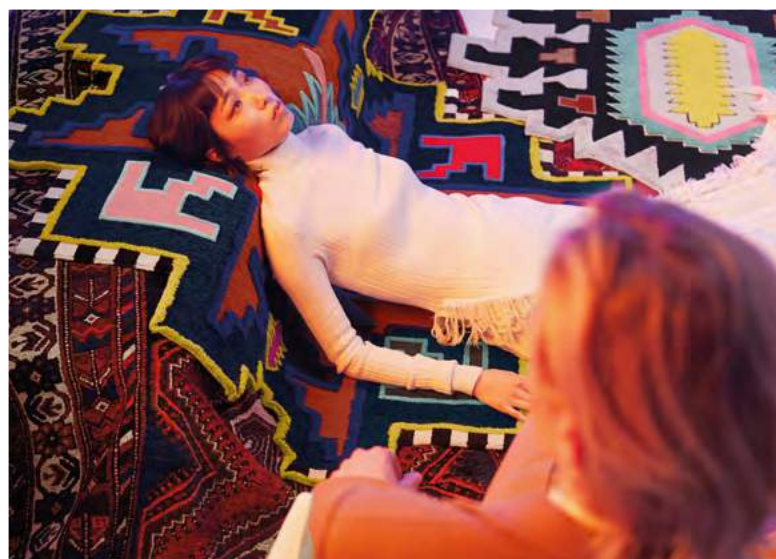
CHROMA RADIATE, CHROMA SPILL
designed by Germans Ermīcs
discover the collection on page 18





XEQUER E
designed by **Martino Gamper**
discover the collection on page 14





PALMETTE LAZER CANNON
LILLA AND PINK
KAZAK SPACE SHIFTER
TABRIZ DESTROYER
designed by the cc-tapis design-lab
discover the collection on page 6





FORDITE 3
designed by **Patricia Urquiola**
discover the collection on page 12

FORDITE 2
designed by
Patricia Urquiola
discover the collection
on page 12



HIGHLIGHTS

cc-tapis®

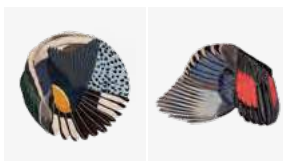


NEWS 2019

feathers

p. 4

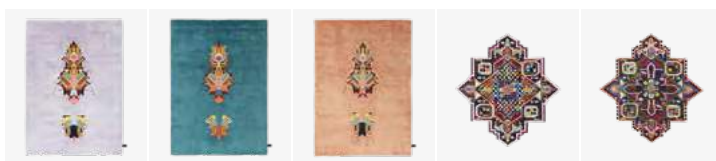
Maarten De Ceulaer



rug invaders

p. 6

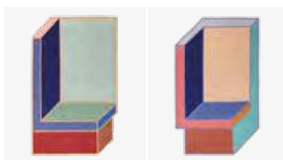
cc-tapis design-lab



visioni

p. 8

Patricia Urquiola



rotazioni

p. 10

Patricia Urquiola



fordite

p. 12 Patricia Urquiola



xequer

p. 14

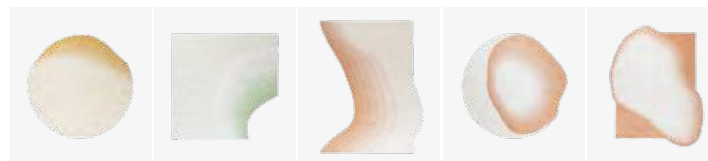
Martino Gamper



plasterworks

p. 16

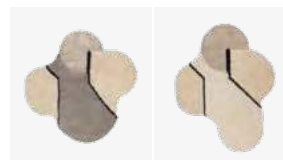
David/Nicolas



tidal

p. 18

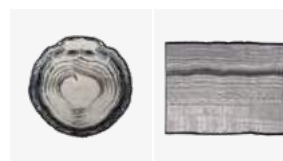
German
Ermics



lunar addiction

p. 20

Studiopepe.



parvata

p. 22

Jean-Marie Massaud



chand

p. 24

cc-tapis
design-lab



envolée

p. 26

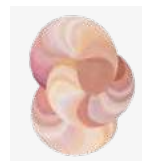
Cristina Celestino



super fake

p. 30

Bethan Laura Wood



slinkie

p. 32

Patricia Urquiola



bliss

p. 34

Mae Engelgeer



after party

p. 38

Garth Roberts

ROUND STANDARD



250x250 cm
cotton weave, himalayan wool and silk pile

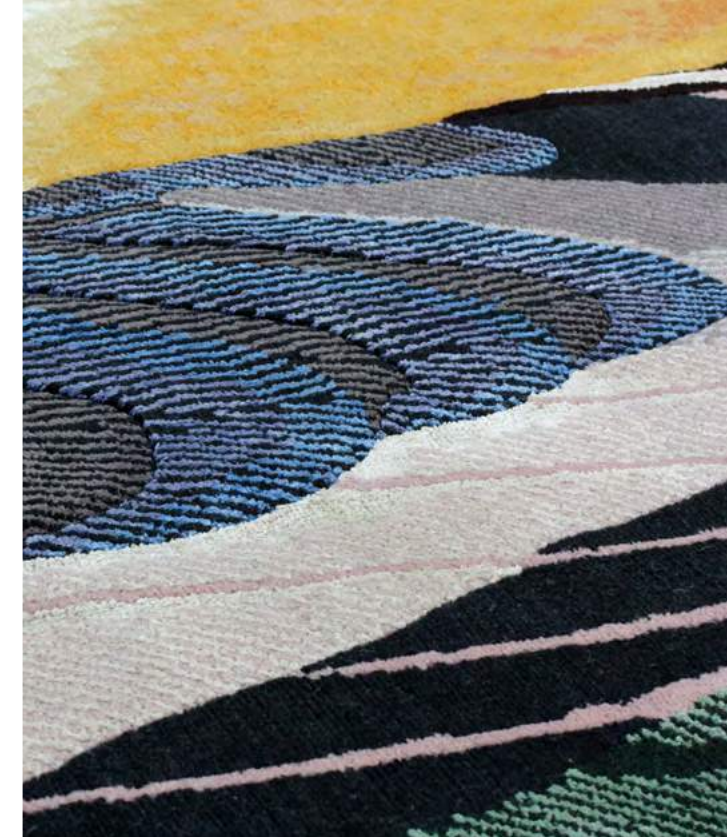
FEATHERS

SIGNATURE COLLECTION

Maarten has always had an affinity for birds and years ago he came across the illustrations by John James Audubon and John Gould which have been inspiration ever since. Inspiration which he has tweaked, morphed and abstracted into a collection of ultra-detailed rugs.

designed by
Maarten De Ceulaer

custom sizes available



FREEFORM STANDARD
ROUND STANDARD

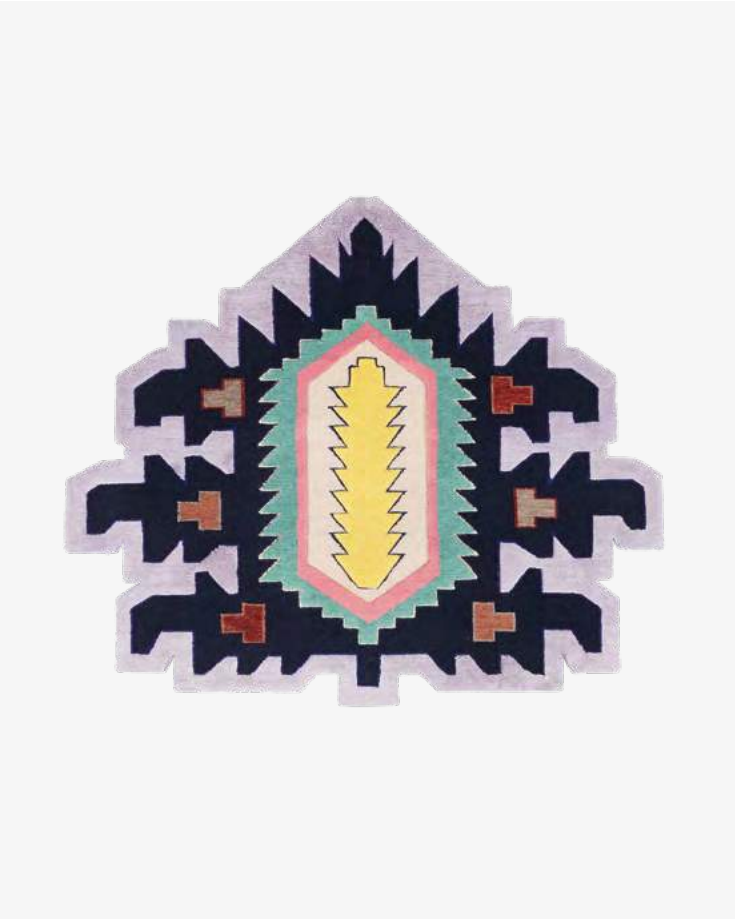
RUG INVADERS

NEW CLASSIC COLLECTION

designed by
cc-tapis design-lab

custom sizes available

PALMETTE LAZER CANNON LILLA



135x115 cm
cotton weave, himalayan wool and silk pile



THE MOTHERSHIP LILLA
KAZAK SPACE SHIFTER STANDARD
TABRIZ DESTROYER STANDARD
PALMETTE LAZER CANNON PINK



VISIONI

SIGNATURE COLLECTION



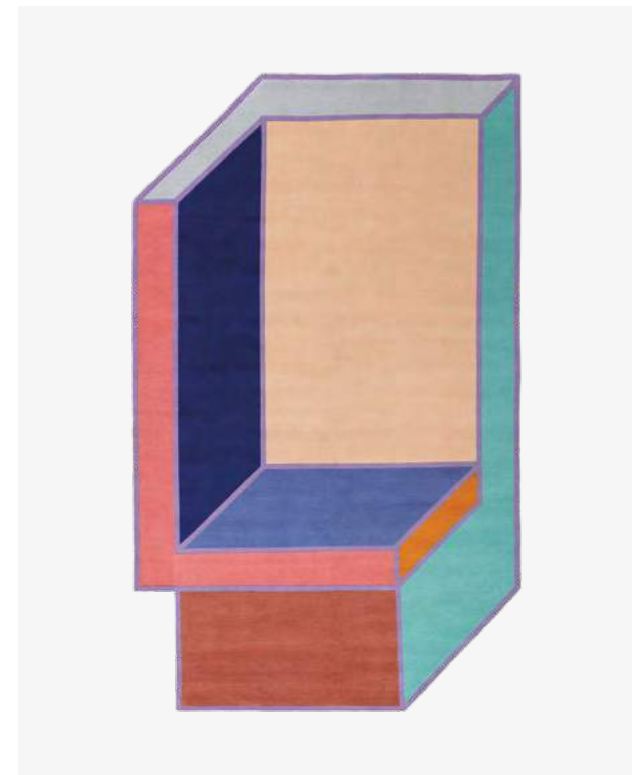
designed by
Patricia Urquiola



A ELECTRIC

190x300 cm

cotton weave, himalayan wool pile

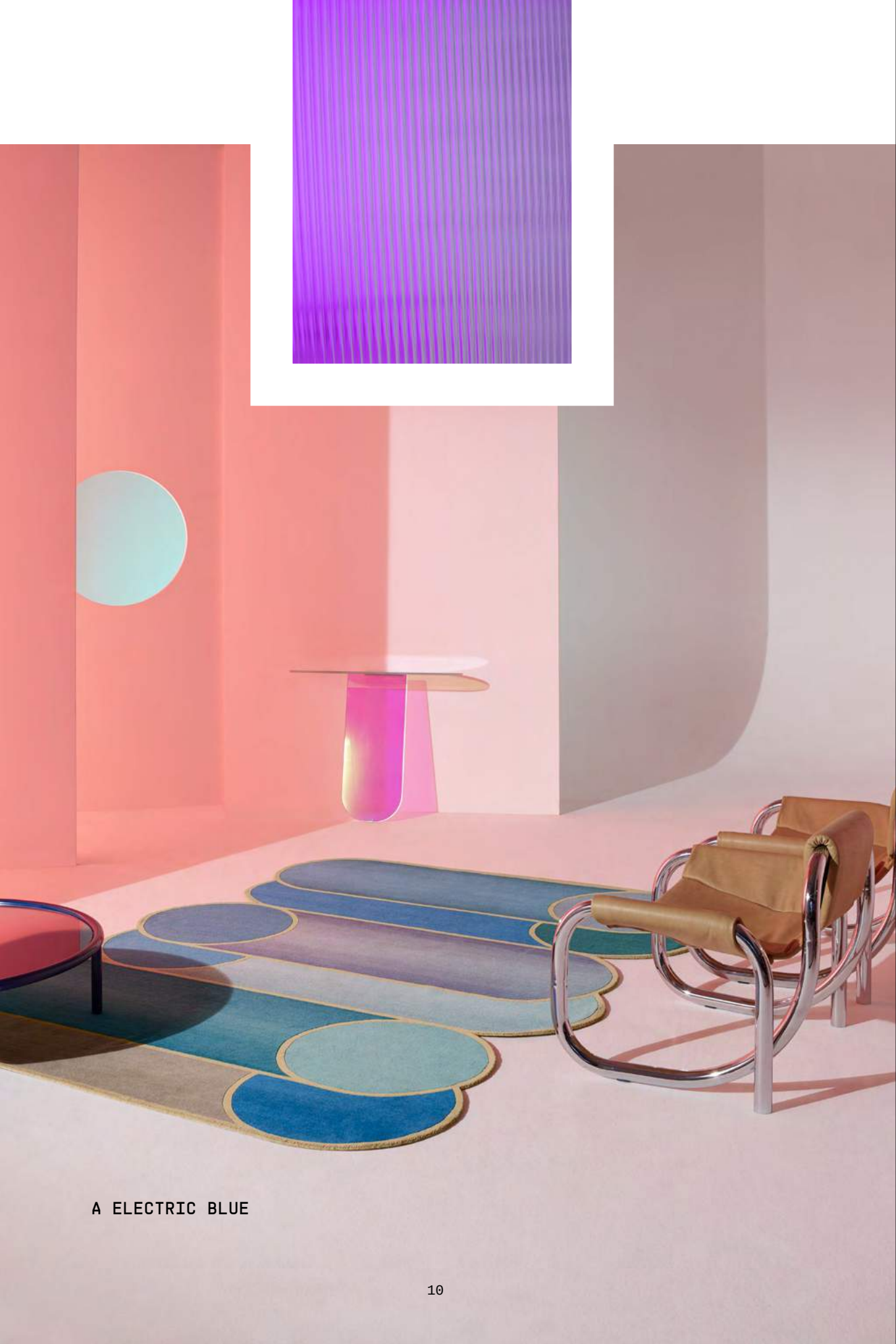


B ELECTRIC

180x300 cm

cotton weave, himalayan wool pile

custom sizes available



A ELECTRIC BLUE

A ELECTRIC PINK



220x300 cm
cotton weave, himalayan wool pile

ROTAZIONI

SIGNATURE COLLECTION

Rotazioni plays on the repetition of overlapping cylindrical forms that emphasize the circle as the matrix of the design. A scale of pastel colors and chromatic contrasts insinuate the gradient on the surface of the cylinders creating a three dimensional effect. This enhances the volume and dynamic composition of the design: from this Rotazioni, which translated means Rotations, was born.

designed by
Patricia Urquiola

custom sizes available

FORDITE

SIGNATURE COLLECTION

Fordite is a byproduct of the car manufacturing industry: automotive paint that has built up over time and baked repeatedly. Inspired by this material, Patricia Urquiola uses excess materials left over from cc-tapis regular production process to create the colorful layers.

designed by
Patricia Urquiola

custom sizes available

3 STANDARD



230x300 cm
cotton weave, himalayan wool, silk and aloe pile



2 STANDARD

XEQUER

SIGNATURE COLLECTION



E STANDARD

14

designed by
Martino Gamper

Multiple planes of chequerboards clash and crackle together whilst bright, piercing colours intertwine and overlap in a psychedelic world created by Gamper. The materials interplay in the same way as the color-blocked grids, resulting in a brilliant collision of textures and shades.



A STANDARD

170x240, 230x300 cm
cotton weave, himalayan wool,
silk and linen pile



B STANDARD

170x240, 230x300 cm
cotton weave, himalayan wool, silk and linen pile

custom sizes available

15

PLASTERWORKS

ARCHITECTURAL COLLECTION



A BLACK&WHITE

designed by
David/Nicolas

During a long lunch at Kaléo, a restaurant designed by David/Nicolas in Beirut, the triangle patterns that decorate the walls caught the eyes of the founders of cc-tapis, a detail which David/Nicolas translated into fine hand-knotted rugs for the Plasterworks Collection.



B STANDARD

170x180 cm

cotton weave, himalayan wool pile



C BLACK&WHITE

250x270 cm

cotton weave, himalayan wool pile

custom sizes
and colors available

TIDAL

ARCHITECTURAL COLLECTION

The Tidal Collection is a visual investigation into the relationship between texture, shape and color. A sophisticated gradient effect was created through an entirely new coloring system, combining threads of Himalayan wool in alternating saturations to achieve the simple and light effect.

designed by
Germans Ermičs

custom sizes and colors available

CHROMA RADIATE STANDARD



250x250 cm
cotton weave, himalayan wool pile



OVERFLOW, ISLE, RETREAT STANDARD

LUNAR ADDICTION

ARCHITECTURAL COLLECTION

A constellation of deconstructed forms crash against one another and each rug is articulated by a series of contrasts: complex patterns against visual regularity; flat surfaces alongside three-dimensional components; rough versus smooth textures.

designed by
Studiopepe.

custom sizes and colors available

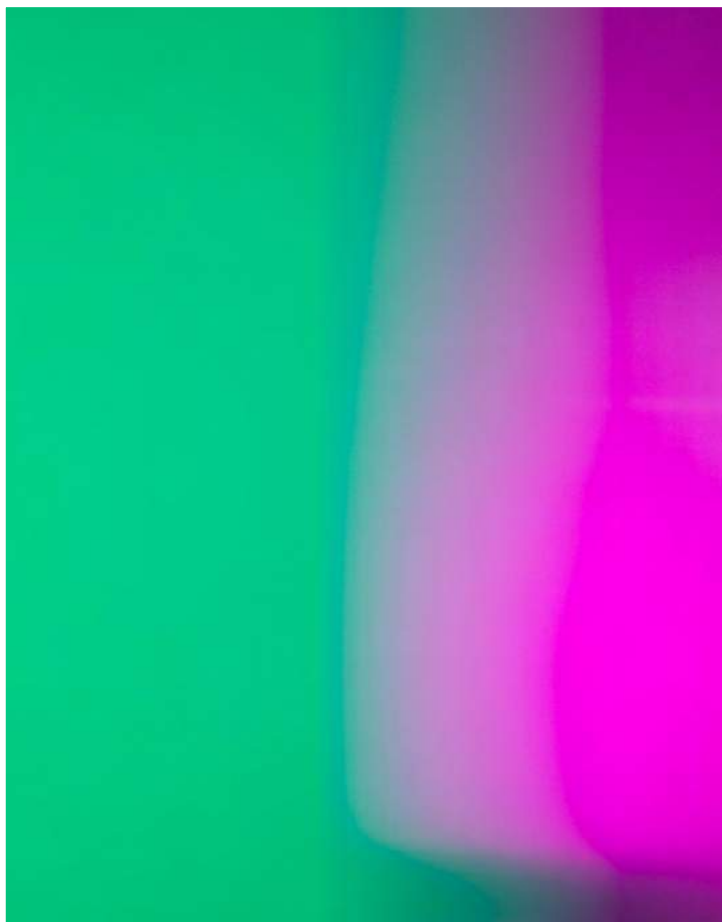
SQUARE STANDARD



250x250 cm
cotton weave, himalayan wool and linen pile



RECTANGLE STANDARD



STANDARD, ROUND

PARVATA

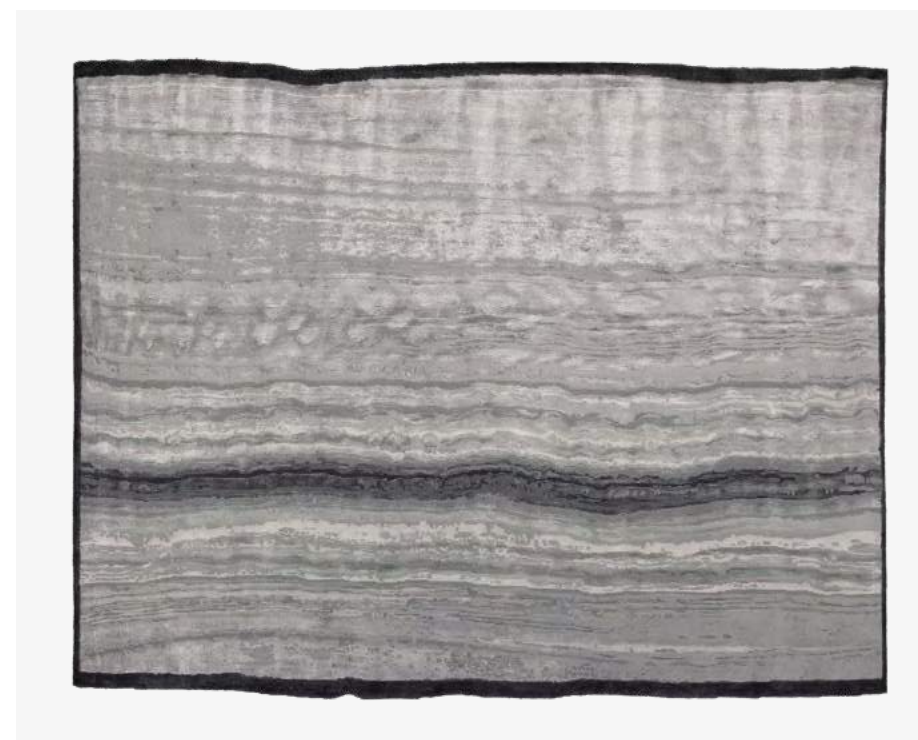
ARCHITECTURAL COLLECTION

A homage to the country it was created in, the name "Parvata" is the Nepali word for mountain and is produced by cc-tapis at the base of the Himalayas. A concept translated by the weavers to convey the natural wonders of Himalayan rock formations.

designed by
Jean-Marie Massaud

custom sizes available

STANDARD



230x300 cm
cotton weave, himalayan wool, bamboo silk and linen pile

STANDARD



170x240, 230x300 cm
cotton weave, himalayan wool pile

CHAND

CONTEMPORARY COLLECTION

The Chand rug is inspired by the unusual story of Indian sculptor Nek Chand, a government official of Chandigarh, who in 1957 secretly started to build a garden in his spare time, in a national park where construction was forbidden. To do so, he started collecting materials from demolition sites around the city to build hundreds of ceramic-covered concrete sculptures of dancers, musicians, and animals, which became the residents of the Rock Garden of Chandigarh. Only discovered by the authorities in 1975, it was scheduled for demolition but due to public outcry the park was inaugurated as an official public space shortly after and can still be visited today.

custom sizes and colors available



ENVOLÉE

SIGNATURE COLLECTION

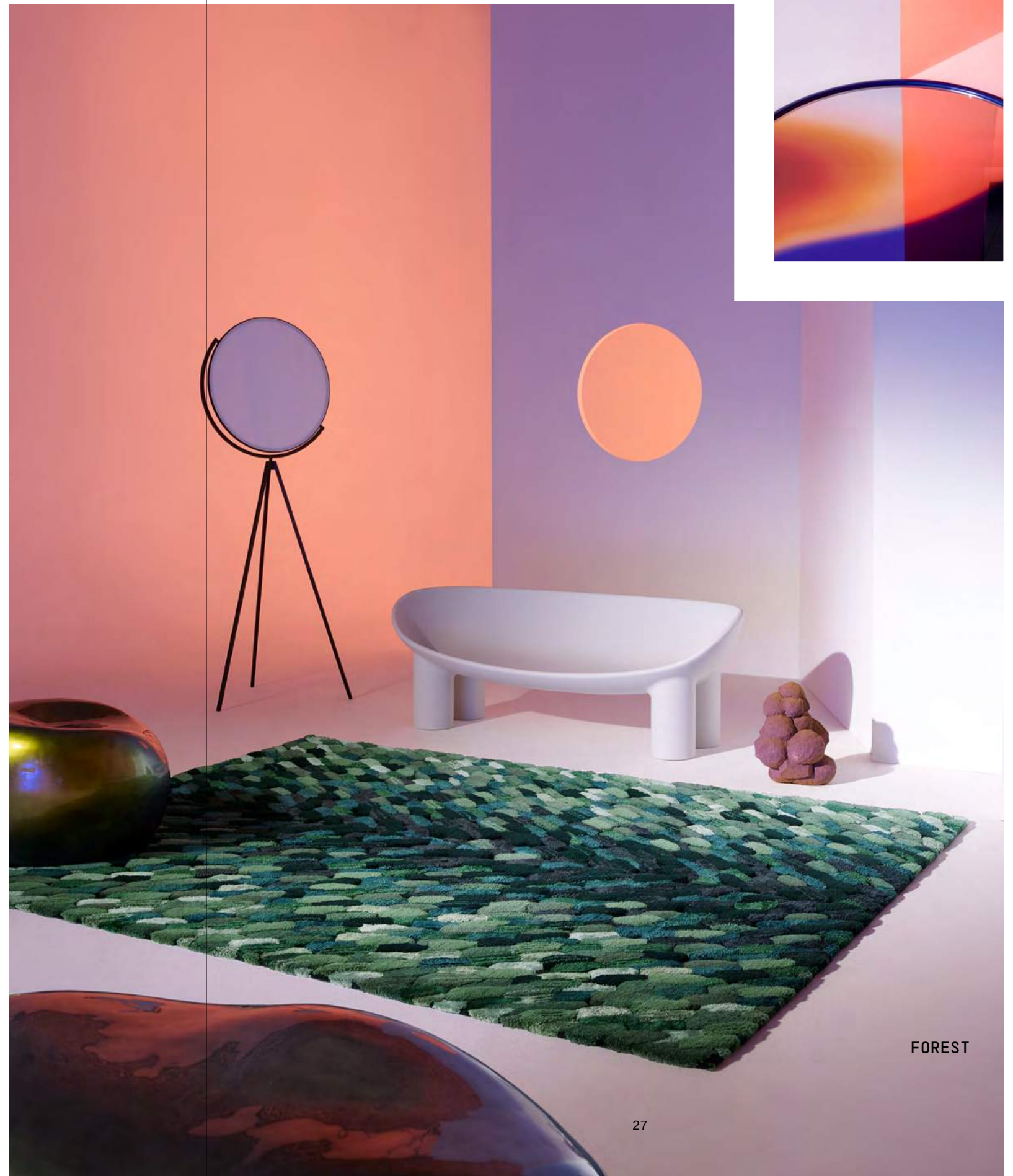
designed by
Cristina Celestino

custom sizes available

AMBER



170x240, 230x300 cm
cotton weave, himalayan wool and linen pile



FOREST

ASMARA

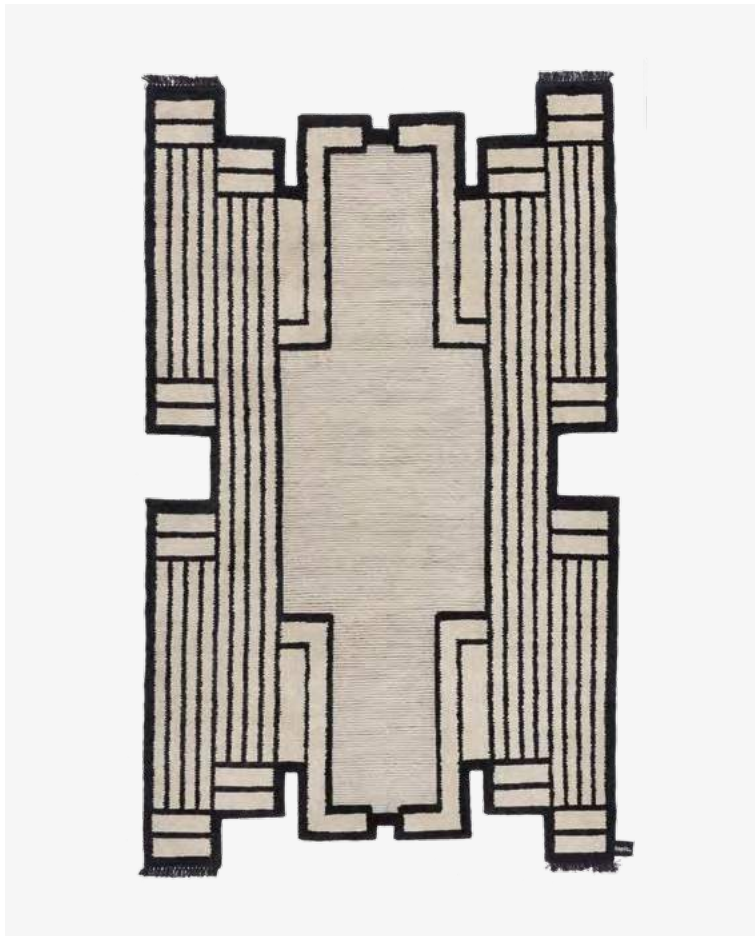
SIGNATURE COLLECTION

Named Asmara as a tribute to the capital of Eritrea, now recognized as a UNESCO World Heritage Site thanks to its modernist architecture, designed by visionary architects in the fascist colonial era. An urbanistic, innovative utopia applied to an African context, just like the two souls of this rug, one linear and modernist and the other warm, soft and textured.

designed by
Federico Pepe

custom sizes and colors available

STANDARD

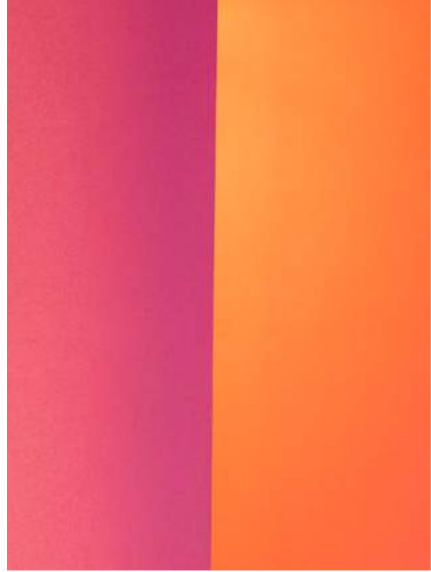


180x300 cm
cotton weave, himalayan wool pile



SUPER FAKE

SIGNATURE COLLECTION



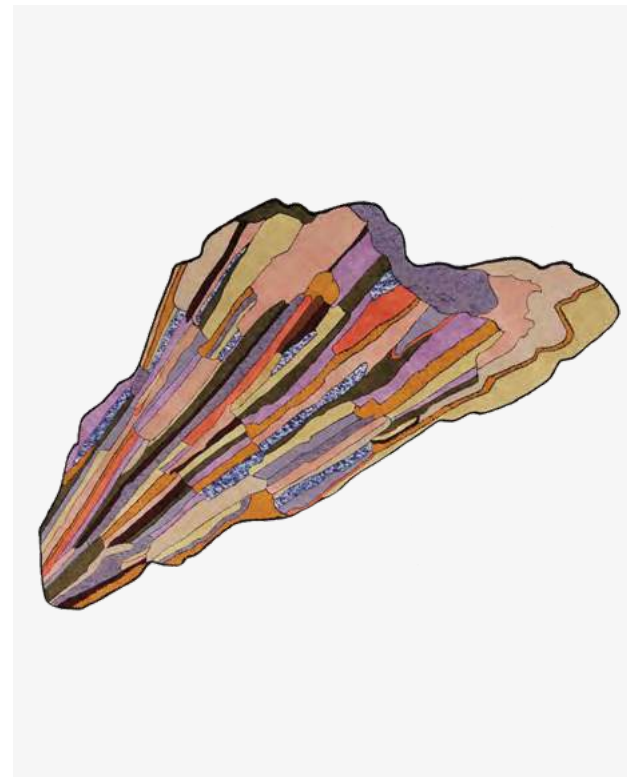
designed by
Bethan Laura Wood

A series of rugs inspired by the collision of the man-made with nature. Each based on a different rock form, whose surface patterns are created through the organic build-up of sediment through time and a combination of materials under pressure. Bethan uses the rock as a reference to explore the post instagram and 'snap chat world', where the fleeting two-dimensional image, collide with a physical and tactile reality, the hyper -, and super -, fake spill into our daily lives.



SUPER ROUND HOT

250x250 cm
cotton weave, himalayan wool,
silk and linen pile



SUPER ROCK HOT

250x250 cm
cotton weave, himalayan wool, silk and linen pile

custom sizes available
for round only



TRIPLE SLINKIE PINK



223x300 cm
cotton weave, himalayan wool pile

SLINKIE

SIGNATURE COLLECTION

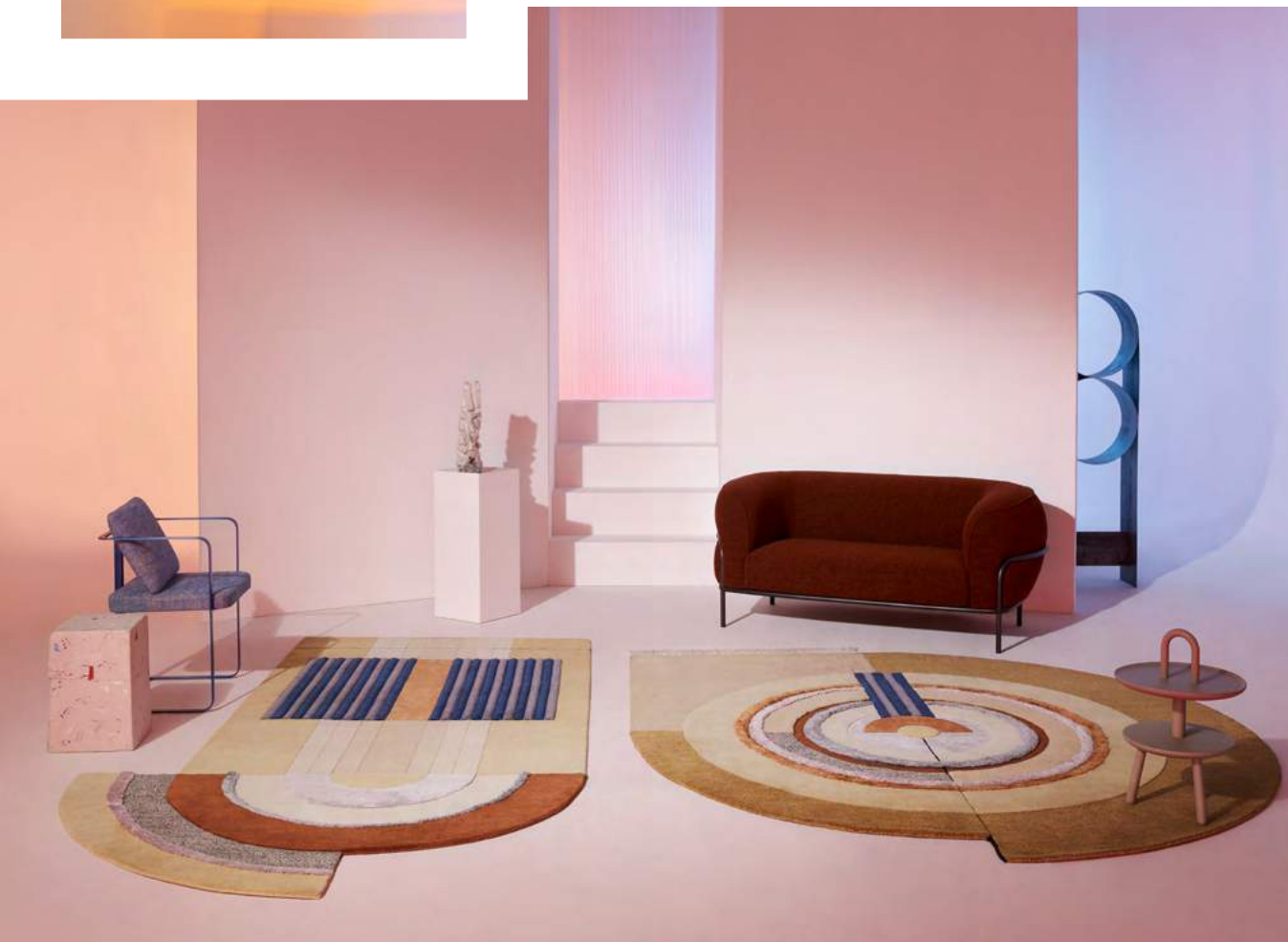
A design story revolving around color; a succession of chromatic evolutions developed in a composite universe of organic shapes. A digital drawing which allows every rug to display an evolution of colorful wool -sometimes unexpectedly- placed side by side, outlining multiple chromatic associations. A visual exercise aimed to transform the intangible idea of shade and hue into a finely produced and sophisticated product.

designed by
Patricia Urquiola

custom sizes available

BLISS

SIGNATURE COLLECTION



designed by
Mae Engelgeer

Designed by Dutch textile designer Mae Engelgeer, the start of the Bliss Collection came from experimenting with color and rounded shapes. Mae tried to keep the playfulness of the Memphis movement in mind whilst mixing elements like pattern and form with different production techniques. Using high quality materials like Himalayan wool with pure silk makes part of the design literally glow, she refers to it as "jewellery" for interior spaces.



ULTIMATE STANDARD

233x250 cm
cotton weave, himalayan wool
and silk pile



BIG ULTIMATE

170x300 cm
cotton weave, himalayan wool and silk pile

custom sizes available

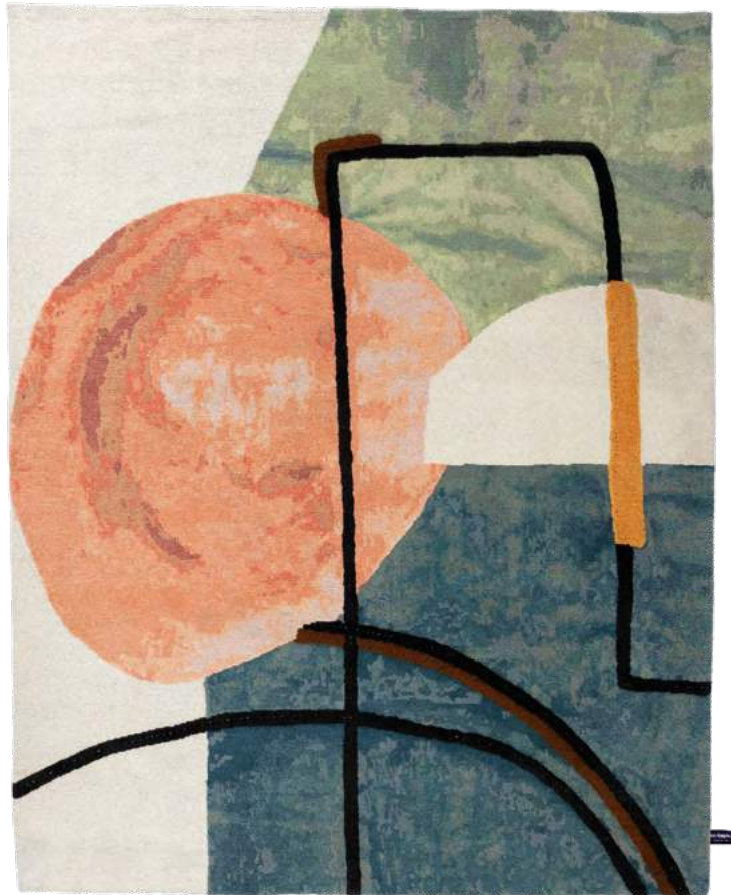
DOODLE

SIGNATURE COLLECTION

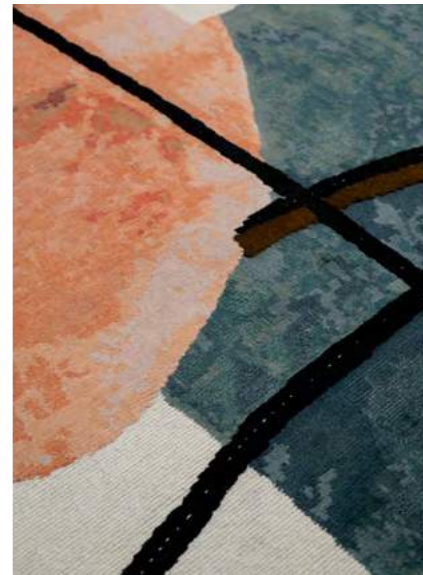
designed by
Faye Toogood

custom sizes available

INTERIOR WITH TABLE STANDARD



170x240, 230x300 cm
cotton weave, himalayan wool pile



AFTER PARTY

SIGNATURE COLLECTION

Exploring contemporary and traditional graphics and texture, the haphazard nature of the design was inspired by the world of celebration, confetti and life's fleeting moments. Creating a subtle and abstract graphic where the apparent randomness of the design has been translated by Tibetan artisans with over 152.000 individual knots per square meter. A randomness which has been custom made and born through experimentation.

designed by
Garth Roberts

custom sizes available

NATURAL WHITE



170x240, 230x300 cm
cotton weave, himalayan wool and silk pile



BROWN

SEGNU MINIMI

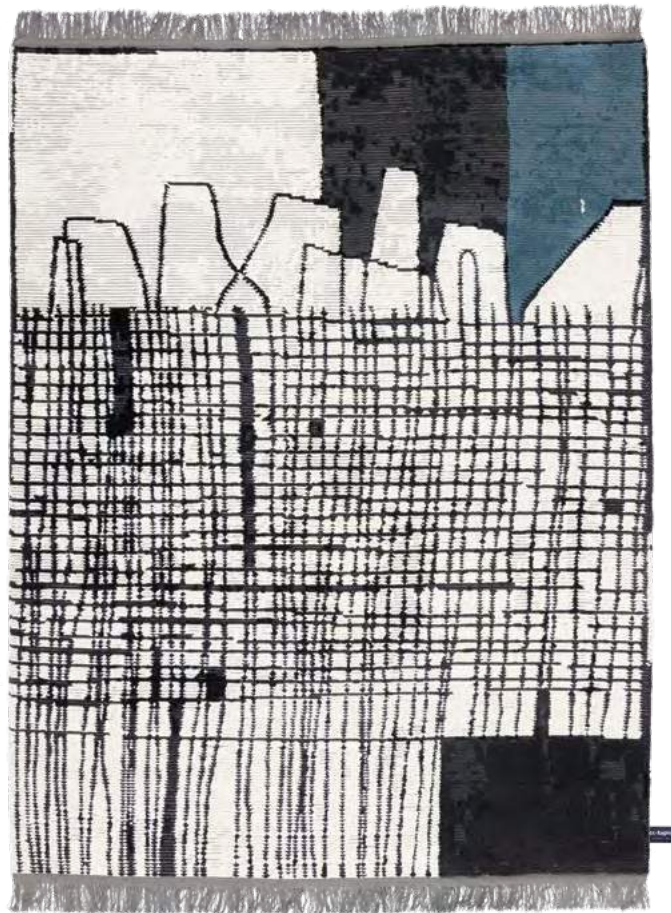
OLDIE COLLECTION

Segni Minimi, which translated means "simple marks", was originally a collection of drawings on paper by architect Giuseppe Di Costanzo. Essential, abstract and geometric designs where lines, figures and fields of color overlay each other.

designed by
Giuseppe Di Costanzo

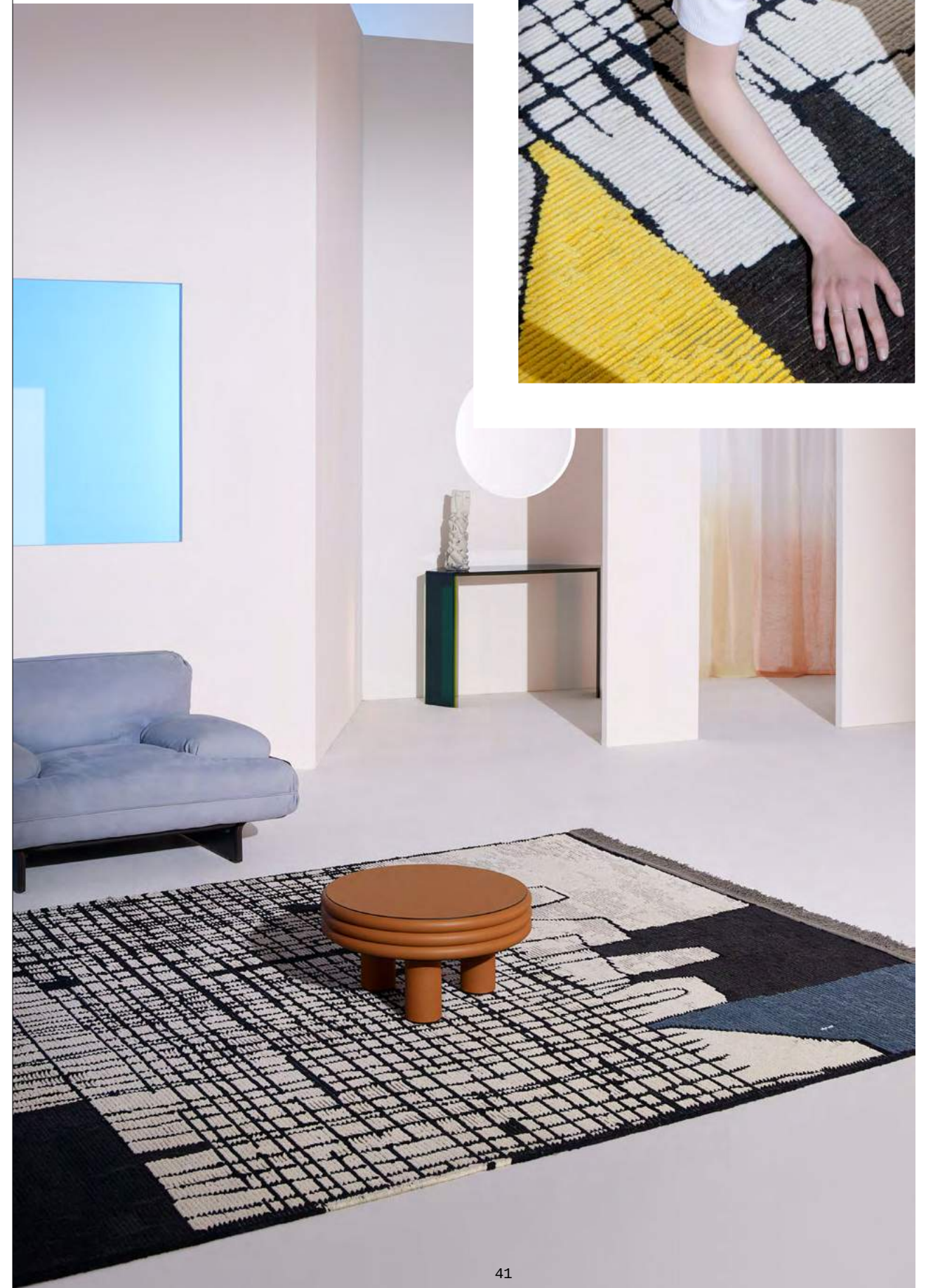
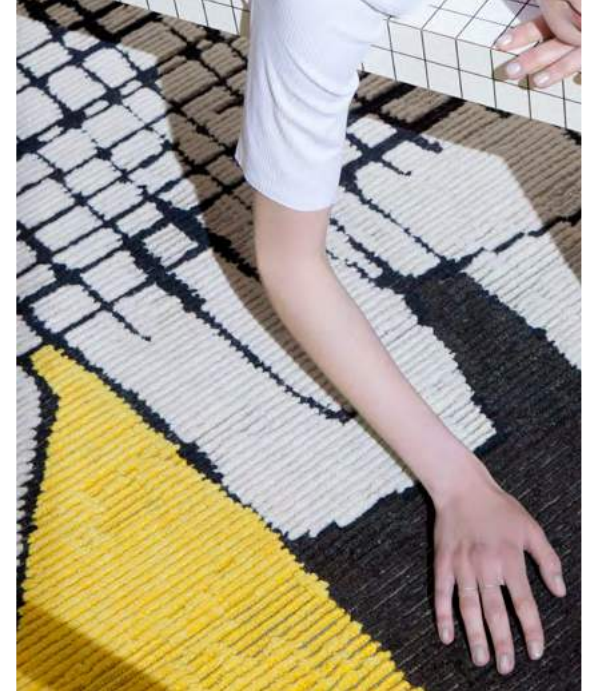
custom sizes and colors available

PETROL



170x240, 230x300 cm
cotton weave, himalayan wool pile

YELLOW





NATURAL WHITE



170x240, 230x300 cm
cotton weave, himalayan wool and silk pile

OLDIE SOIE

OLDIE COLLECTION

Thick and natural silk is knotted into the woolen pile of the rug at random. The Oldie Soie still has a beautiful worn-down aesthetic which is rich and tactile to the touch, but with the addition of the silk it also has a slight and elegant shine.

custom sizes and colors available

DIPPED ANGLE

DIPPED COLLECTION

Dynamic in design and in its use of materials. Subtle geometric shards of natural materials are juxtaposed with soft pastel-colors creating movement and balance. Simple in aesthetic but complex in touch, the dipped angle is a sophisticated blend of design and research.

custom sizes and colors available

BLACK-CIPRIA



170x240, 230x300 cm
cotton weave, himalayan wool, silk and aloe pile

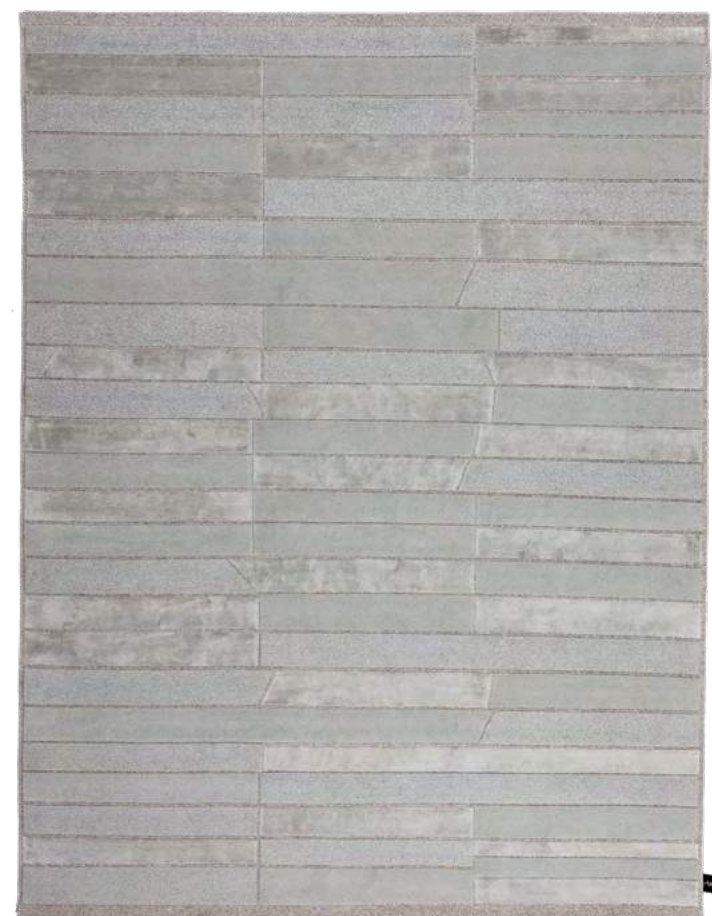


GREEN-CIPRIA



ANTRACITE

MOONLIGHT



170x240, 230x300 cm
cotton weave, himalayan wool and silk pile

CASELLARIO MONOCROMO 2.0

ARCHITECTURAL COLLECTION

designed by
A. Parisotto
+ M. Formenton

custom sizes and colors available



DUSK

METROQUADRO COLLECTION

More than a simple gradient, the contemporary shape is accentuated by the combination of materials, shards of silk contrast with the strong gradient of Himalayan wool, highlighting the dynamic and diagonal frame of the rug.

custom sizes and colors available

ANTRACITE



170x240, 230x300 cm
cotton weave, himalayan wool and bamboo silk pile



GOLD

HAZE

METROQUADRO COLLECTION

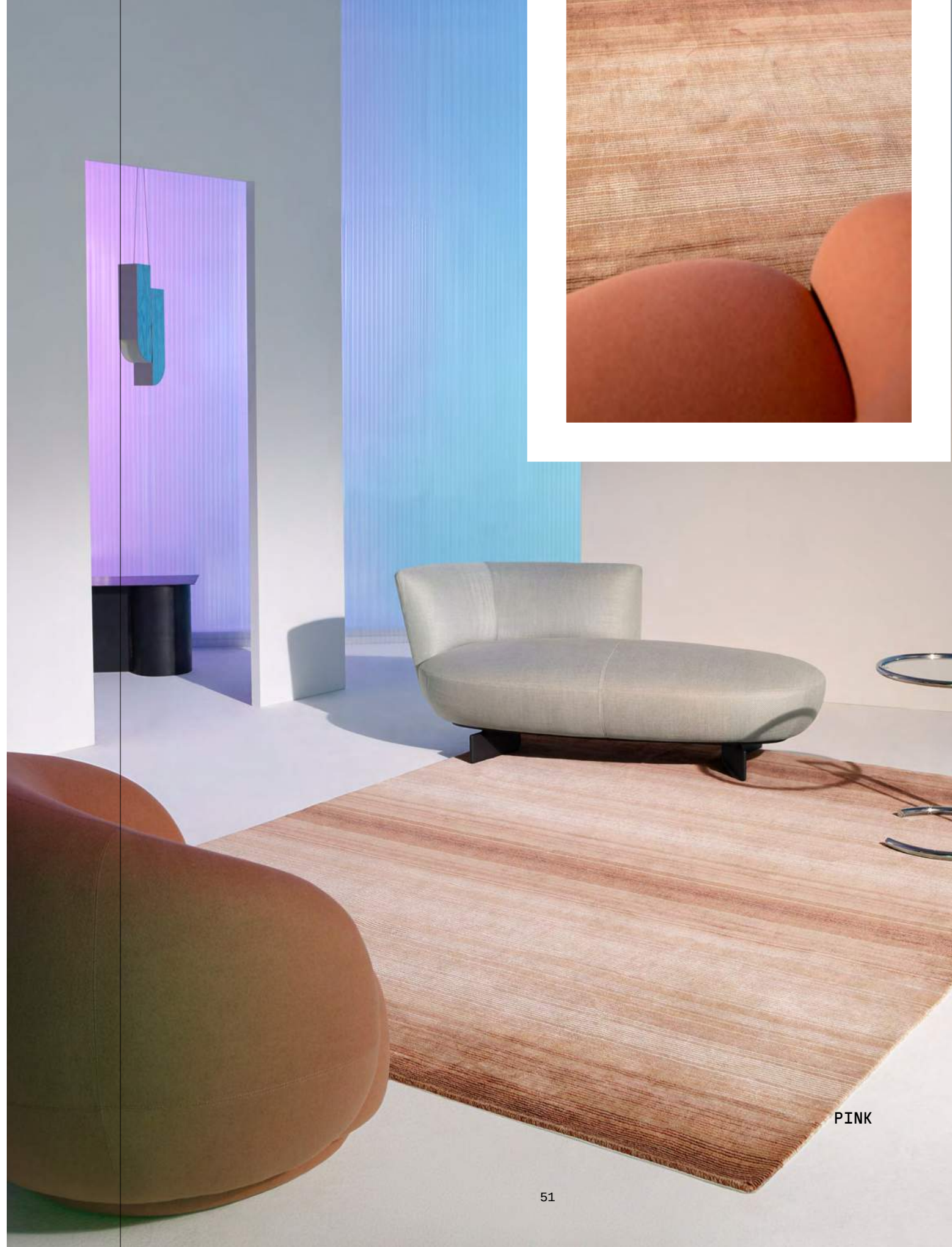
A design comprised of delicate lines which create a slow and undulating visual movement. Whether with subtle or bold colors, the design always maintains a soft and beautiful appearance, hence the name Haze.

custom sizes and colors available

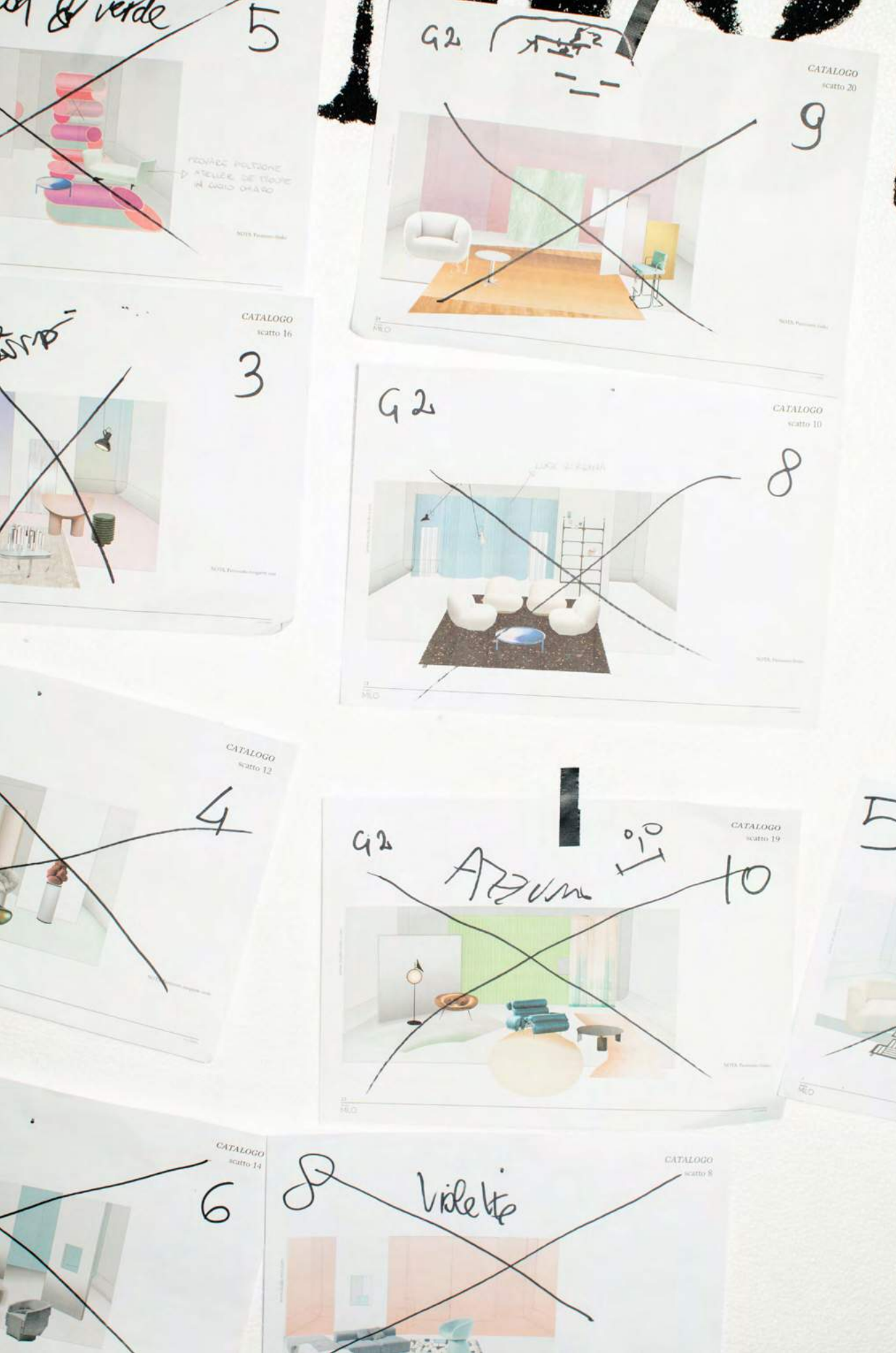
ARCOBALENO



170x240, 230x300 cm
cotton weave, himalayan wool and bamboo silk pile



PINK



all cc-tapis
handknotted rugs
are completely created
in nepal.
far from mass
production,
the brand aims
to offer
a tailored service
to those
who understand
and enjoy a high-end
product, where
a 3 month production
time contains
a story of ageless
culture.

BEYOND
CC-TAPIS



BESPOKE

Producing our rugs exclusively by hand means that we are able to customize every rug. We can adapt the dimensions, give many of our models new colors, or work with you on a completely new design. There are endless possibilities to create a unique carpet using more than 1200 different colors and materials like wool, silk, linen or aloe, which can be combined to create different textures and varying pile heights. Between 8 and 24 weeks may be needed to produce our handknotted rugs, depending on the size, the knot-count and the complexity of the design. Upon request we may also produce a sample of the desired rug.



PRODUCTION

What is a handknotted rug? It is a rug where every individual knot is made by hand, which is quite a task if you can imagine that a cc-tapis rug can have up to 232.000 Tibetan knots per square meter. No machines are ever used in the entire process and all rugs are produced the way they were produced a century ago. A strong respect for the materials and for the culture of this ancient craft is reflected in the company's eco-friendly approach to every step of production, ranging from the hand-spinning of the softest Himalayan wool to the use of purified rainwater for the washing of the final products, making each one of cc-tapis rugs unique.





MATERIALS

Himalayan wool

Himalayan wool comes from Tibetan Highland sheep, a robust and durable wool which is rich in natural lanolin. Lanolin gives the wool its strength and protects the sheep from the harsh weather in the Himalayas making the rugs naturally stain resistant.

Dyed Himalayan wool maintains an incredible depth to the color never becoming flat.

Pure silk

cc-tapis uses pure silk, made by the silk worm which is imported directly from China. An extremely fine material with a beautiful and natural shine.

Bamboo silk

A fibre created from bamboo cellulose. It is a natural and sustainable material with a thick and smooth texture. It has a beautiful shine very similar to pure silk. We recommend it for projects where clients would like full silky rugs with a thick, lustrous and high-pile.

Linen

Linen is a natural material made from fibers of the flax plant. It is a rich and thick material which has a beautiful and subtle shine.

Aloe

Aloe is a local nepali word for a type of nettle plant which grows abundantly in Nepal. A material that once it has been hand-carded and hand-spun is strong and extremely durable. It has a harder texture than wool and due to this hardness we recommend it for contract applications or high-traffic areas such as shops or hotels. It sheds much less than wool and can be fully dyed with the exception of light cold colors.



the transition
between classical
architecture
and contemporary
art in villa panza
embraces the
cultural universe
of cc-tapis.

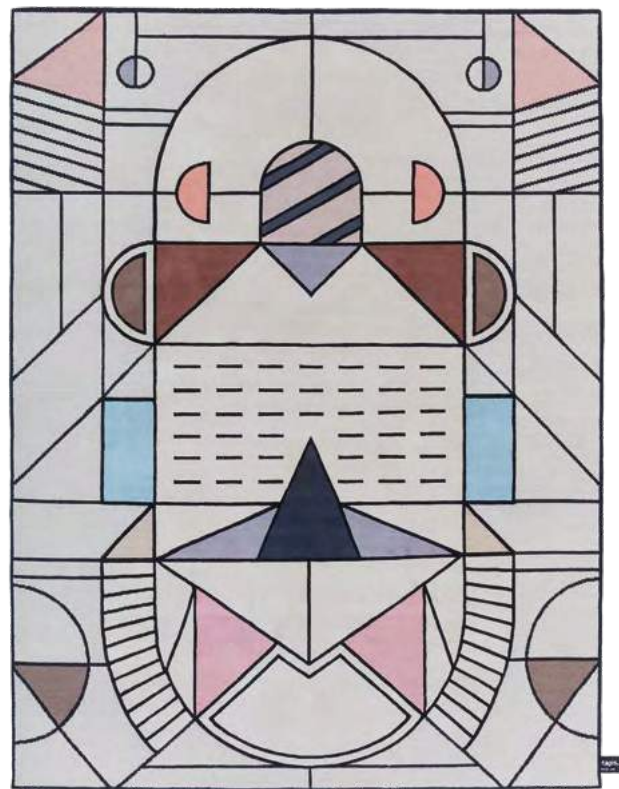
DAYDREAMING

FLATLANDIA

SIGNATURE COLLECTION

designed by
Elena Salmistraro

The rugs are transformed into two-dimensional universes inhabited by geometric shapes, just like in the novel Flatland, the fantastic story in multiple dimensions, written by Reverend Edwin A. Abbott in 1884. Triangles, lines, circles and squares overlap, meet and collide becoming conscious of each other, just as they do in the novel, unaware of the colors and the magic they hold. All the elements and the colors typical of these artifacts are represented in a stylized and geometric way, becoming a symbolic representation.



CARTESIO OUTLINE STANDARD
170x240, 230x300 cm
cotton weave, himalayan wool pile
custom sizes available



CARTESIO STANDARD

TALISMAN

WALLHANGING COLLECTION

designed by
Studiopepe.

Luminous wall-hangings which are the conceptual continuation of the research started with the Hello Sonia! Collection. Colorful mirrors, matte steel inserts and light elements, frame a hand-knotted mohair rug with personalized fringes in a composition with a soft and clean geometry.



PINK

65x127 cm
cotton weave, himalayan wool pile, mirror,
LED and steel

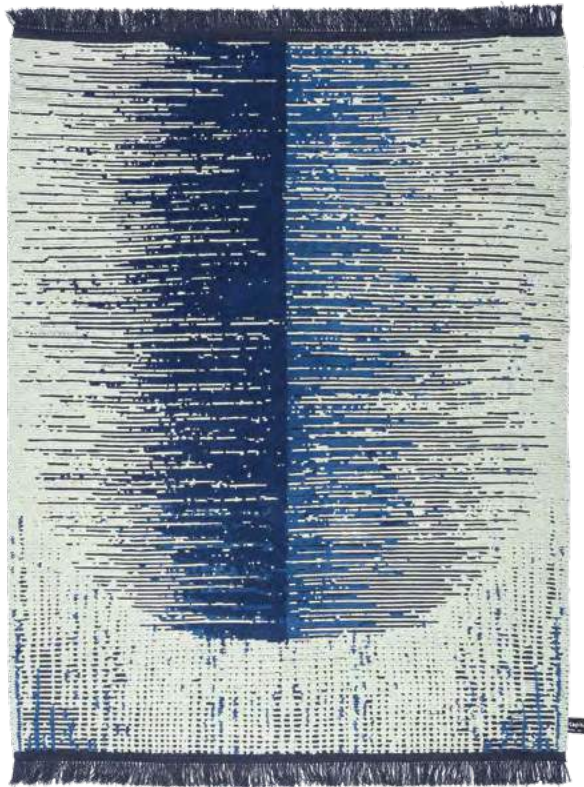


NEW JAPAN

OLDIE COLLECTION

designed by
Chiara Andreatti

Chiara Andreatti draws her inspiration from Japanese Ikat fabrics from the early 19th century. A rug characterized by a nocturnal color palette of various shades of indigo - spanning from a soft blue, to an ultramarine, to an almost black blue - mixed with the sandy tones of raw Himalayan wool.



STANDARD

170x240, 230x300 cm
cotton weave, himalayan wool pile
custom sizes and colors available



CUT OUT MONOCROMO LINEN

ARCHITECTURAL COLLECTION

designed by
A. Parisotto
+ M. Formenton

Fascinated by the sculptures of Isamu Noguchi, Parisotto + Formenton investigate the geometry and the joints between fluid forms. A rug that plays with the juxtaposition of different materials in the same chromatic tones. Glossy and opaque effects are given-off from the mixture of materials. Each reacting differently under the same light. A reaction that makes the perception of monochromatic contrast possible.



NATURAL WHITE

170x240, 230x300 cm
cotton weave, himalayan wool and linen pile
custom sizes and colors available



CINQUECENTO

NEW CLASSIC COLLECTION

designed by
Studio Klass

The 'Cinquecento' Collection celebrates the use of perspective during the Italian Renaissance period. The geometric and colored areas are selected and developed into an artwork made of lines and forms, inspired by masterpieces of that period such as Domenico Veneziano, Ludovico Mazzolino and Giovanni Bellini.



VENEZIANO STANDARD
170x240, 230x300 cm
cotton weave, himalayan wool and silk pile
custom sizes available



MAZZOLINO STANDARD
170x240, 230x300 cm
cotton weave, himalayan wool and silk pile
custom sizes available



NASTAGIO STANDARD



ROVERELLA STANDARD
170x240, 230x300 cm
cotton weave, himalayan wool and silk pile
custom sizes available



NASTAGIO STANDARD
170x240, 230x300 cm
cotton weave, himalayan wool and silk pile
custom sizes available



NASTAGIO STANDARD

NEW FORÊT

NEW CLASSIC COLLECTION



STANDARD
170x240, 230x300 cm
cotton weave, himalayan wool and silk pile
custom sizes and colors available



HELLO SONIA!

METROQUADRO COLLECTION

designed by
Studiopepe.

A Collection of rugs which have been loosely inspired by the compositions of Sonia Delaunay and an aesthetic of the 1920's. The design is created through a combination of Himalayan wool and vegetal-silk.



FOREST

170x240, 230x300 cm
cotton weave, himalayan wool and bamboo silk pile
custom sizes and colors available

FLAMINGO



GINGER

HELLO SONIA! RELOADED

METROQUADRO COLLECTION

designed by
Studiopepe.



BLACK
170x240, 230x300 cm
cotton weave, himalayan wool and bamboo silk pile
custom sizes and colors available

GINGER



MILAN AFTER

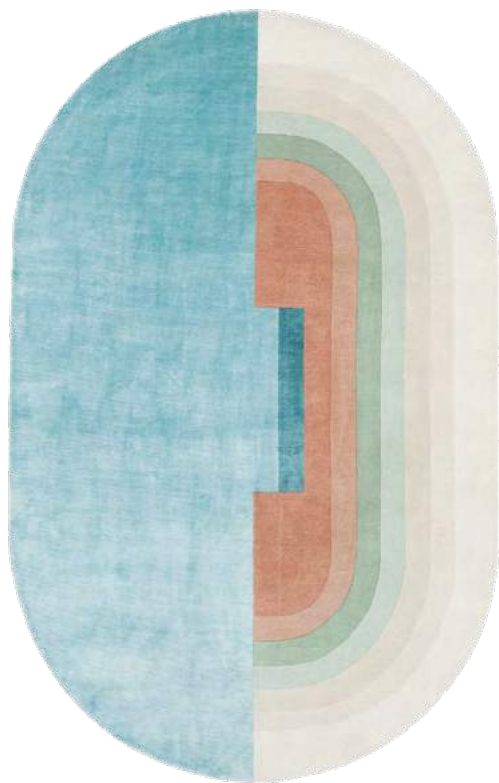
a voyeuristic glance
into a milanese
apartment. ornate
and classic detail
is combined with
contemporary style.
take your time, look
around, it might not be
permitted, but that's
half the fun.

GIUDECCA

SIGNATURE COLLECTION

designed by
Zanellato/Bortotto

From a photo of a flight of stairs in Venice, came the idea to reinterpret the iconic image of the steps covered in water by the lagoon. The different tones of gray of the wool create the stone steps, marked by salt and the effects of time. The sea and the vibrations of the waves are transformed into a shimmering silk surface where tones of blue and green radiate together.



STANDARD

150x240 cm
cotton weave, himalayan wool and silk pile
custom sizes and colors available



PRIMITIVE WEAVE

SIGNATURE COLLECTION

designed by
Chiara Andreatti

A Collection inspired by Moroccan Berber rugs, infused with the rigorous Viennese geometric graphics from the 20th century. A mixture of Nepalese flatweave and different pile heights, the effortless combination of cultures and knotting techniques make these rugs rich in texture and aesthetics. Rugs that are as unique as they are beautiful.



1 CIPRIA

170x240, 230x300 cm
cotton weave, himalayan wool pile
custom sizes and colors available



4 RUST

HELLO SONIA! WALLHANGING

WALLHANGING COLLECTION

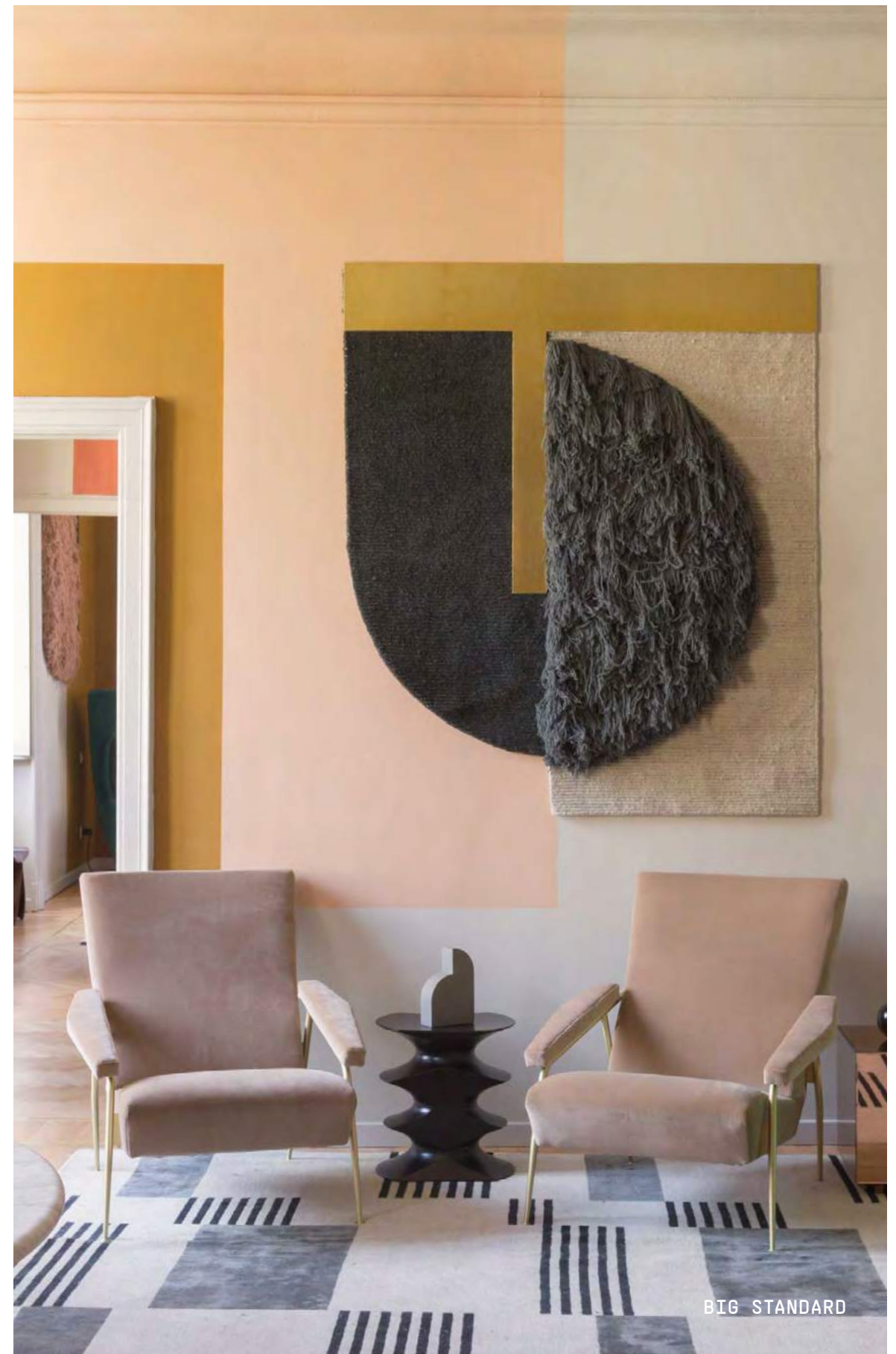
designed by
Studiopepe.

The combination of graphics, geometry and color are enriched with flatweave, long shaggy pile and brass inserts, creating a language inspired by the twenties. In the place of words, a combination of wool and metal are harmoniously paired to create a type of visual poetry.



BIG PALLADIO

140x160 cm
cotton weave, himalayan wool pile and brass
custom sizes and colors available



ECAILLES DEGRADÉ 2.0

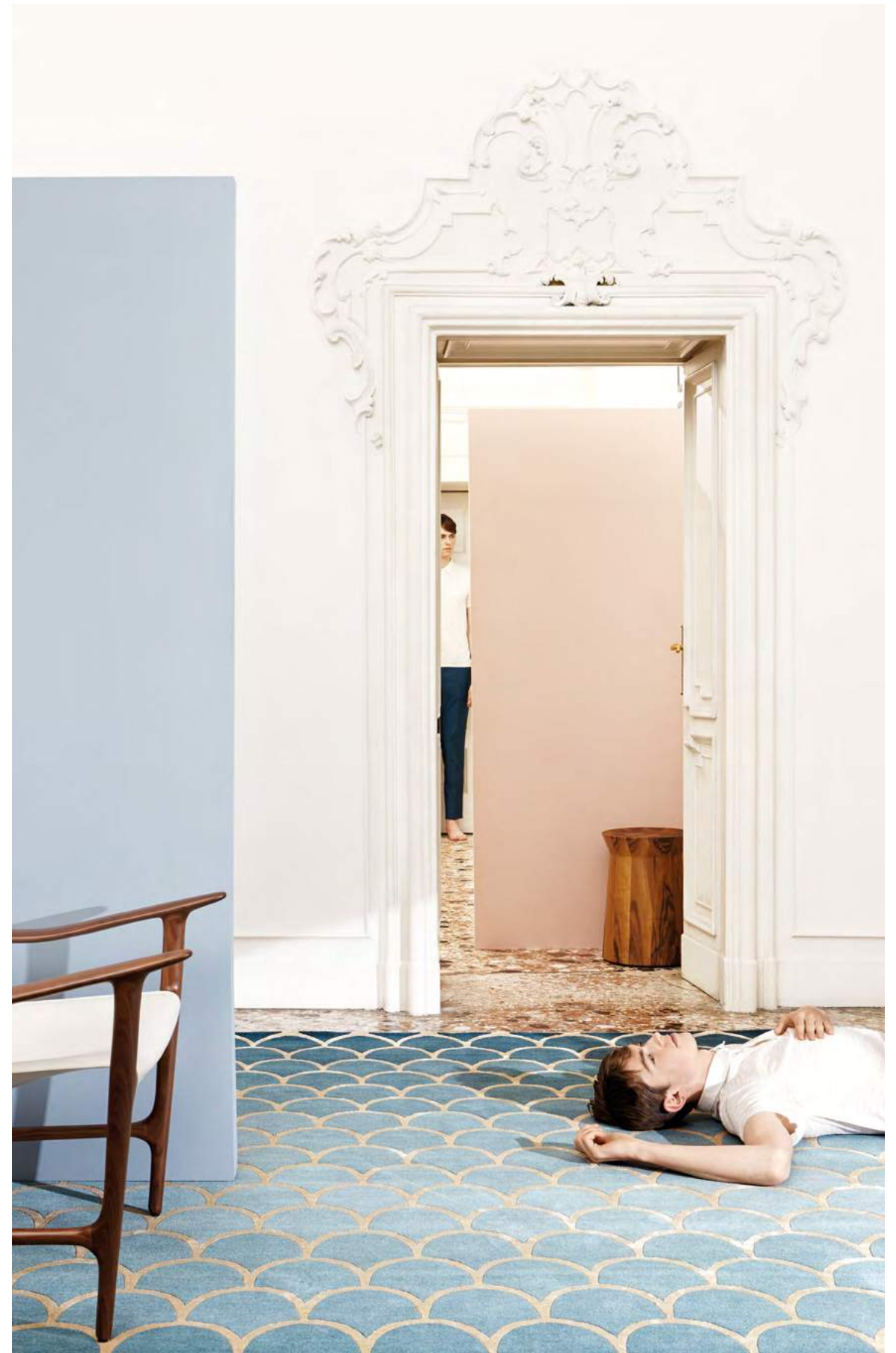
CONTEMPORARY COLLECTION

A classic pattern revisited. Pure silk is used to create a graphic-outline whilst Himalayan wool is cleverly and meticulously dyed to create a soft dégradé effect.



TEAL

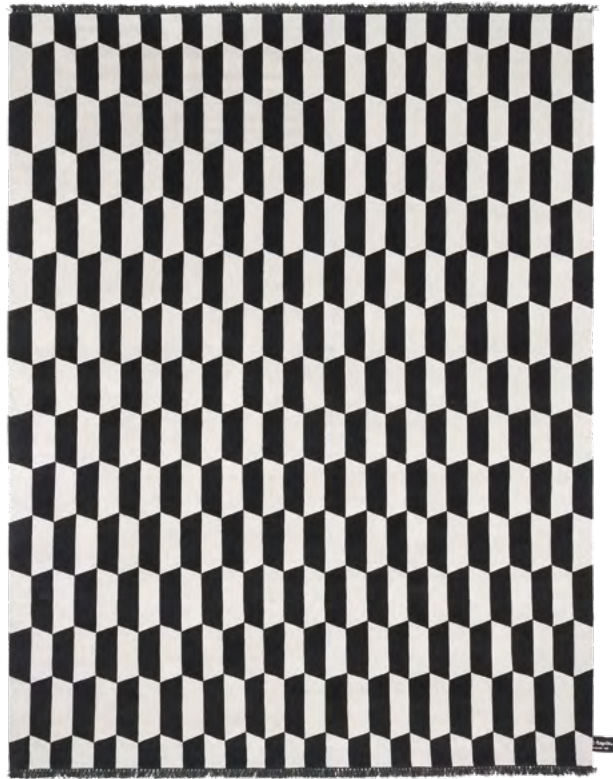
170x240, 230x300 cm
cotton weave, himalayan wool and silk pile
custom sizes and colors available



P.A.N.E. / P.A.N.E. SOIE

CONTEMPORARY COLLECTION

A geometric design inspired by traditional Italian stone flooring originally made in marble. The bold and contrasting design is re-created either in 100% pure Himalayan wool or the pattern is created with alternating parts of wool and pure silk.



P.A.N.E. STANDARD
170x240, 230x300 cm
cotton weave, himalayan wool pile
custom sizes and colors available

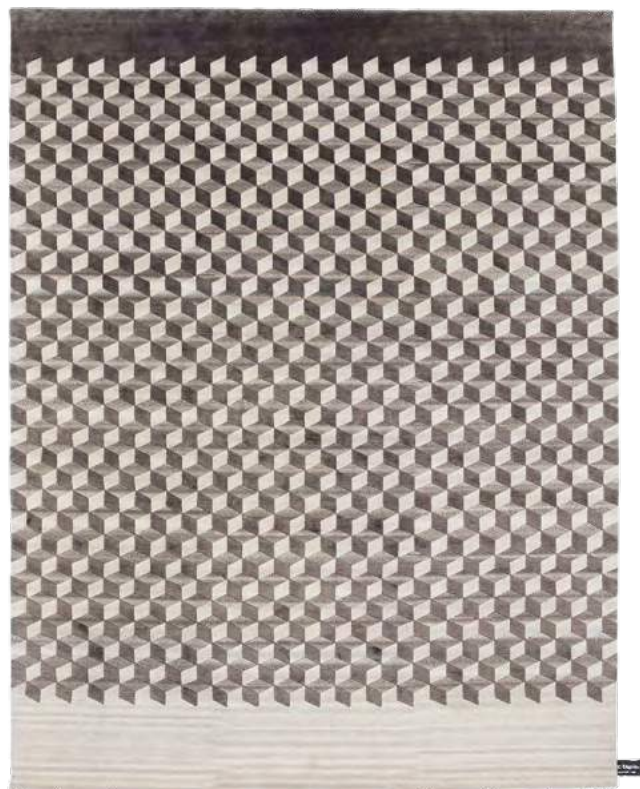
P.A.N.E. SOIE BRONZE



MINI INFINI / MINI INFINI SOIE

CONTEMPORARY COLLECTION

Inspired by paving stones in the historic city of Pompeii in southern Italy, the ancient design is given a contemporary twist, where natural materials increase the three-dimensionality of the piece.



MINI INFINI SOIE SLEEK

170x240, 230x300 cm
cotton weave, himalayan wool and silk pile
custom sizes and colors available

MINI INFINI SOIE SLEEK



MINI INFINI CIPRIA



OLDIE

OLDIE COLLECTION

Beauty in simplicity, thick undyed Himalayan wool is knotted onto a colorful cotton warp. The knots are cut at random by the artisans causing some knots to open whilst others remain closed. The color of the cotton is diffused through the natural and warm colors of the wool, more evident where the knots have remained closed and less visible where the knots are open. Creating a beautifully random and worn-down effect which gives the Collection its name.



LIGHT BLACK

170x240, 230x300 cm
cotton weave, himalayan wool pile
custom sizes and colors available

DARK ORANGE



FULL BLACK TAUPE

TRACES D'ORIENT

TRACES DE MEMOIRE COLLECTION

Inspired by antique Dutch Batik rugs, new contemporary colors are added with the signature 'worn-down' appearance of the Traces de Memoire Collection. Extreme workmanship allows for soft and fluid shapes, a mixture of pile heights and slight color nuances.



BLUE GOLD

170x240, 230x300 cm
cotton weave, himalayan wool and silk pile
custom sizes and colors available

STANDARD



TRACES D'AUBUSSON / TRACES D'AUBUSSON FULL

TRACES DE MEMOIRE COLLECTION

A traditional design with a beautiful 'worn-down' appearance, which is created completely naturally without any chemical or acid washes. A play of pile heights combined with the subtle nuances of contemporary color created by the natural materials gives new meaning to the word timeless.



TRACES D'AUBUSSON LIGHT PETROL

170x240, 230x300 cm

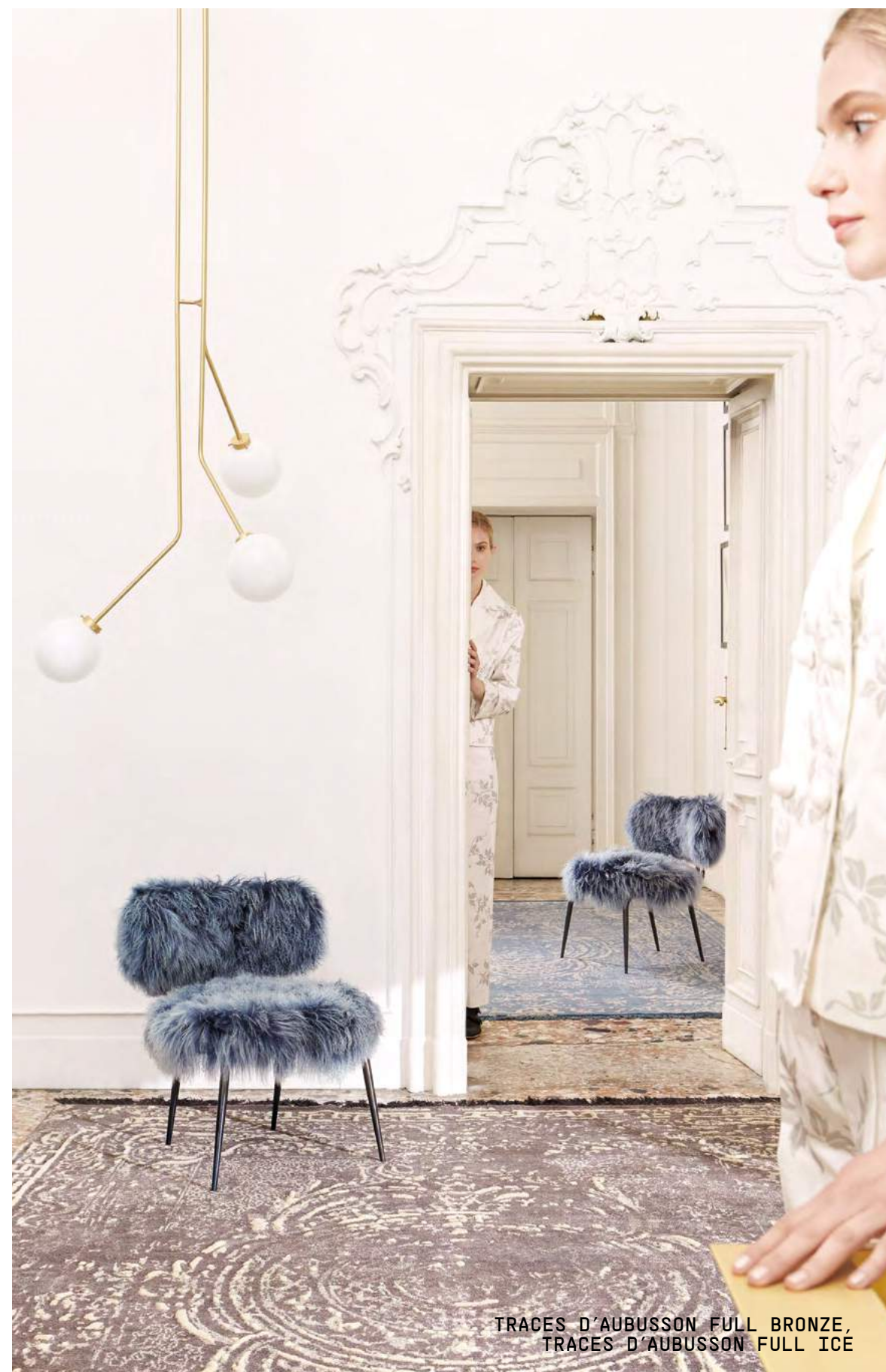
cotton weave, himalayan wool and silk pile
custom sizes and colors available



TRACES D'AUBUSSON FULL BLACK&WHITE

170x240, 230x300 cm

cotton weave, himalayan wool and silk pile
custom sizes and colors available



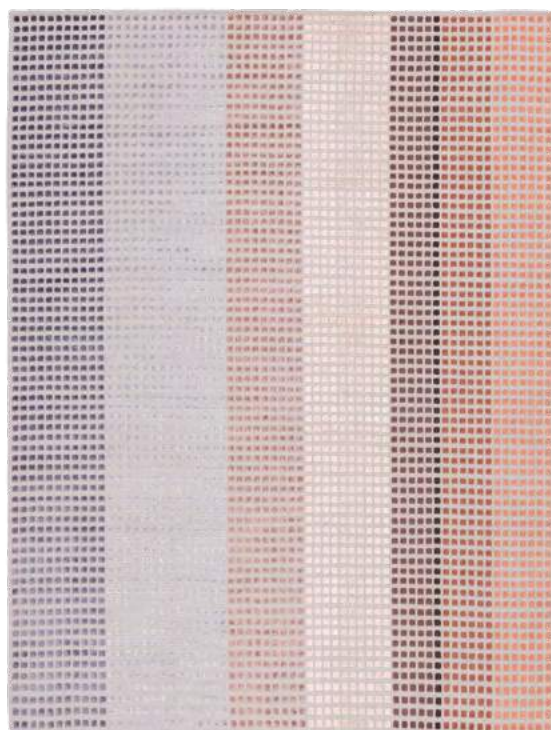
TRACES D'AUBUSSON FULL BRONZE,
TRACES D'AUBUSSON FULL ICÉ

ORIZZONTI

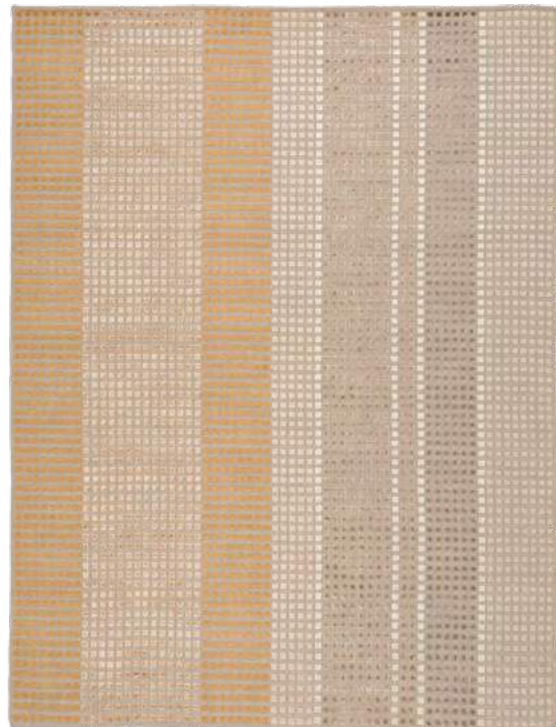
METROQUADRO COLLECTION

designed by
Eligo Studio

The Orizzonti rugs are inspired by nature. A design with various color combinations – Selva (forest), Tundra, Tramonto (sunset), Dune and Campo di Grano (field of wheat) – which all reference classic Italian tapestries which are reinterpreted through heavy pixellation in vegetal-silk and Himalayan wool.



DESERTO DI SALE STANDARD
170x240, 230x300 cm
cotton weave, himalayan wool
and bamboo silk pile
custom sizes available



DUNE STANDARD
170x240, 230x300 cm
cotton weave, himalayan wool and bamboo silk pile
custom sizes available



SELVA STANDARD

CAMPO

METROQUADRO COLLECTION

designed by
Leonardo Talarico

A design which plays with the idea of superimposed layers and was inspired from a bird's-eye view of wheat fields, hence the name Campo, which in Italian means field. A playful rug that combines a low flatweave, a high-pile and a clever design creating the effect that there are two rugs overlapping, but don't let your eyes deceive you: Campo is one single rug.



BLUE

170x240, 230x300 cm
cotton weave, linen and bamboo silk pile
custom sizes and colors available

STANDARD



FLAMINGO

cc-tapis

Piazza Santo Stefano, 10
20122 MILANO
T. +39 02 89093884
info@cc-tapis.com
cc-tapis.com

Spectrum
Photos by **Alessandro Oliva**
Art Direction by **Motel 409**
Set Design and Styling by **Studio MILO**
Copywriting by **Federico Sarica**

Highlights
Main photos by **Jeremias Morandell**
Cover & details photos by **Ivan Grianti**
Art Direction by **Motel 409**
Set Design and Styling by **Studio MILO**
Photos Spectrum installation
cc-tapis showroom by **Andrea Bartoluccio**

Daydreaming
Photos by **Beppe Brancato**
Styling by **Greta Cevenini**

Milan Affair
Photos by **Lorenzo Gironi**
Art Direction by **Motel 409** and **Studio MILO**

Dreams that money can buy
Photos by **Lorenzo Gironi**
Art Direction by **Motel 409**

Metroquadro Collection
Photos by **Silvia Rivoltella**
Styling by **Greta Cevenini**

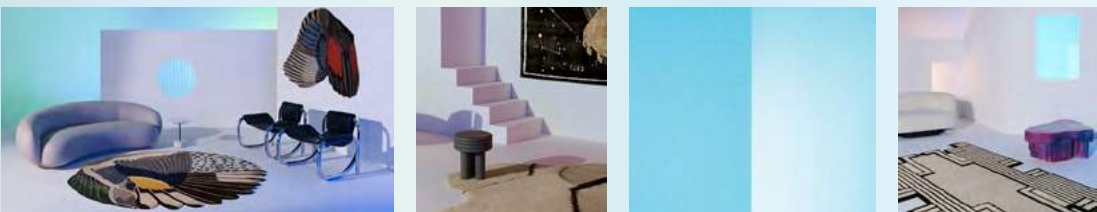
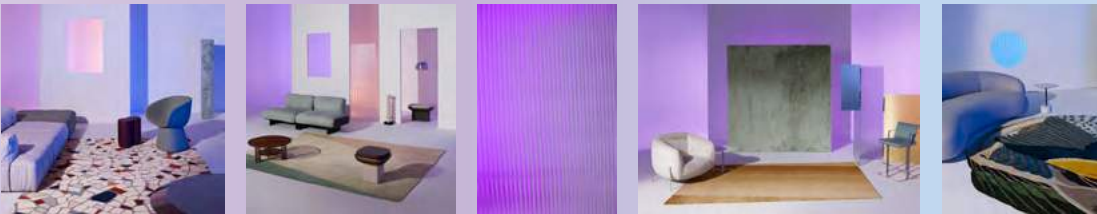
Special thanks to:

Agape
Alias
Arflex
Artemide
Astep
Atelier de Troupe
Azucena
Baxter
Bredaquaranta
Cara/Davide
Cassina
Driade
Duccio Maria Gambi
Fai - Fondo Ambiente Italiano
Flos
Gallotti&Radice
Giobagnara
Giorgetti
Glas Italia
Hagit Pincovici
Henry Timi
Imperfetto Lab
JCP
Lachance Paris
Marta Sala
Matter Made
Meridiani
Mingardo
Molteni&C
Moroso
Nahoor
Nemo Lighting
Nilufar
Officine Saffi
Poliform
Pulpo
Rossana Orlandi
Saba
Simone Fanciullacci
Spotti
Tacchini
Thonet
Tubes Radiatori
Verilin
Villa Panza
Vitra

©2019 cc-tapis. all rights reserved.
cc-tapis reserves the rights
at all time to apply modifications
for the functional or qualitative
improvement of its products.
the color and material samples have
an indicative value.

Graphic project by **MM Company**

Printed by **italgraf**





cc-tapis.

Piazza Santo Stefano, 10
20122 MILANO